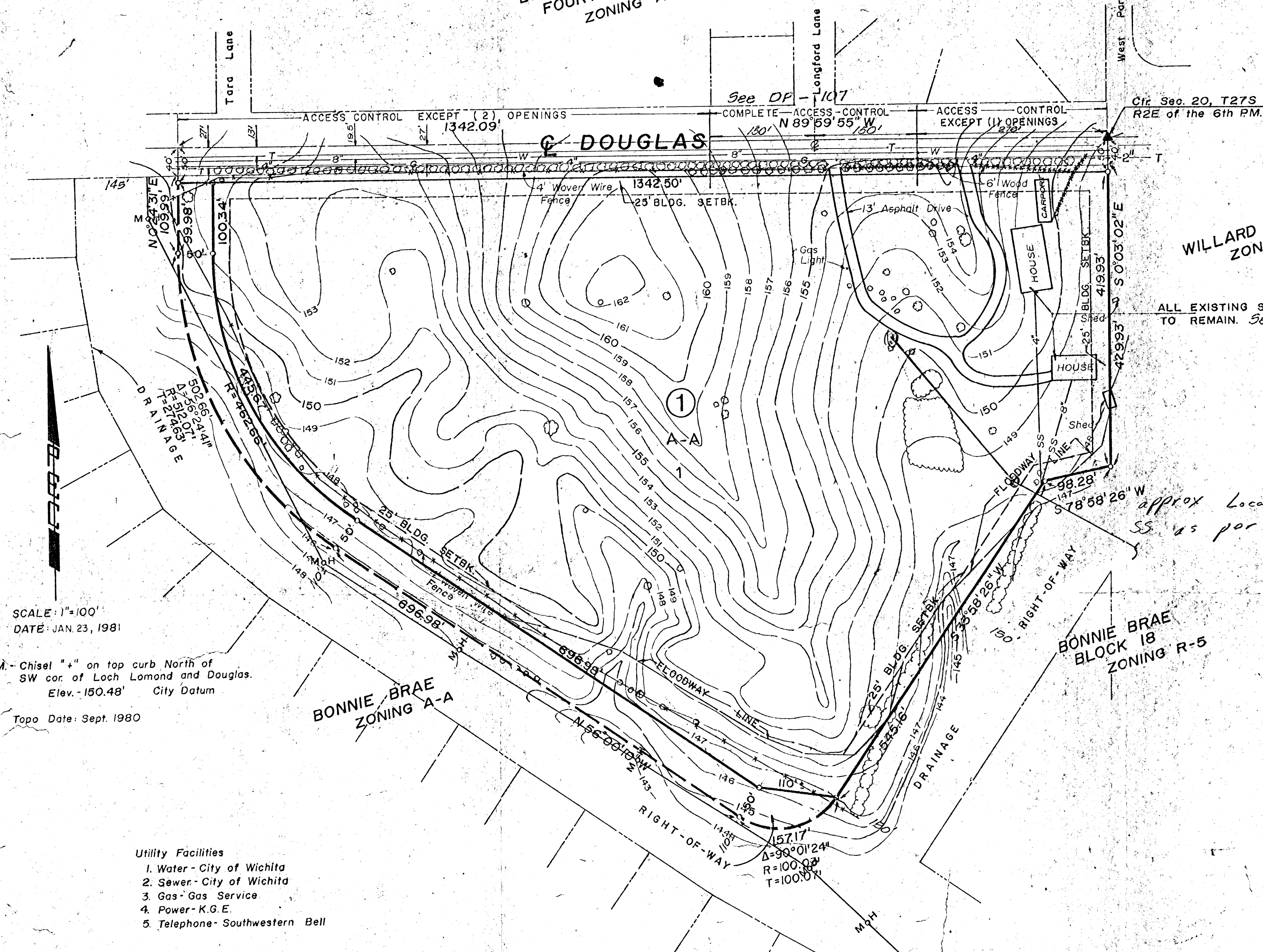


BROOKHOLLOW  
FOURTH. ADDITION  
ZONING A-A



SCALE: 1"=100'  
DATE: JAN 23, 1981

B.M. - Chisel "x" on top curb North of  
SW cor. of Loch Lamond and Douglas.  
Elev. - 150.48' City Datum  
Topo Date: Sept. 1980

- Utility Facilities
1. Water - City of Wichita
  2. Sewer - City of Wichita
  3. Gas - Gas Service
  4. Power - K.G.E.
  5. Telephone - Southwestern Bell

OWNER: Jean K. Garvey and Jean K.  
Garvey Revocable Trust  
8427 E. Douglas  
Wichita, Kansas  
67207

ENGINEER: Professional Engineering Consultants P.A.  
1440 E. English  
Wichita, Kansas  
67211

WILLARD GARVEY  
ZONING A-A

ALL EXISTING STRUCTURES  
TO REMAIN. See DP-107

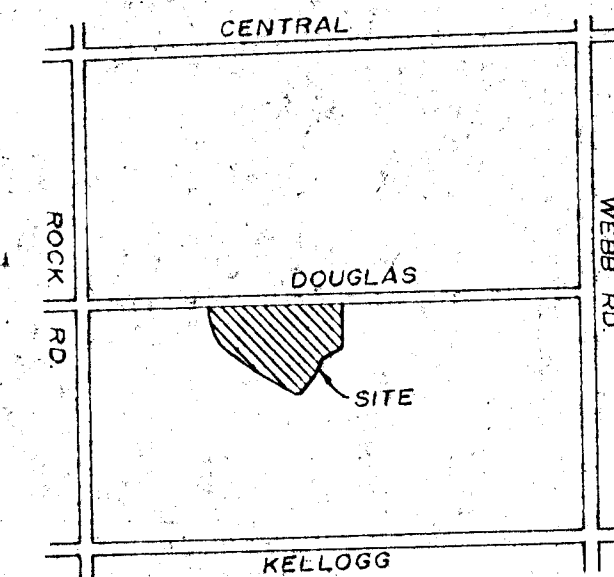
approx Location  
SS as per I-44

BONNIE BRAE  
BLOCK 18  
ZONING R-5

# THE BONNIE BRAES

PRELIMINARY PLAT

SEE ASSOCIATED COMMUNITY UNIT PLAN DP-107



VICINITY MAP

I-44