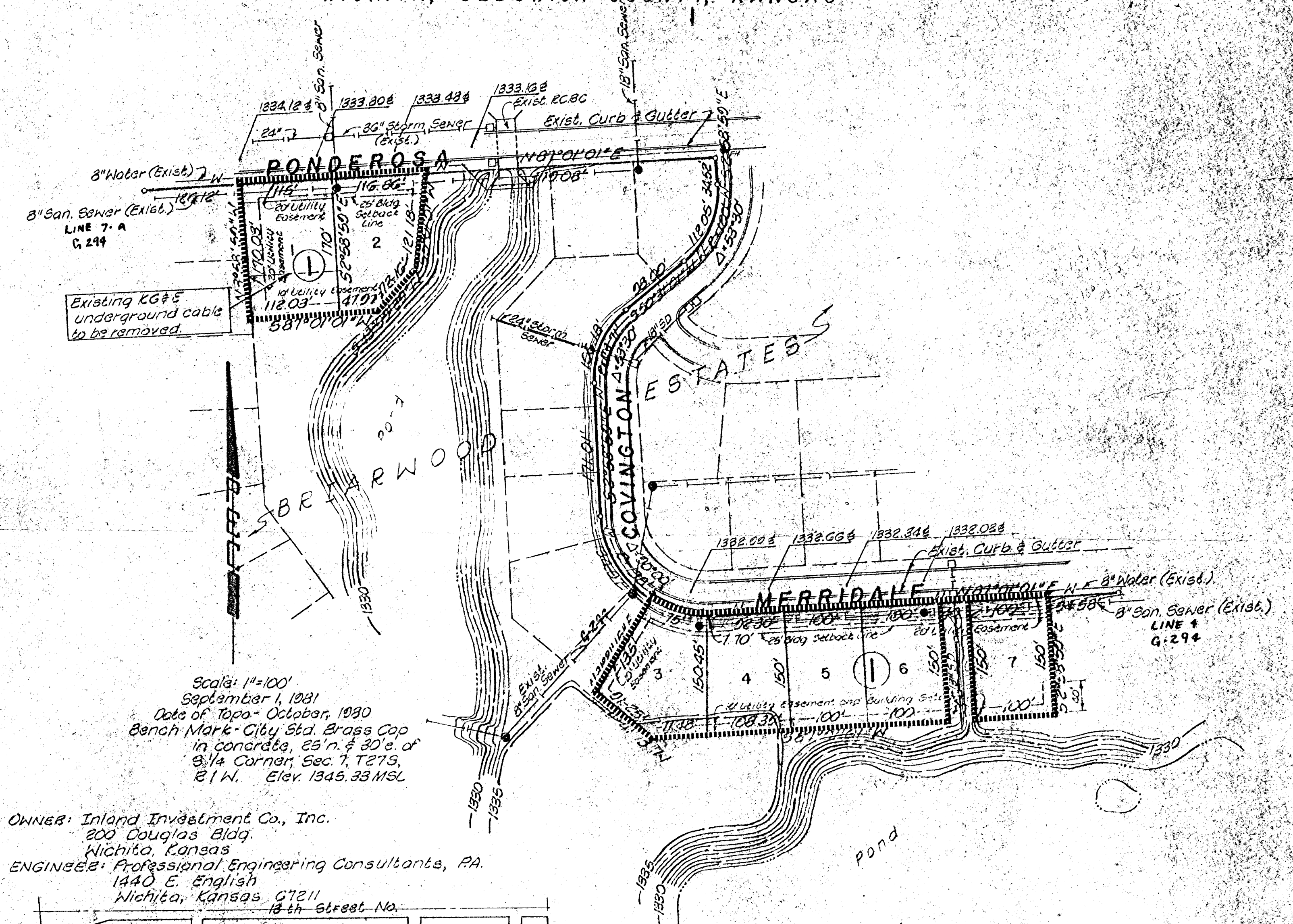


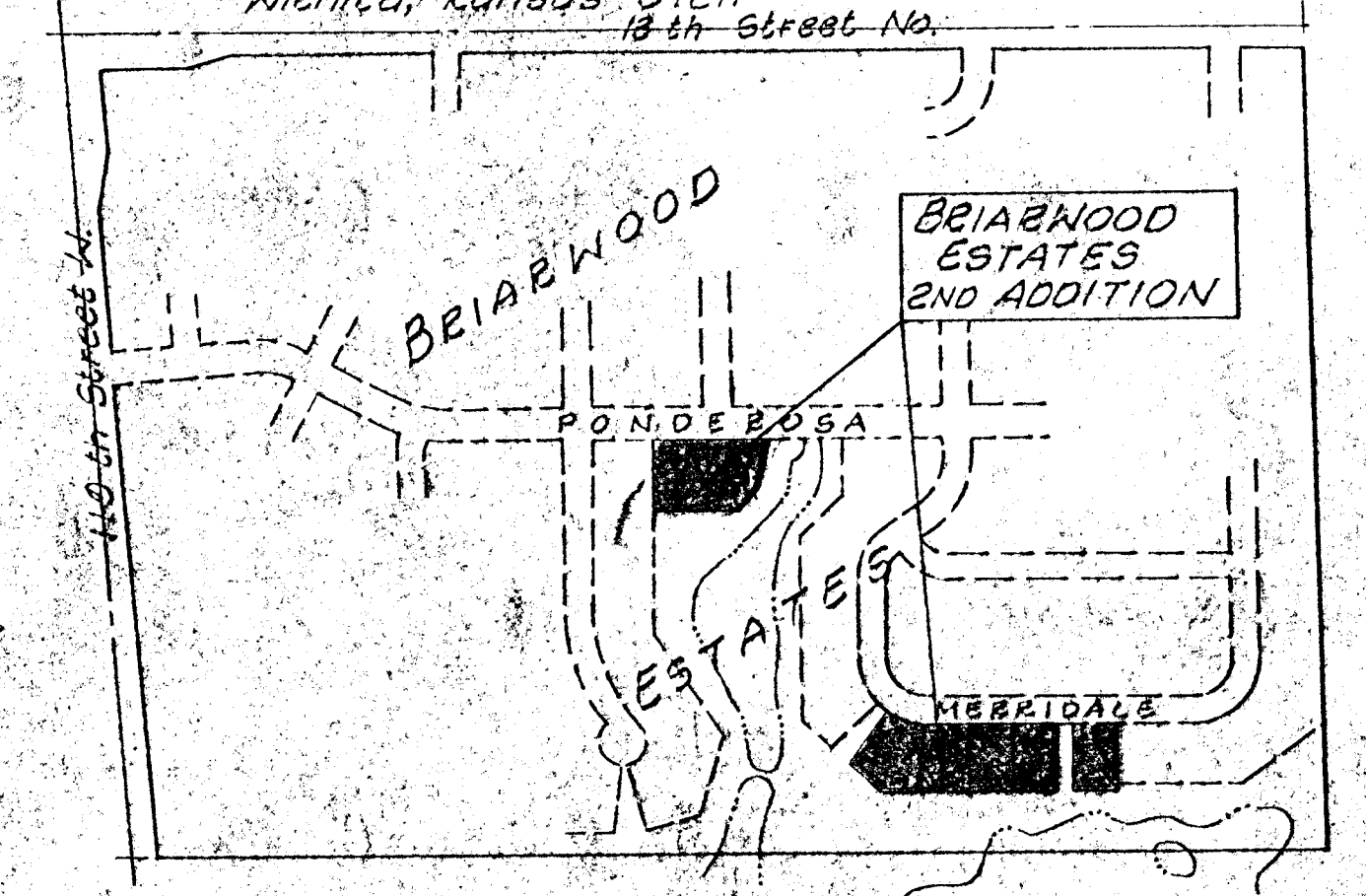
SKETCH PLAT

PRELIMINARY PLAT
BRIARWOOD ESTATES 2nd ADDITION
WICHITA, SEDGWICK COUNTY, KANSAS



Scale: 1"=100'
 September 1, 1981
 Date of Topo: October, 1980
 Bench Mark: City Std. Brass Cap
 in concrete, 25' n. & 30' e. of
 3/4 Corner, Sec. 7, T27S,
 R1W. Elev. 1345.33 MSL

OWNER: Inland Investment Co., Inc.
 200 Douglas Bldg.
 Wichita, Kansas
 ENGINEER: Professional Engineering Consultants, PA.
 1440 E. English
 Wichita, Kansas 67211
 18th Street No.



Utilities:
 Available as Shown - Sanitary Sewer
 Storm Sewer
 Water

Zoning: "AA"