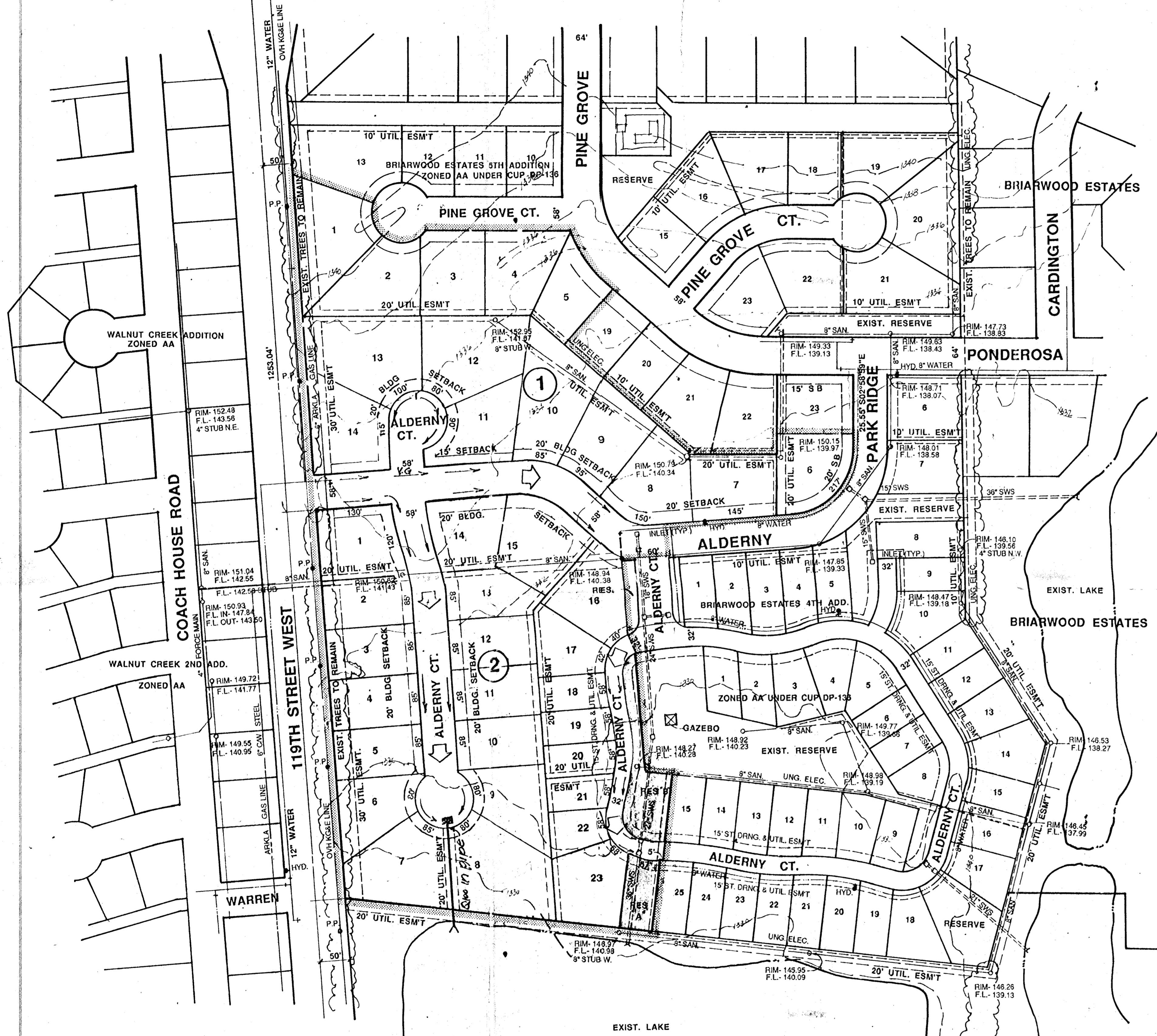


N.W. COR. N.W. 1/4
SEC. 18, T27S, R1W



NOTES:

BENCHMARK: CITY STD. BRASS CAP IN CONC. 25' N. & 30' E. OF S. 1/4 COR. SEC. 7, T27S, R1W. ELEV. 1345.33 M.S.L.

SETBACKS AND RESERVES SHALL MEET REQUIREMENTS AS SET FORTH UNDER BRIARWOOD ESTATES C.U.P. DP-136 GENERAL PROVISIONS.

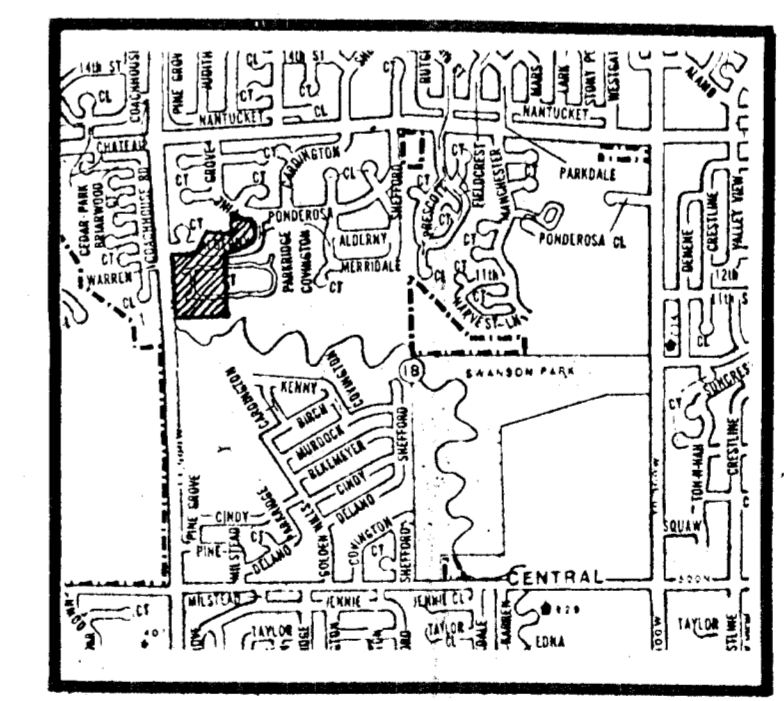
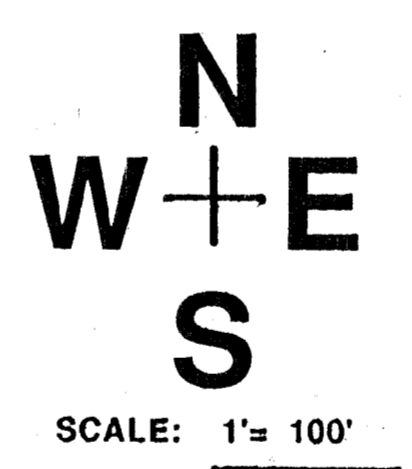
RESERVES "A" & "B" SHALL PERMIT DRAINAGE, UTILITIES CONFINED TO EASEMENTS, LANDSCAPING, PRIVATE ACCESS AND RECREATIONAL FACILITIES.

DRAINAGE CONCEPT PLAN SHALL BE PREPARED AND SUBMITTED BY PROFESSIONAL ENGINEERING CONSULTANTS.

MINIMUM PAD ELEVATIONS FOR ALL LOTS SHALL BE 1335.00 M.S.L.

LEGEND

- Drainage Direction - Minor storm
- ⇨ Drainage Direction - Major storm
- Proposed Storm Water Sewer & Inlet



LOCATION MAP

DRAINAGE CONCEPT
PRELIMINARY PLAT (REPLAT OF A PORTION OF BRIARWOOD ESTATES 4TH & 5TH ADDITIONS)
BRIARWOOD ESTATES 6TH ADDITION

OWNER: SLAWSON INVESTMENT COMPANY, INC., 104 S. BROADWAY, WICHITA, KANSAS 67202 PH: 263-3201

BILL G. YOUNG DESIGN
WICHITA, KS 67203
412 E. 25TH STREET NORTH
316-683-8827

DATE: MAY 1, 2004
REV:

SHEET TITLE: BRIARWOOD ESTATES 6TH ADDITION
PROJECT: PRELIMINARY PLAT
SHEET OF