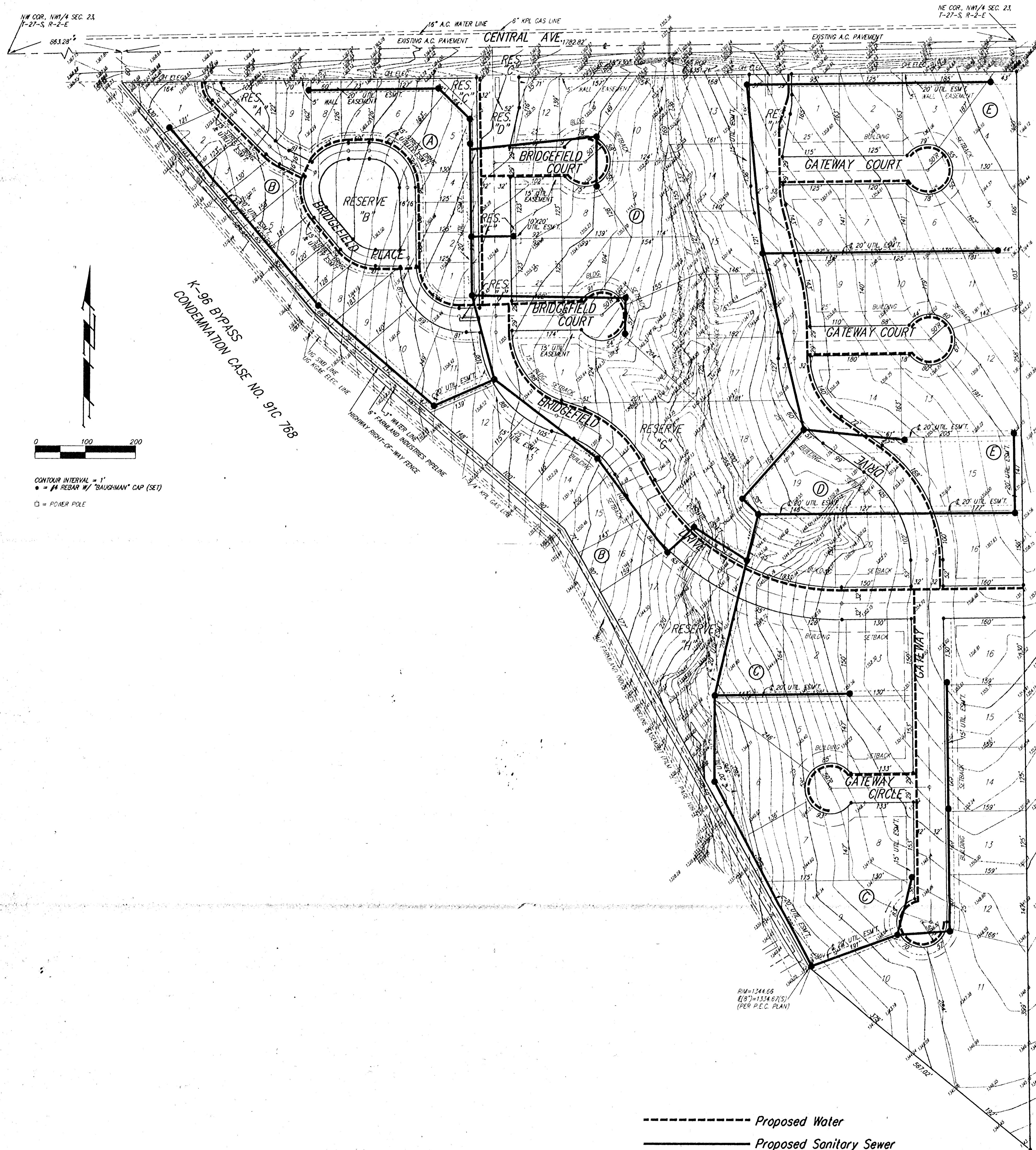


UTILITY CONCEPT  
**BRIDGEFIELD ADDITION**  
 WICHITA, SEDGWICK COUNTY, KANSAS



K-96 BYPASS  
 CONDEMNATION CASE NO. 91C-708

CONTOUR INTERVAL = 1'  
 ● = #4 REBAR W/ "BAUGHMAN" CAP (SET)  
 □ = POWER POLE

----- Proposed Water  
 \_\_\_\_\_ Proposed Sanitary Sewer