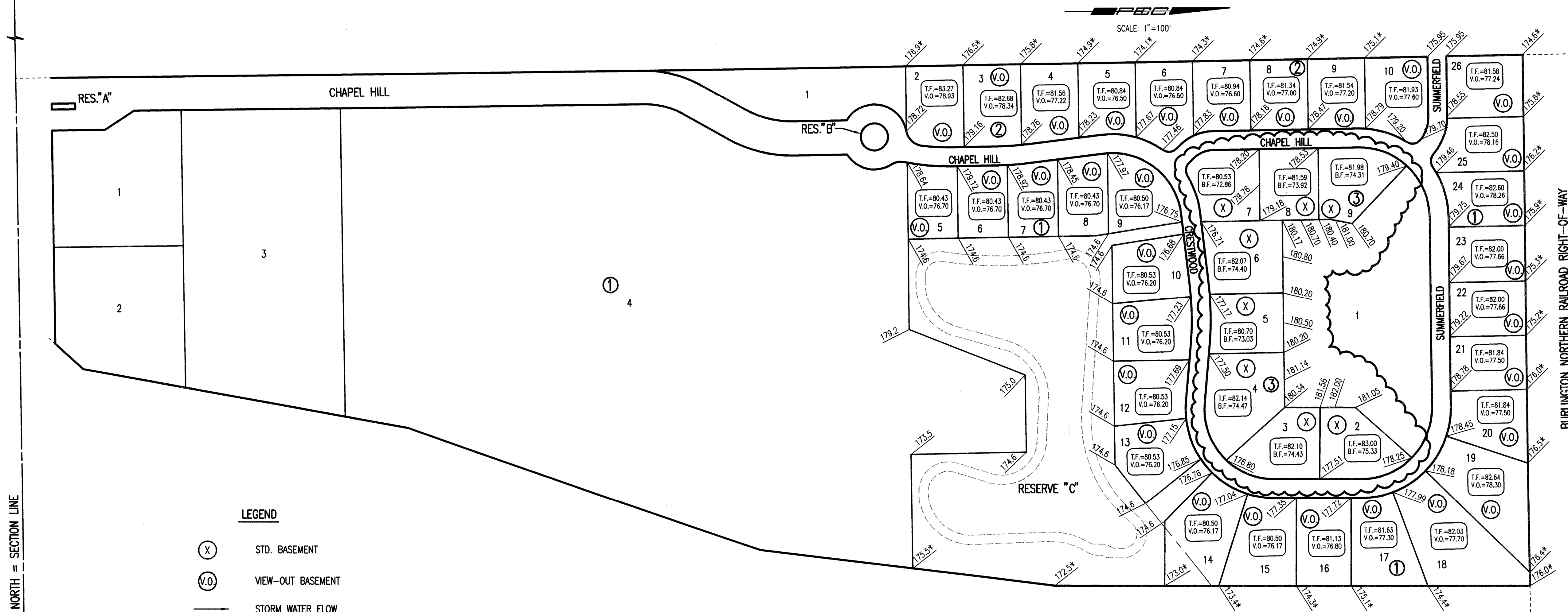


FOUR CORNER PLAN
CHAPEL HILL 2ND ADDITION
 TO WICHITA, SEDGWICK COUNTY, KANSAS

S.W. Corner, S.W. 1/4
 Sec. 10, T27S, R2E
 of the 6th P.M.
 Found 3/4" I.P.

N.W. Corner, S.W. 1/4
 Sec. 10, T27S, R2E
 of the 6th P.M.
 Found R.R. Spike in Pavt.



LEGEND

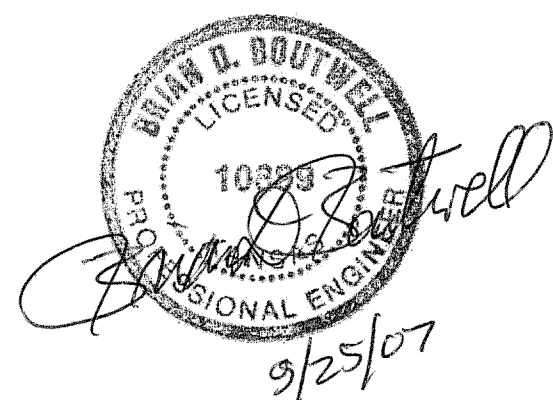
- (X) STD. BASEMENT
- (V.O.) VIEW-OUT BASEMENT
- STORM WATER FLOW
- 156.0 SPOT ELEVATION
- 56.0 MATCH EXISTING ELEVATION
- V.O. VIEW-OUT
- T.F. TOP OF FOUNDATION
- B.F. BASEMENT FLOOR

MINIMUM PAD ELEVATIONS (LOWEST OPENING) AS FOLLOWS:

LOTS 4 THROUGH 14 BLOCK 1
 ELEV = 175.60 CITY DATUM
 ELEV = 1363.0 N.G.V.D.

VO OR WO WAS CONSIDERED ACCEPTABLE
 IF THE TOP OF FOUNDATION WAS 5' OR
 LESS ABOVE THE STREET RIGHT-OF-WAY ELEVATION.

K-96 BYPASS



REVISED SEPTEMBER 18, 2007

N.E. Corner, S.W. 1/4
 Sec. 10, T27S, R2E
 of the 6th P.M.
 Found 3/4" I.P. in
 center of Split Stone

Saved: 09-18-2007 5:05:18 PM by: JMB
 C:\2007\02580\1.DWG 02580.dwg 10/25/07 10:25:18 AM