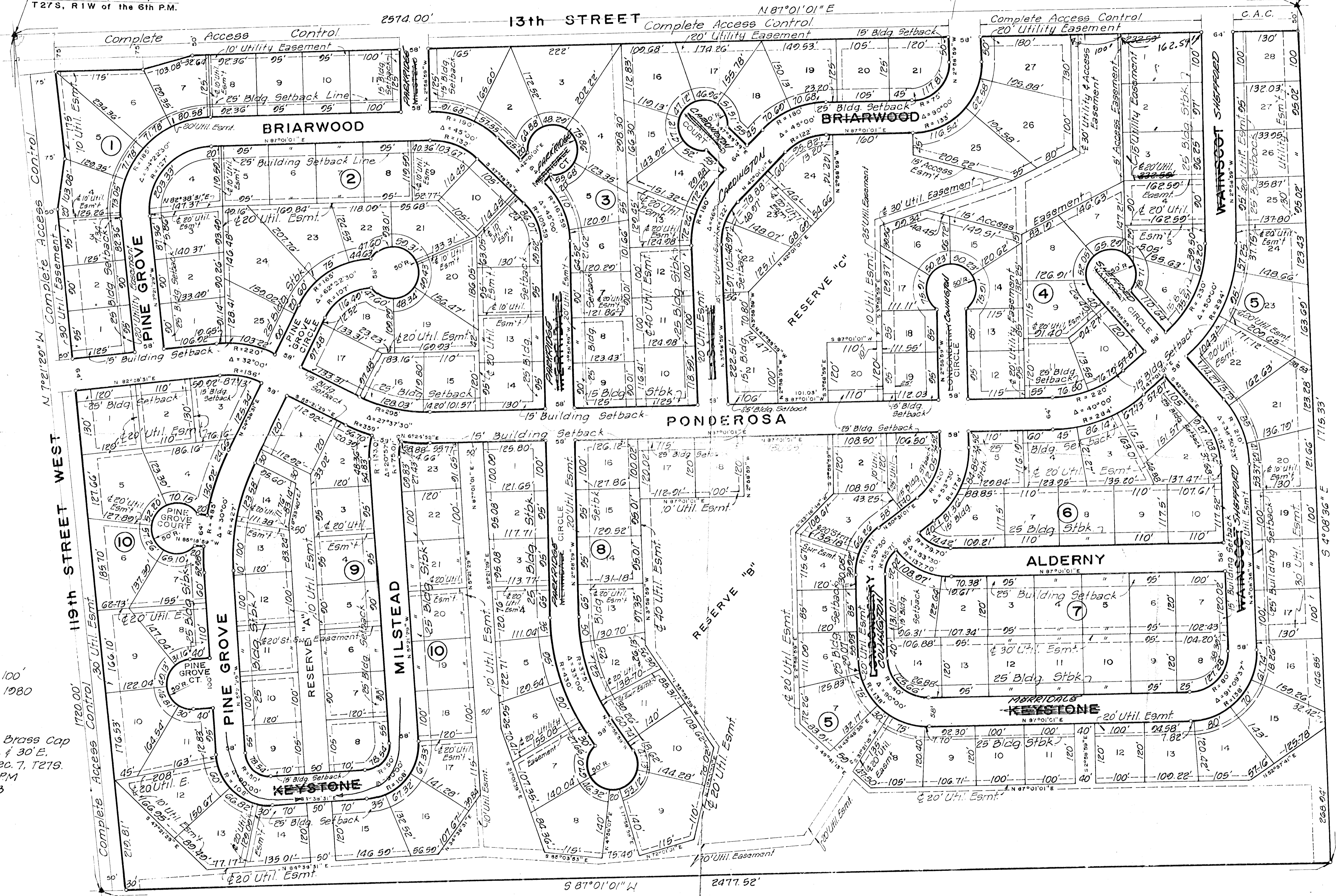


BRIARWOOD ESTATES

WICHITA, SEDGWICK COUNTY, KANSAS

NW Cor., NW 1/4, SEC. 18,
T 27 S, R 1 W of the 6th P.M.

N.E. Cor., N.W. 1/4, Sec. 18,
T 27 S, R 1 W of the
6th P.M.



Minimum Pad Elevations
Minimum Pad

Block	Minimum Pad Elevations
Block 4	
Lots 16 thru 24	1336.00
Lots 14 & 15	1337.00
Lots 4, 5, 7, 8 & 25	1338.00
Lots 2, 3 & 26	1339.00
Lots 1 & 27	1340.00
Block 5	
Lots 12 thru 16	1334.00
Lots 8 thru 11	1335.00
Lots 1 thru 7	1336.00
Block 6	
Lots 6, 7 & 8	1335.00
Block 7	
Lots 5 thru 10	1334.00
Lots 1 thru 4,	
11 thru 14	1335.00
Block 8	
Lots 1 thru 18	1336.00
Block 9	
Lots 3 thru 14	1337.00
Block 10	
Lots 6 thru 22	1337.00

Scale 1" = 100'
February 1980

B.M. City Std. Brass Cap
in Con. 25' No. & 30' E.
of S 1/4 Cor. Sec. 7, T 27 S.
R 1 W of 6th P.M.
Elev. = 1345.33