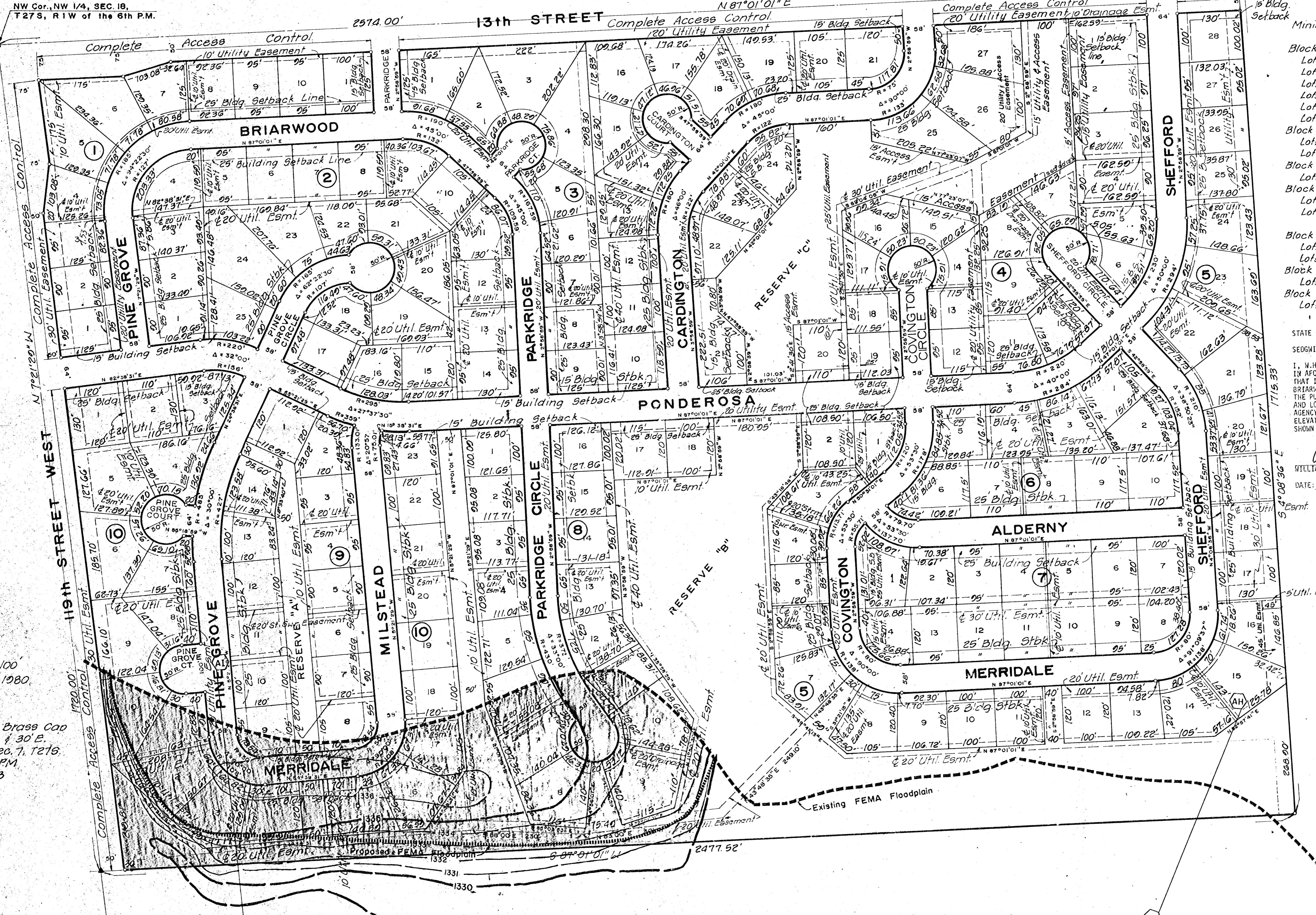


# BRIARWOOD ESTATES

WICHITA, SEDGWICK COUNTY, KANSAS

N.E. Cor. N.W. 1/4, Sec. 18,  
T27S, R17W of the  
6th P.M.

NW Cor., NW 1/4, SEC. 18,  
T27S, R17W of the 6th P.M.



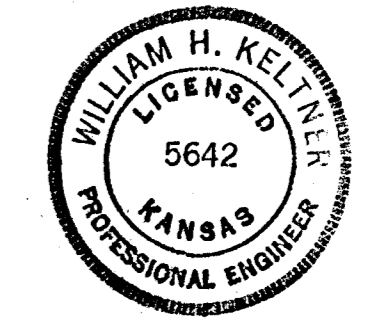
Block	Minimum Pad Elevations	Minimum Pad
Block 4		
Lots 18 thru 22	1336.00	
Lots 17 & 18	1337.00	
Lots 16 & 24	1338.00	
Lots 14 & 15	1339.00	
Lots 8 & 25	1340.00	
Lots 1 thru 7, 26 & 27	1341.00	
Block 5		
Lots 12 thru 16	1334.00	
Lots 1 thru 11	1335.00	
Block 6		
Lots 6, 7 & 8	1335.00	
Block 7		
Lots 5 thru 10	1334.00	
Lots 1 thru 4, 11 thru 14	1335.00	
Block 8		
Lots 1 thru 8	1336.00	
Lots 9 thru 13	1335.00	
Block 9		
Lots 3 thru 14	1337.00	
Block 10		
Lots 6 thru 22	1337.00	

STATE OF KANSAS) SS  
SEDGWICK COUNTY)

I, W. H. Keltner, a LICENCED PROFESSIONAL ENGINEER  
IN AFOSAID STATE AND COUNTY, DO HEREBY CERTIFY  
THAT I HAVE CAUSED TO BE SURVEYED A PORTION OF  
BRIARWOOD ESTATES ADDITION TO WICHITA, KANSAS FOR  
THE PURPOSE OF DETERMINING EXISTING GROUND ELEVATIONS  
AND LOCATION OF THE FEDERAL EMERGENCY MANAGEMENT  
AGENCY (FEMA) 100 YEAR FLOODPLAIN, AND THAT  
ELEVATIONS IN THE FIELD ARE AT OR ABOVE THE CONTOURS  
SHOWN ON THE ACCOMPANYING DRAWING.

William H. Keltner  
WILLIAM H. KELTNER, P.E.

DATE: Dec. 18, 1980



Scale 1" = 100'  
February 1980.

B.M. City Std. Brass Cap  
in Corn. 25 No. 4 30 E.  
of S 1/4 Cor. Sec. 7, T27S,  
R17W of 6th P.M.  
Elev. = 1345.33