

Brought to office by Gary Wiley March 3, 1980

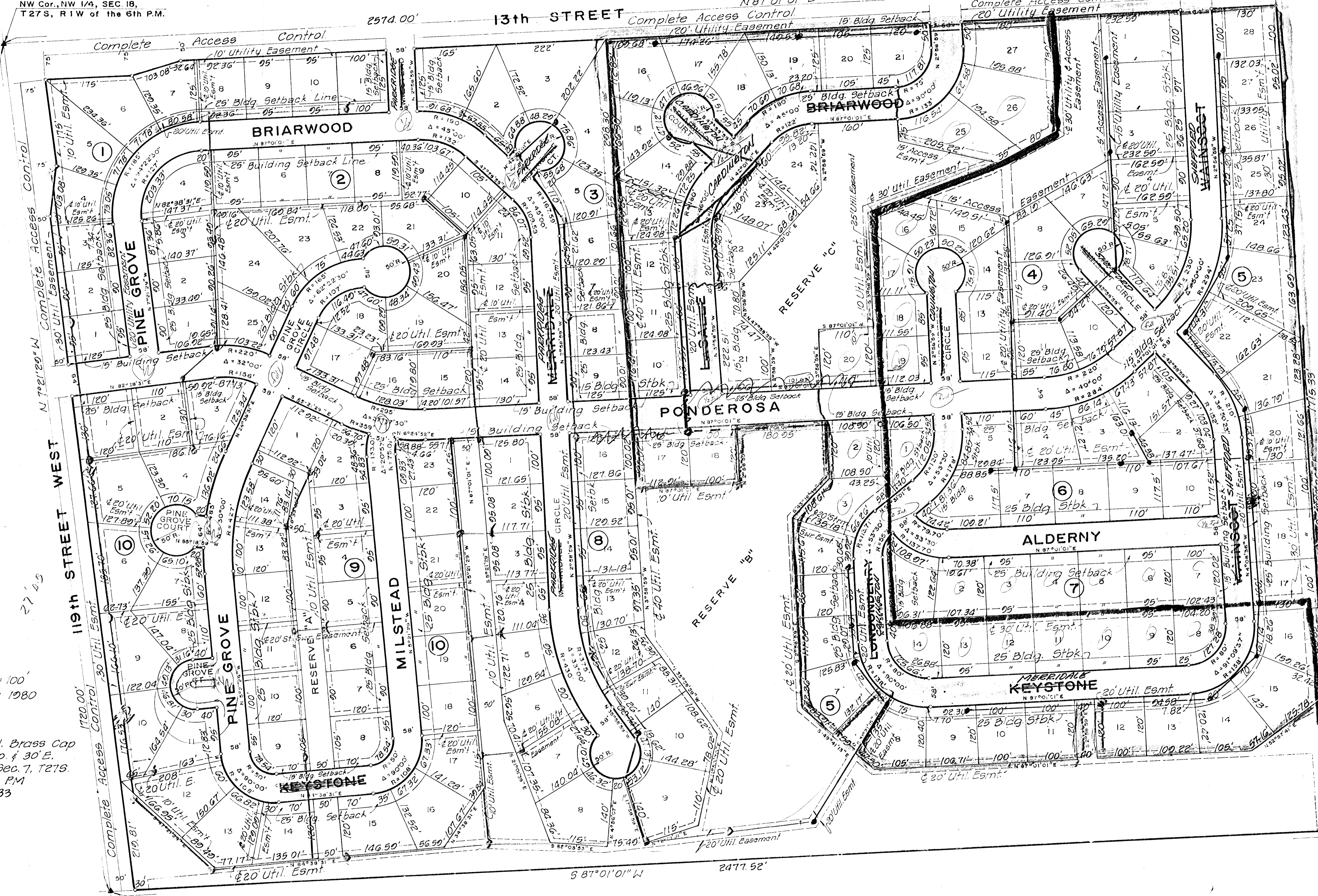
Revised copy

N.E. Cor. N.W. 1/4, Sec. 18,
T.27S, R.1W of the
6th P.M.

BRIARWOOD ESTATES

WICHITA, SEDGWICK COUNTY, KANSAS

NW Cor., NW 1/4, SEC. 18,
T.27S, R.1W of the 6th P.M.



Minimum Pad Elevations

Block	Minimum Pad
Block 4	
Lots 16 thru 24	1336.00
Lots 14 & 15	1337.00
Lots 4, 5, 7, 8 & 25	1338.00
Lots 2, 3 & 26	1339.00
Lots 1 & 27	1340.00
Block 5	
Lots 12 thru 16	1334.00
Lots 8 thru 11	1335.00
Lots 1 thru 7	1336.00
Block 7	
Lots 5 thru 10	1334.00
Lots 1 thru 4, 11 thru 14	1335.00
Block 8	
Lots 1 thru 18	1336.00
Block 9	
Lots 3 thru 14	1337.00
Block 10	
Lots 6 thru 22	1337.00

Benefit District Like
for Sewer Sanitary Sewer

Benefit Dist. (for Phase I - Pavement)

SEWER
main

Scale 1"=100'
February 1980

B.M. City Std. Brass Cap
in Cor. 25' No. 4 30' E.
of S 1/4 Cor. Sec. 7, T.27S.
R.1W of 6th P.M.
Elev = 1345.33

72
72