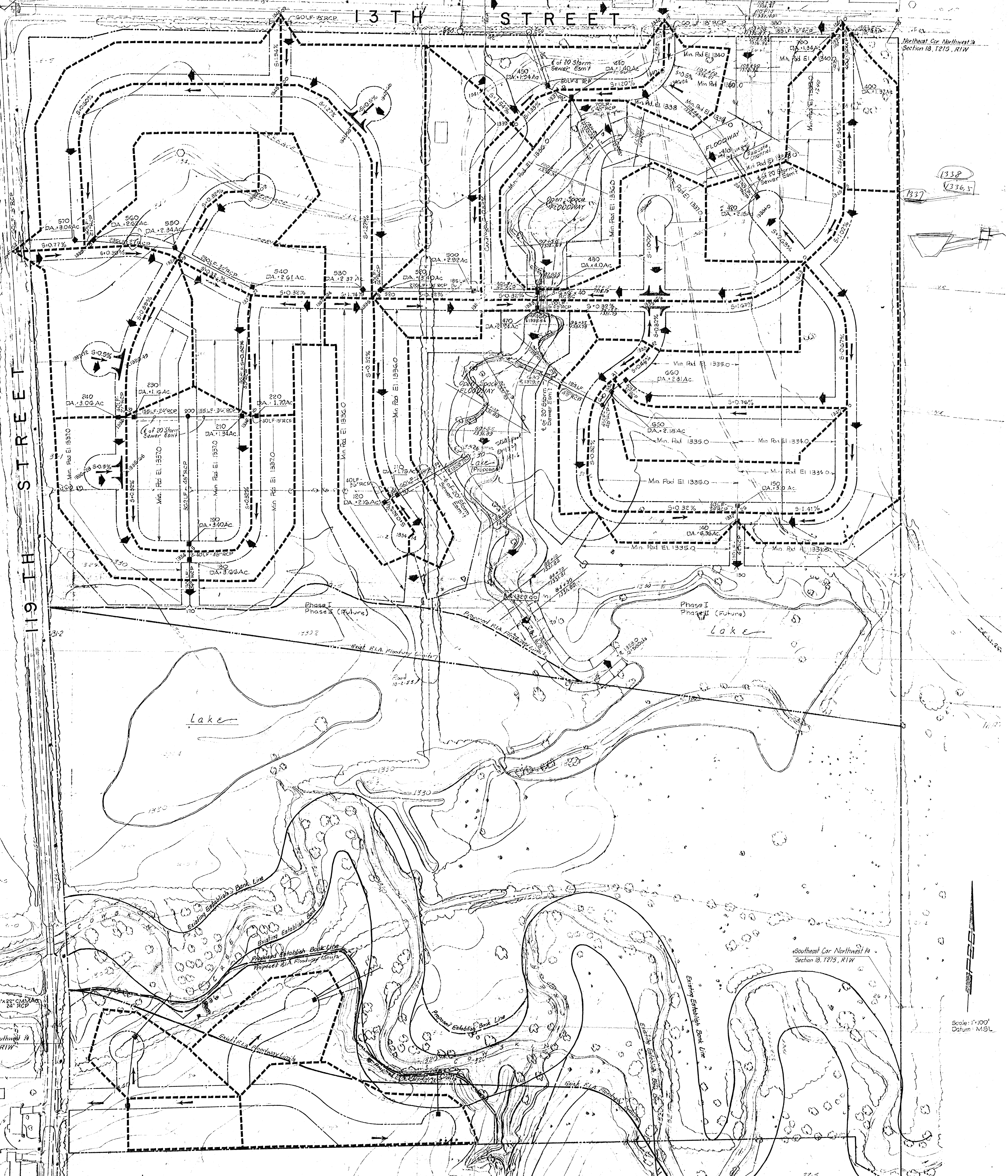


ECHO HILLS

ECHO HILLS

Northwest Cor. Northwest 1/4
Section 18, T215, R11W

Northwest Cor. Northwest 1/4
Section 18, T215, R11W



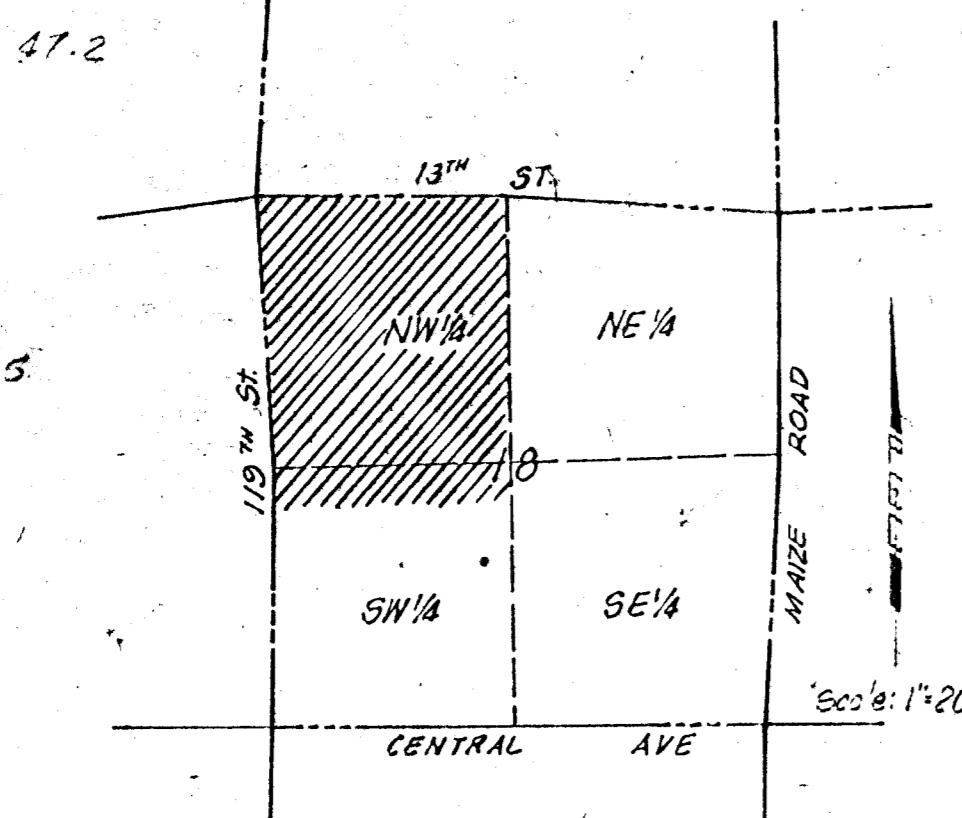
19TH STREET

13TH STREET

Northwest Cor. Southwest 1/4
Section 18, T216, R11W

Southwest Cor. Northwest 1/4
Section 18, T215, R11W

Scale: 1"=100'
Datum: MSL



Vicinity Map
SEC. 18, T216, R11W

LEGEND

- STREET GRADE
- FLOW ARROW
- 100 YR FLOOD ROUTING
- DRAINAGE BOUNDARY
- COMPUTER NODE NUMBER
- CURB INLET
- MANHOLE
- OUTLET
- DRAINAGE AREA
- 100 YR FLOOD ELEV. IN CHANNEL
- TOP OF CURB ELEV.

No.	Revision	By	Date
BRIARWOOD ESTATES Owner/Developer: Inland Investments Co., Inc. PROFESSIONAL ENGINEERING CONSULTANTS, P.A. ENGINEERS WICHITA, KANSAS			
Designed by	Job No. 79280	Sht. of	
Drawn by SCOTT	Date: FEB. 1990		

