

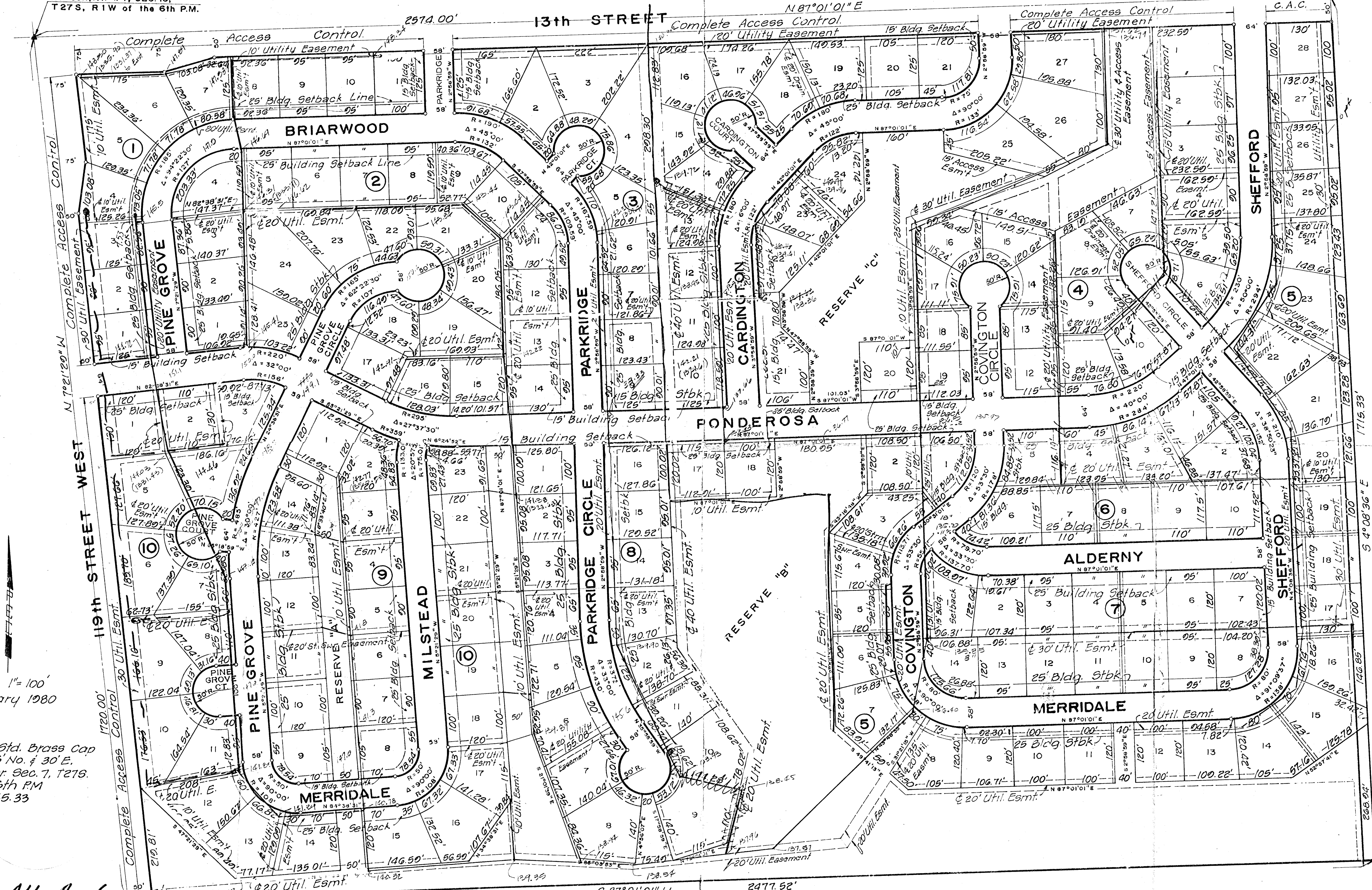
BRIARWOOD ESTATES

WICHITA, SEDGWICK COUNTY, KANSAS

NW Cor., NW 1/4, SEC. 18,
T27S, R1W of the 6th P.M.

NE Cor., NW 1/4, Sec 18,
T27S, R1W of the
6th P.M.

MH 15-135.32
135.02
135.94



Scale 1"=100'
February 1980

B.M. City Std. Brass Cap
in Cor. 25' No. & 30' E.
of S 1/4 Cor. Sec. 7, T27S.
R1W of 6th P.M.
Elev. = 1345.33

Minimum Pad Elevations

Block	Minimum Pad
Block 4	
Lots 18 thru 22	1336.00
Lots 17 & 18	1337.00
Lots 16 & 24	1338.00
Lots 14 & 15	1339.00
Lots 8 & 25	1340.00
Lots 1 thru 7, 26 & 27	1341.00
Block 5	
Lots 12 thru 16	1334.00
Lots 1 thru 11	1335.00
Block 6	
Lots 6, 7 & 8	1335.00
Block 7	
Lots 5 thru 10	1334.00
Lots 1 thru 4	1335.00
11 thru 14	1335.00
Block 8	
Lots 1 thru 8	1336.00
Lots 9 thru 13	1335.00
Block 9	
Lots 3 thru 14	1337.00
Block 10	
Lots 6 thru 22	1337.00

Dals MSP.

Alt. Route