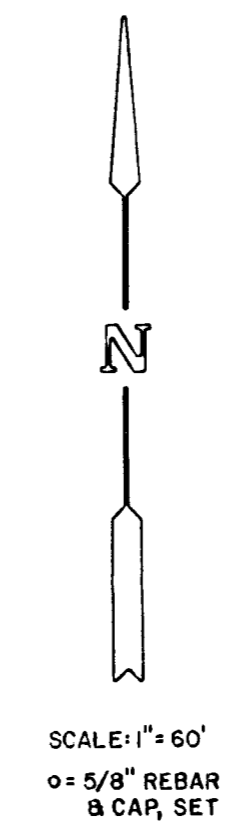
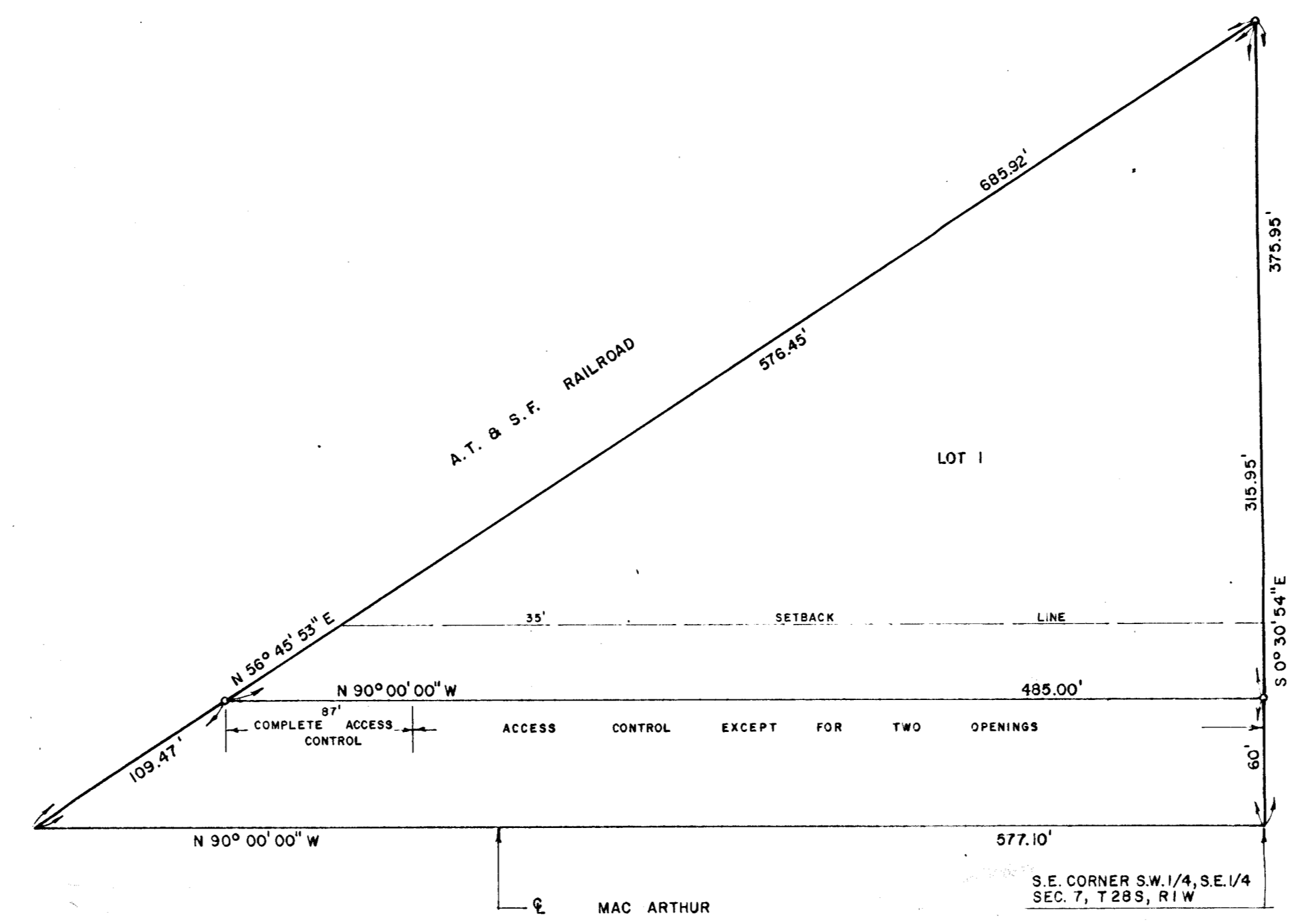


Baalmann 2nd Addn

BAALMANN SECOND ADDITION SEDGWICK COUNTY, KANSAS



LEGAL DESCRIPTION:
 All that part of the Southwest Quarter of the Southeast Quarter of Section 7, Township 28 South, Range 1 West of the Sixth Principal Meridian, Sedgwick County, Kansas, lying south of the Atchison, Topeka and Santa Fe Railroad right-of-way.

STATE OF KANSAS)
 COUNTY OF SEDGWICK) ss
 I, Adolf E. Reiss, being a duly registered land surveyor in the aforesaid County and State, do hereby certify that I have caused the tract of land as set forth in the Legal Description to be surveyed and platted and that said survey and the accompanying exhibit are true and correct to be best of my knowledge and information available.

Adolf E. Reiss LS #77 DATE May 30, 1985

Know all people by these presents that Baalmann Wholesale Lumber Co., Inc., by its President, Harold Baalmann has caused the tract of land as set forth in the Legal Description to be surveyed and platted into one (1) lot and a street to be known as "Baalmann Second Addition," Sedgwick County, Kansas. Utility easements as indicated on the plat, if any, are hereby granted for the construction and maintenance of all public utilities. The street is hereby dedicated to and for the use of the public. All abutter's rights of access to Mac Arthur over and across the South line of Lot 1 are hereby granted to the appropriate Governing Body, provided however that Lot 1 shall have access to Mac Arthur at two (2) locations over the East 398.00 feet of Lot 1, said locations to be determined by the appropriate Engineer.

Harold Baalmann
 HAROLD BAALMANN, PRESIDENT

STATE OF KANSAS)
 COUNTY OF SEDGWICK) ss
 The foregoing instrument was acknowledge before me this 28th day of August, 1985 by Harold Baalmann, President of Baalmann Wholesale Lumber Co., Inc., a Kansas Corporation, on behalf of the Corporation.

Charles M. Goodness, Notary Public
 My Appointment Expires Jan. 4, 1986


Air Capitol Land Surveyors
 2160 W 21st STREET (316) 838-9071
 WICHITA, KANSAS 67203

This plat of "Baalmann Second Addition," Sedgwick County, Kansas has been submitted to and approved by the Wichita-Sedgwick County Metropolitan Area Planning Commission, Wichita, Kansas.
 Dated this 21st day of March, 1985.

WICHITA-SEDGWICK COUNTY METROPOLITAN AREA PLANNING COMMISSION
 By William J. Cobbel, Chairman
Jack H. Galbraith, Asst. Secretary

This plat approved and all dedications shown hereon, if any, accepted by the Board of City Commissioners of the City of Wichita, Kansas, this 17th day of SEP, 1985.
Robert E. Brown, Mayor
Donald C. Gisick, City Clerk

This plat approved and all dedications shown hereon, if any, accepted by the Board of County Commissioners of Sedgwick County, Kansas, this _____ day of _____, 19____.

_____, Chairman
 DONALD E. GRAGG
 _____, Commissioner
 BERNARD A. HENTZEN
 _____, Commissioner
 TOM SCOTT

ATTEST: _____, County Clerk
 DON WRIGHT

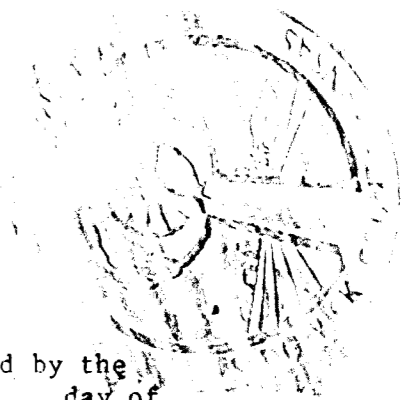
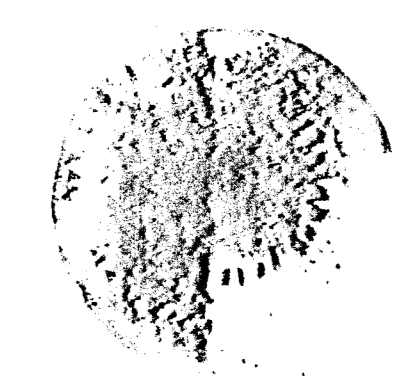
Entered on transfer record this _____ day of _____, 19____.

_____, County Clerk
 DON WRIGHT

STATE OF KANSAS)
 COUNTY OF SEDGWICK) ss
 This is to certify that this instrument was filed for record in the Register of Deeds Office, at _____ o'clock _____ M. on the _____ day of _____, 19____.

_____, Register of Deeds
 PAT KETTLER
 _____, Deputy
 ED REISA

BAALMANN SECOND ADDITION



C