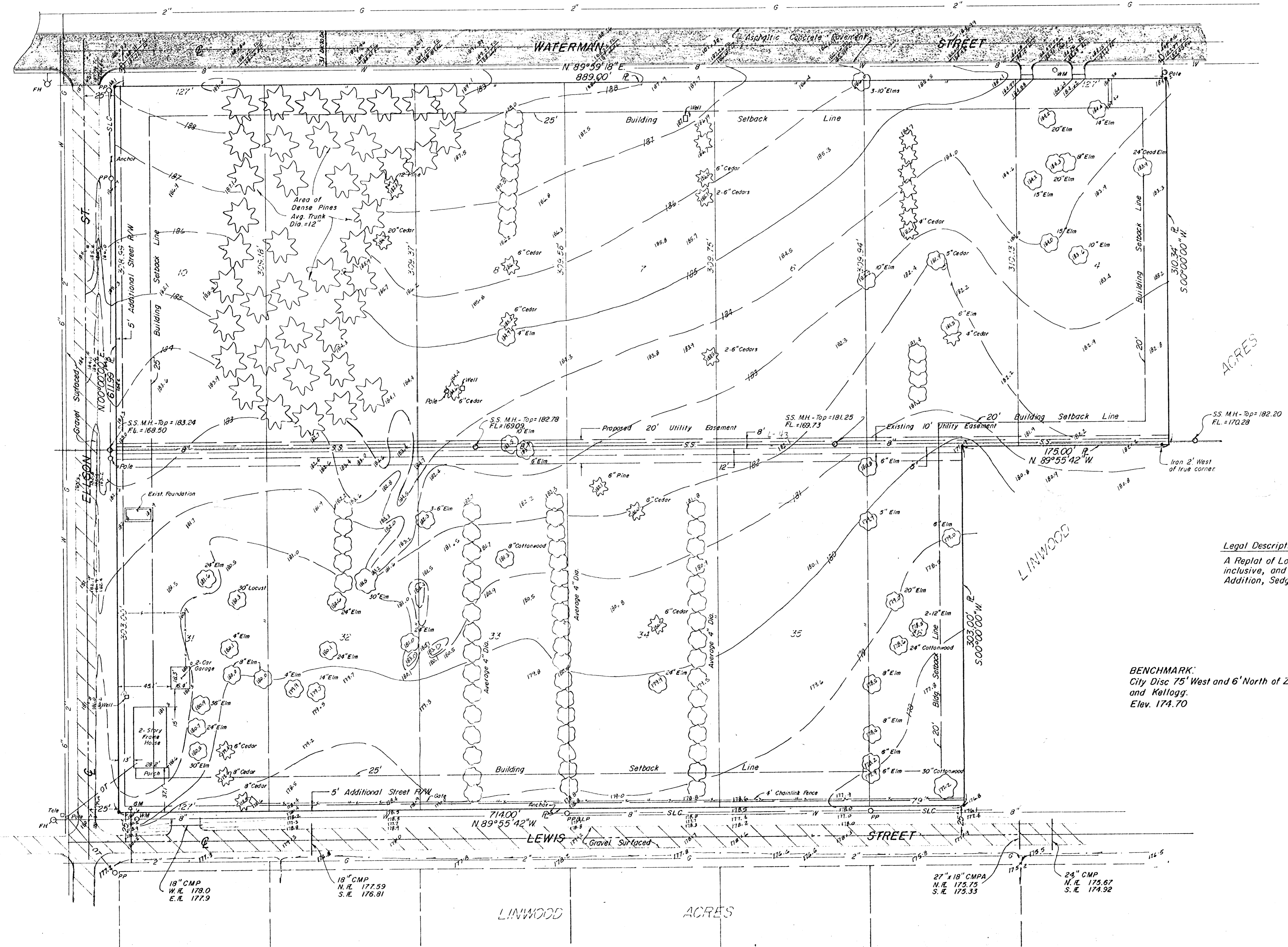
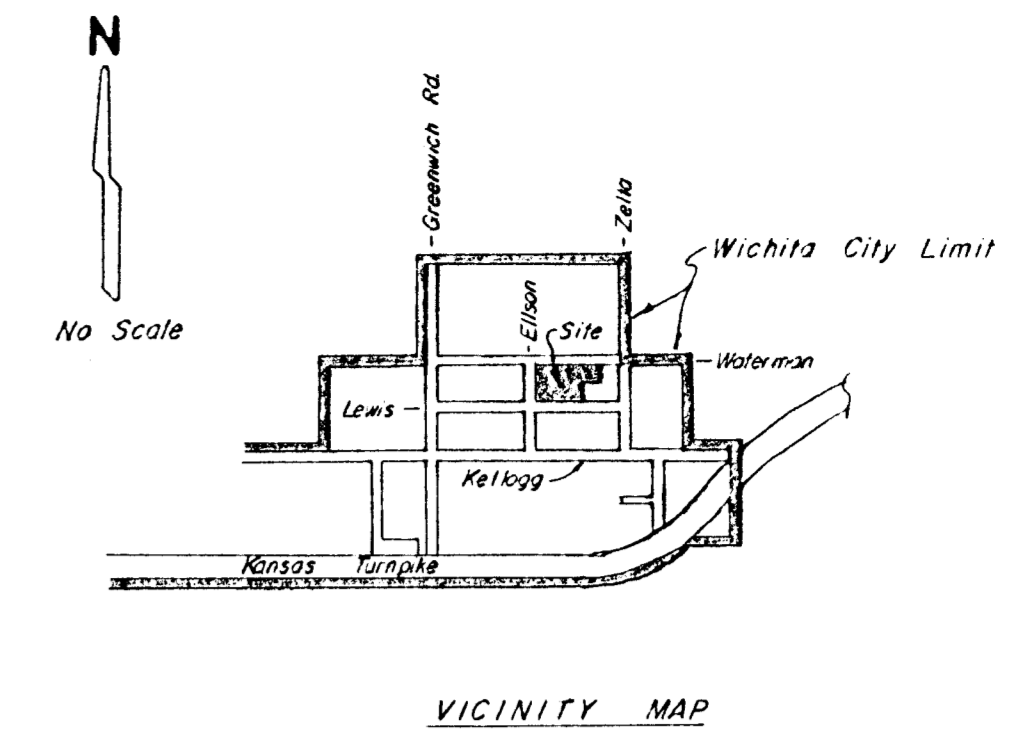


PRELIMINARY PLAT of BAXTER PLACE TO WICHITA, KANSAS



- N
- 1" = 40'
- = Iron
 - W = Water Main
 - FH = Fire Hydrant
 - SS = Sanitary Sewer
 - S.L.C. = Street Light Circuit
 - R = Property Line
 - 10.1 = Spot Elevation
 - G = Gas Main
 - W.M. = Water Meter
 - G.M. = Gas Meter
 - O.T. = Overhead Tele.
 - P.P. = Power Pole

ACRES

Legal Description:
A Replat of Lots 4 thru 10 inclusive, and Lots 31 thru 35, inclusive, and the West 79.0' of Lot 36, Linwood Acres Addition, Sedgwick County, Kansas.

BENCHMARK:
City Disc 75' West and 6' North of Zelta and Kellogg.
Elev. 174.70

MOEHRING & ASSOCIATES
CONSULTING ENGINEERS
WICHITA



18" CMP
W.R. 178.0
E.R. 177.9

18" CMP
N.R. 177.59
S.R. 176.91

27" x 18" CMPA
N.R. 175.75
S.R. 175.33

24" CMP
N.R. 175.67
S.R. 174.92

LINWOOD ACRES