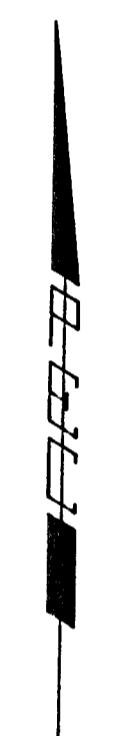
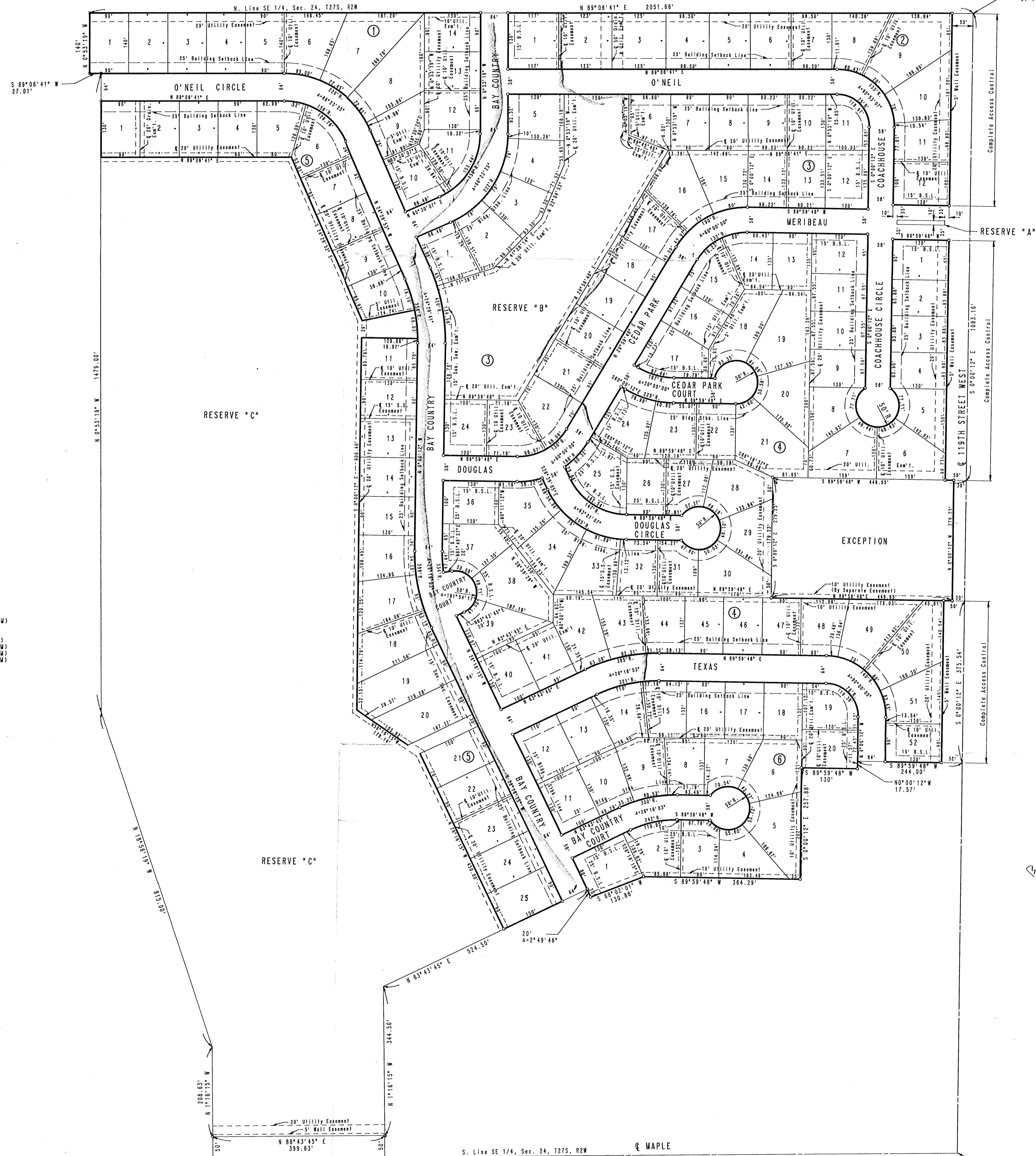


# BAY COUNTRY ESTATES 2ND ADDITION

TO WICHITA, SEDGWICK COUNTY, KANSAS

N.E. Cor. S.E. 1/4  
Sec. 24, T27S, R2W  
of the 6th P.M.



SCALE: 1" = 100'

○ = IRON SET  
 C.A.C. = COMPLETE ACCESS CONTROL  
 B.S.L. = BUILDING SETBACK LINE  
 S.S. ESM'T. = SANITARY SEWER EASEMENT  
 B.M. = DISK 40' EAST AND 48' SOUTH  
 OF INTERSECTION AT 8' OF CENTRAL  
 WITH 8 OF 119TH STREET WEST  
 CITY DATUM ELEV. +156.93

MINIMUM PAD ELEVATIONS SHALL BE AS FOLLOWS:  
 LOTS 1 THROUGH 5, BLOCK 1 = 1327 W.S.L. = 139.6 (CITY DATUM)  
 LOTS 1 AND 2, BLOCK 2 = 1333 W.S.L. = 145.6 (CITY DATUM)  
 LOTS 1 THROUGH 6 AND LOTS 16 THROUGH 24, BLOCK 3 =  
 1327.2 W.S.L. = 139.8 (CITY DATUM)  
 LOTS 1 THROUGH 3, BLOCK 5 = 1327 W.S.L. = 139.6 (CITY DATUM)  
 LOTS 4 THROUGH 10, BLOCK 5 = 1326 W.S.L. = 139.6 (CITY DATUM)  
 LOTS 11 THROUGH 16, BLOCK 5 = 1325 W.S.L. = 137.6 (CITY DATUM)  
 LOTS 17 THROUGH 20, BLOCK 5 = 1324 W.S.L. = 136.6 (CITY DATUM)  
 LOTS 21 THROUGH 25, BLOCK 5 = 1323 W.S.L. = 135.6 (CITY DATUM)

S.E. Cor. Sec. 24,  
T27S, R2W of the 6th P.M.

*Bay Country  
Estate  
2nd*