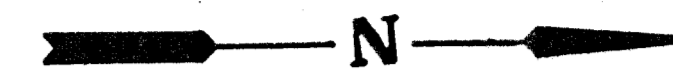


**FINAL PLAT OF
BEACON HILL**
AN ADDITION TO WICHITA, SEDGWICK COUNTY, KANSAS

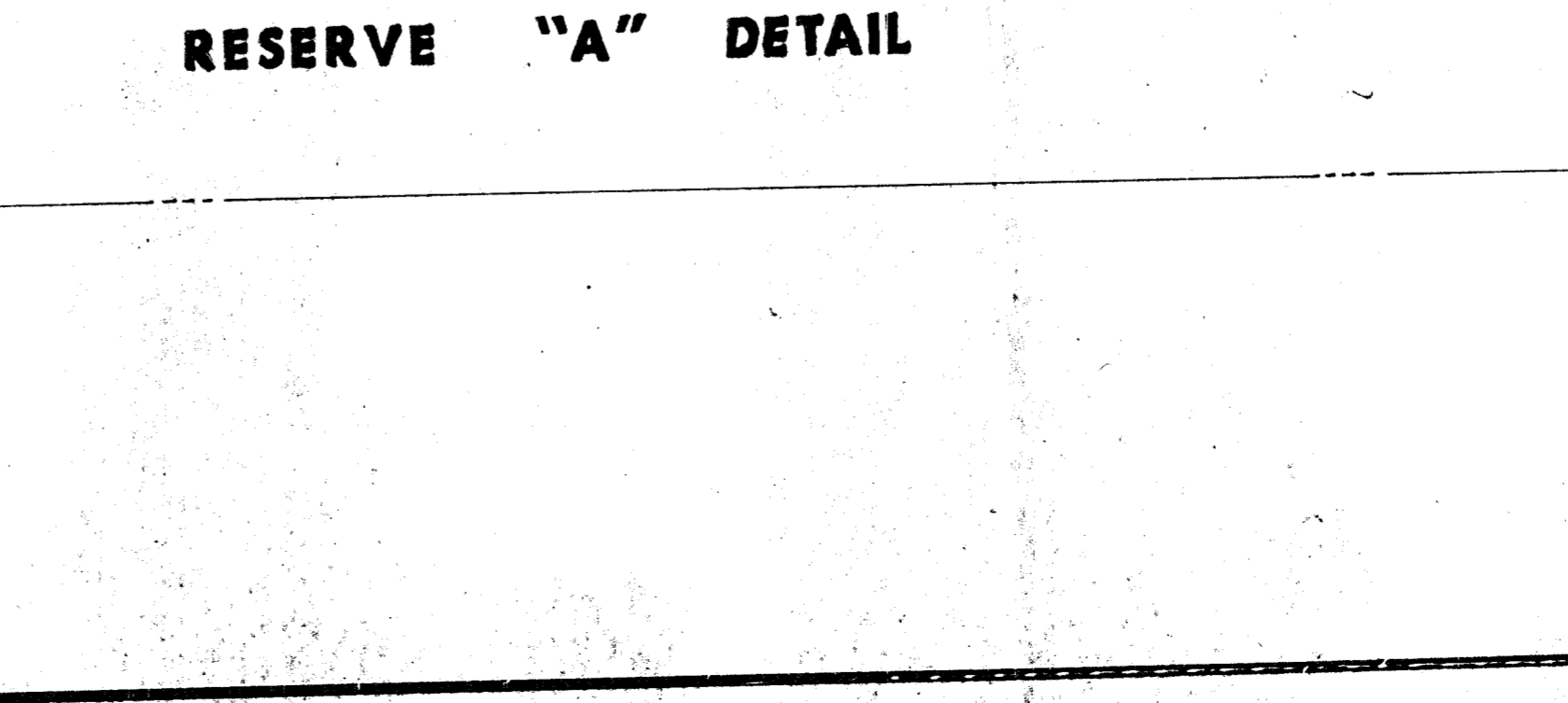
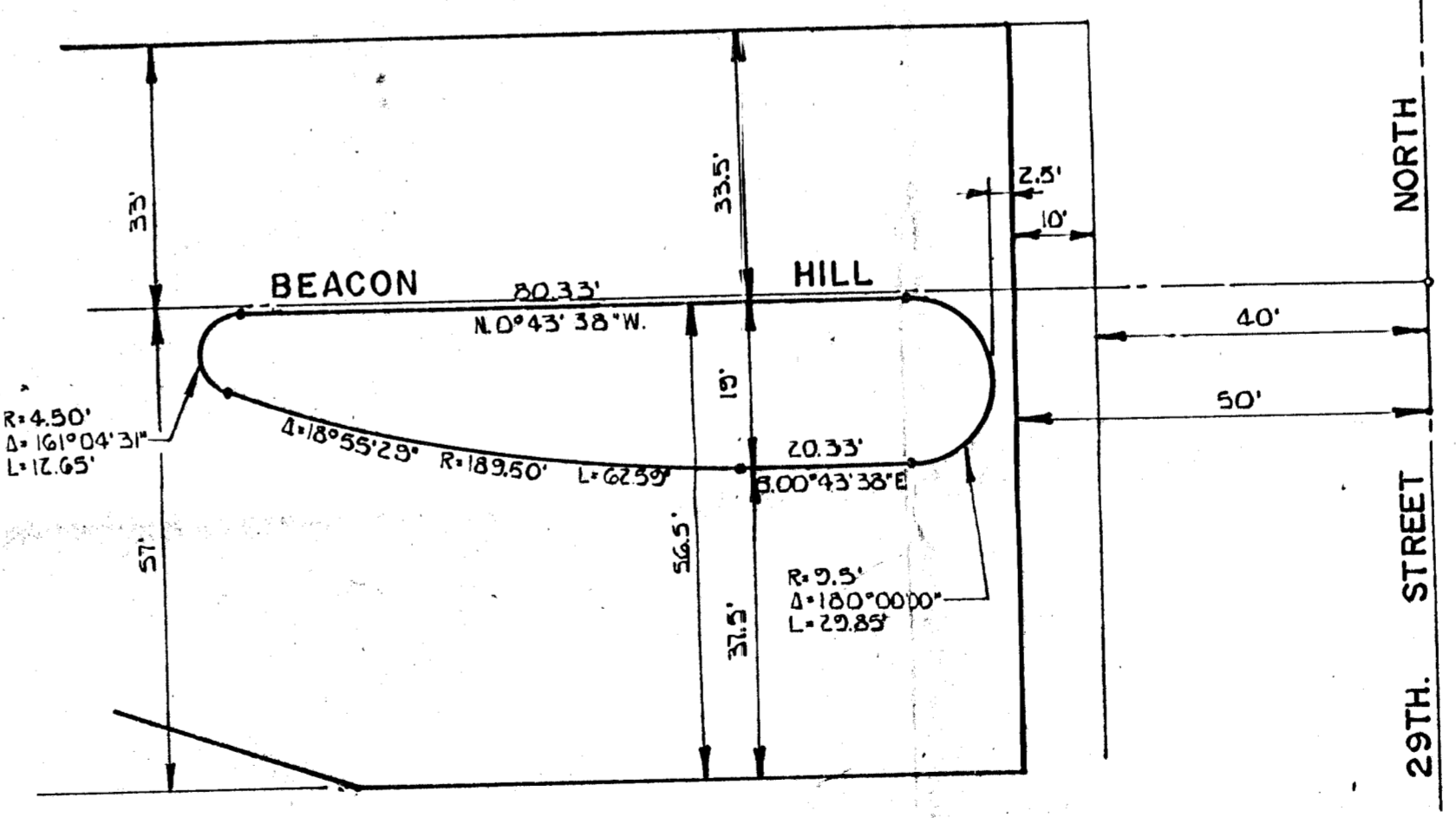
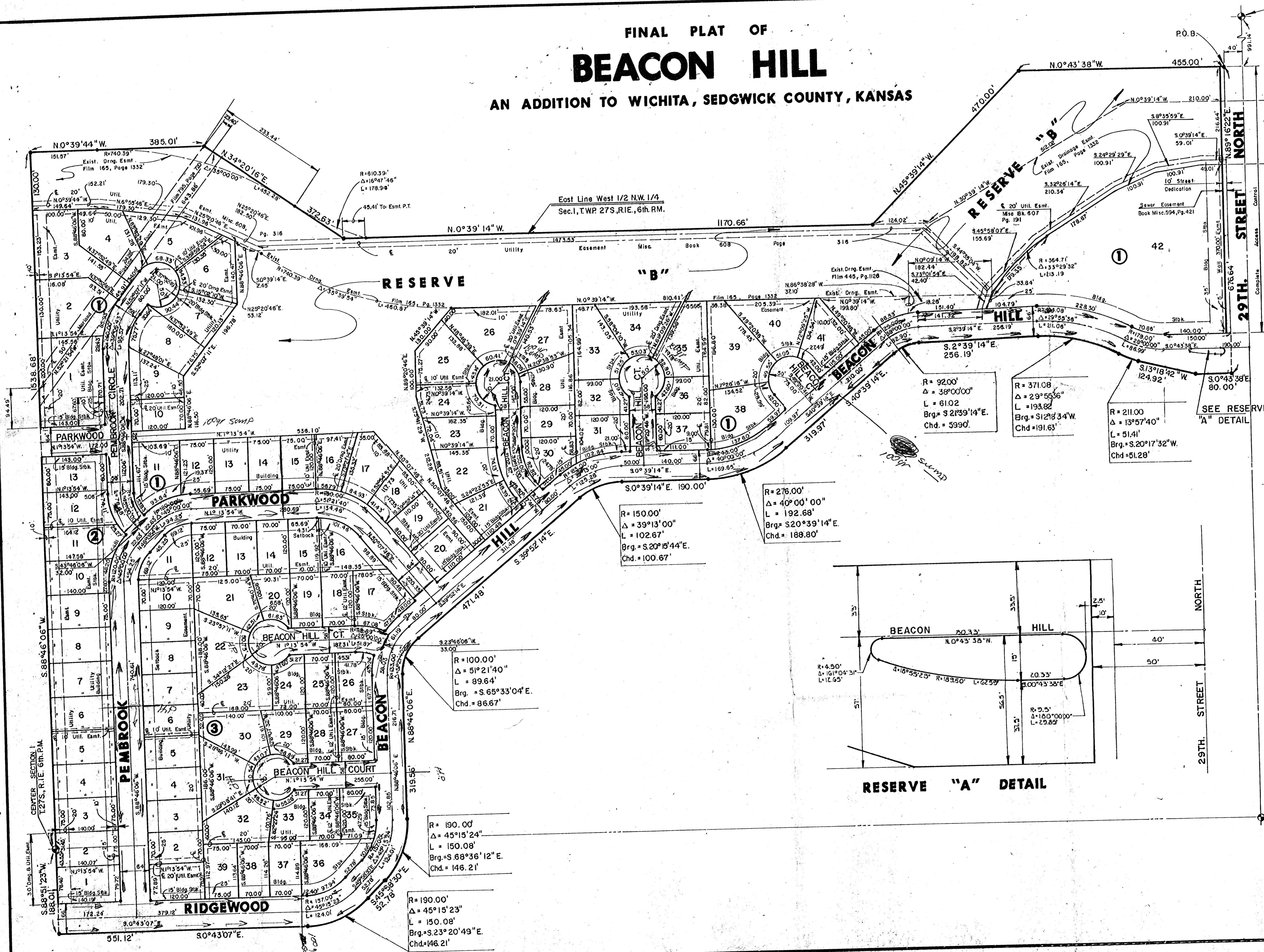
NW Cor., NW 1/4
Sec. 1, T.27 S., R.1 E.
6th. P.M.



Scale: 1" = 100'

LEGEND

• = Iron



SEE RESERVE "A" DETAIL

NW Cor., NE 1/4
Sec. 1, T.27 S., R.1 E.
6th. P.M.