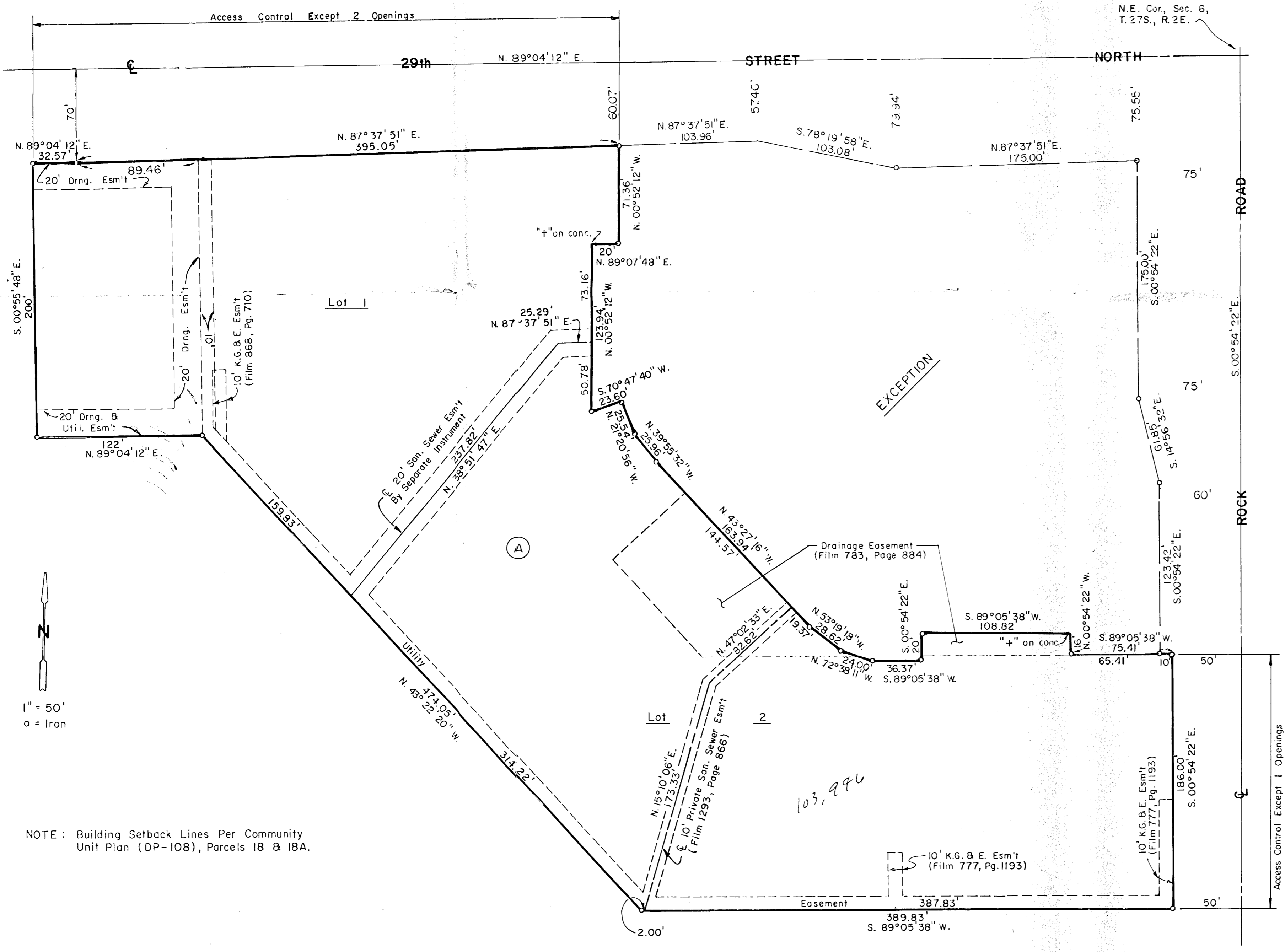


BEGGAN ADDITION

TO WICHITA, SEDGWICK COUNTY, KANSAS



STATE OF KANSAS, COUNTY OF SEDGWICK, SS:

I, Don C. Moehring II, a Registered Land Surveyor in said State and County, do hereby certify that I have surveyed and platted "BEGGAN ADDITION", Wichita, Sedgwick County, Kansas, into Lots and a Block, the same being accurately set forth on the accompanying plat and described as being a replat of Lot 2, Block 1, Jeff and Jay Addition to Wichita, Sedgwick County, Kansas, except therefrom a tract described as follows: Beginning at the N.E. Corner of Lot 2, Block 1, Jeff & Jay Addition to Wichita, Sedgwick County, Kansas; thence South along the East line of said Lot 2, and with an assumed bearing of S. 00°54'22" E., a distance of 175.00 feet; thence S. 14°56'32" E., a distance of 61.85 feet; thence S. 00°54'22" E., a distance of 123.42 feet; thence S. 89°05'38" W., a distance of 65.41 feet; thence N. 00°54'22" W., a distance of 16.00 feet; thence S. 89°05'38" W., a distance of 108.82 feet; thence S. 00°54'22" E., a distance of 20.00 feet; thence S. 89°05'38" W., a distance of 36.37 feet; thence N. 72°38'11" W., a distance of 24.00 feet; thence N. 53°19'18" W., a distance of 28.62 feet; thence N. 43°27'16" W., a distance of 163.94 feet; thence N. 39°55'32" W., a distance of 25.96 feet; thence N. 21°20'56" W., a distance of 25.54 feet; thence S. 70°47'40" W., a distance of 23.60 feet; thence N. 00°52'12" W., a distance of 123.94 feet; thence N. 89°07'48" E., a distance of 20.00 feet; thence N. 00°52'12" W., a distance of 71.36 feet; thence N. 87°37'51" E., a distance of 103.08 feet; thence N. 87°37'51" E., a distance of 175.00 feet to the point of beginning; AND ALSO a replat of Lot 1, Block 1, Jeff and Jay Third Addition, an Addition to Wichita, Sedgwick County, Kansas, except the West 23.0 feet thereof.

STATE OF KANSAS, COUNTY OF SEDGWICK, SS:

Be it remembered that this 22 day of February, 1993, before me, a Notary Public in and for said State and County, came The Travelers Insurance Company by Bernard B. O'Connell, Regional Vice President, on behalf of said Company, to me personally known to be the same person who executed the foregoing instrument of writing and duly acknowledged the execution of the same on behalf of and as the act and deed of said Company. In testimony whereof I have hereunto set my hand and affixed my notarial seal the day and year above written.

Terrie L. Lewis, Notary Public
Terrie L. Lewis

My Commission Expires 4-29-95
TERRIE L. LEWIS
Notary Public
April 29, 1995

This BEGGAN ADDITION, Wichita, Sedgwick County, Kansas, has been submitted to and approved by the Wichita-Sedgwick County Metropolitan Area Planning Commission.

Dated this 22 day of February, 1992

WICHITA-SEDGWICK COUNTY METROPOLITAN AREA PLANNING COMMISSION

L. D. Breckenridge, Jr., Chairman

Marvin S. Krout, Secretary

Don C. Moehring II
Don C. Moehring
Surveyor
KANSAS
REGISTERED
LAND SURVEYOR
LS-936

Know all men by these presents that we the undersigned, property owners of the land as above set forth in the Surveyor's certificate, have caused the same to be surveyed and platted into Lots and a Block, to be known as "BEGGAN ADDITION", Wichita, Sedgwick County, Kansas. Easements for drainage and for the construction and maintenance of public utilities, as indicated on the accompanying plat, are hereby granted. All abutter's rights of access to or from 29th Street North and Rock Road, over and across the North line of Lot 1, Block A, and also the East line of Lot 3, Block A, are hereby granted to the City of Wichita, provided however, that Lot 1, Block A, shall have access to 29th Street North at three (3) locations and Lot 3, Block A, shall have access to Rock Road at two (2) locations, to be determined by the City of Wichita Engineer. Building set-backs are per Community Unit Plan (DP-108) on file at the office of the Wichita-Sedgwick County Planning Department.

THE TRAVELERS INSURANCE COMPANY
Bernard B. O'Connell, Regional Vice President
Bernard B. O'Connell

This plat has been approved and all dedications shown hereon, if any, accepted by the City Council of the City of Wichita, Kansas, this 23 day of March, 1993.

F. M. Ojite
F. M. Ojite
Mayor

Pat Burnett, Deputy City Clerk
Pat Burnett

STATE OF KANSAS, COUNTY OF SEDGWICK, SS:

This is to certify that this instrument was filed for record in the Register of Deeds Office at _____ on the _____ day of _____, 1993.

_____, Register of Deeds
Pat Kettler

_____, Deputy
Ed Resa

Entered on Transfer record this _____ day of _____, 1993.

_____, County Clerk
Susan Crockett - Spoon