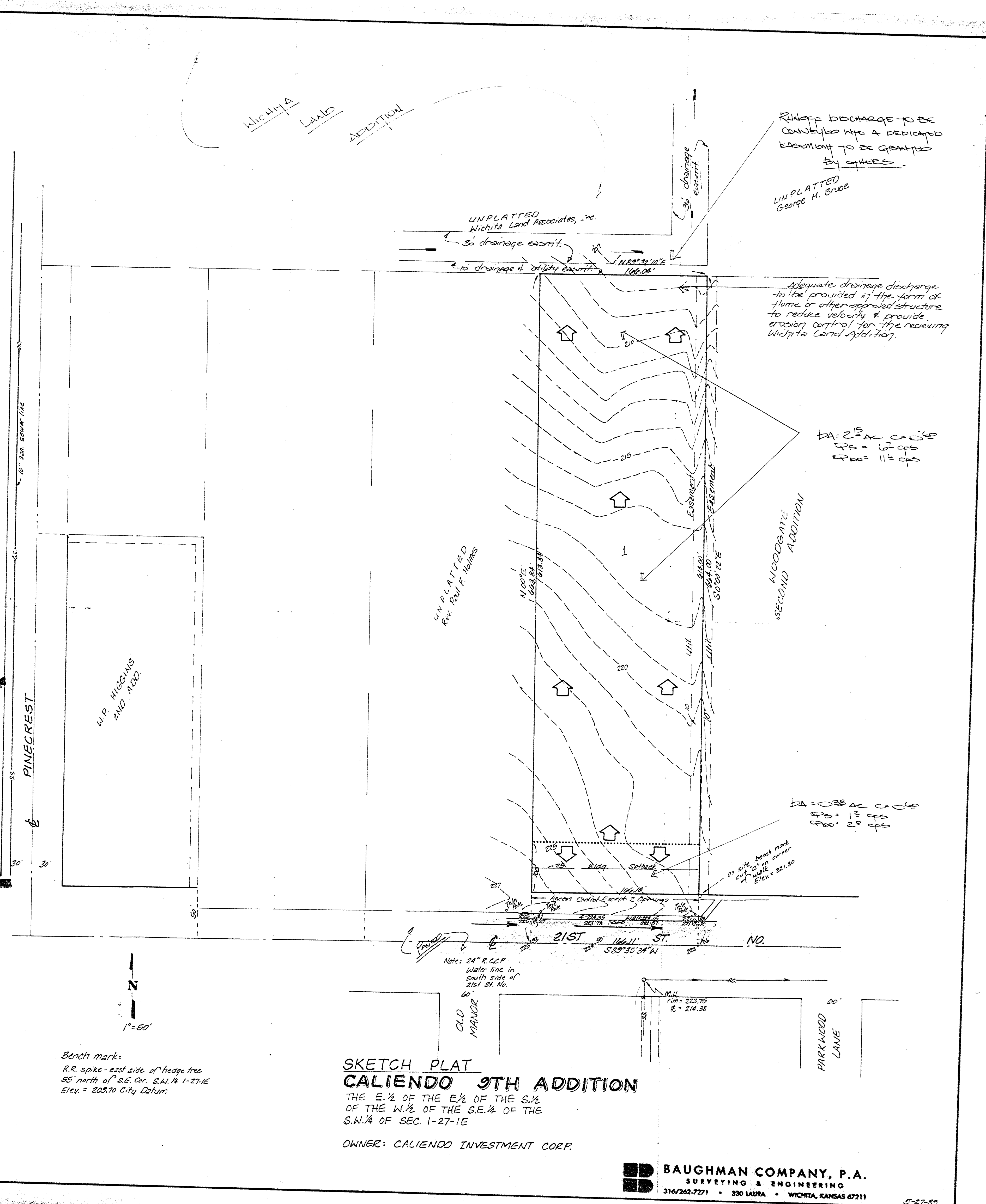


drainage plan

7-1-85
6-5-88



Bench mark:
R.R. spike - east side of hedge tree
55' north of S.E. Cor. S.W. 1/4 1-27-1E
Elev. = 203.70 City Datum

SKETCH PLAT
CALIENDO 9TH ADDITION
THE E. 1/2 OF THE E. 1/2 OF THE S. 1/2
OF THE W. 1/2 OF THE S.E. 1/4 OF THE
S.W. 1/4 OF SEC. 1-27-1E
OWNER: CALIENDO INVESTMENT CORP.

BAUGHMAN COMPANY, P.A.
SURVEYING & ENGINEERING
314/262-7271 • 330 LAURA • WICHITA, KANSAS 67211

5-27-89