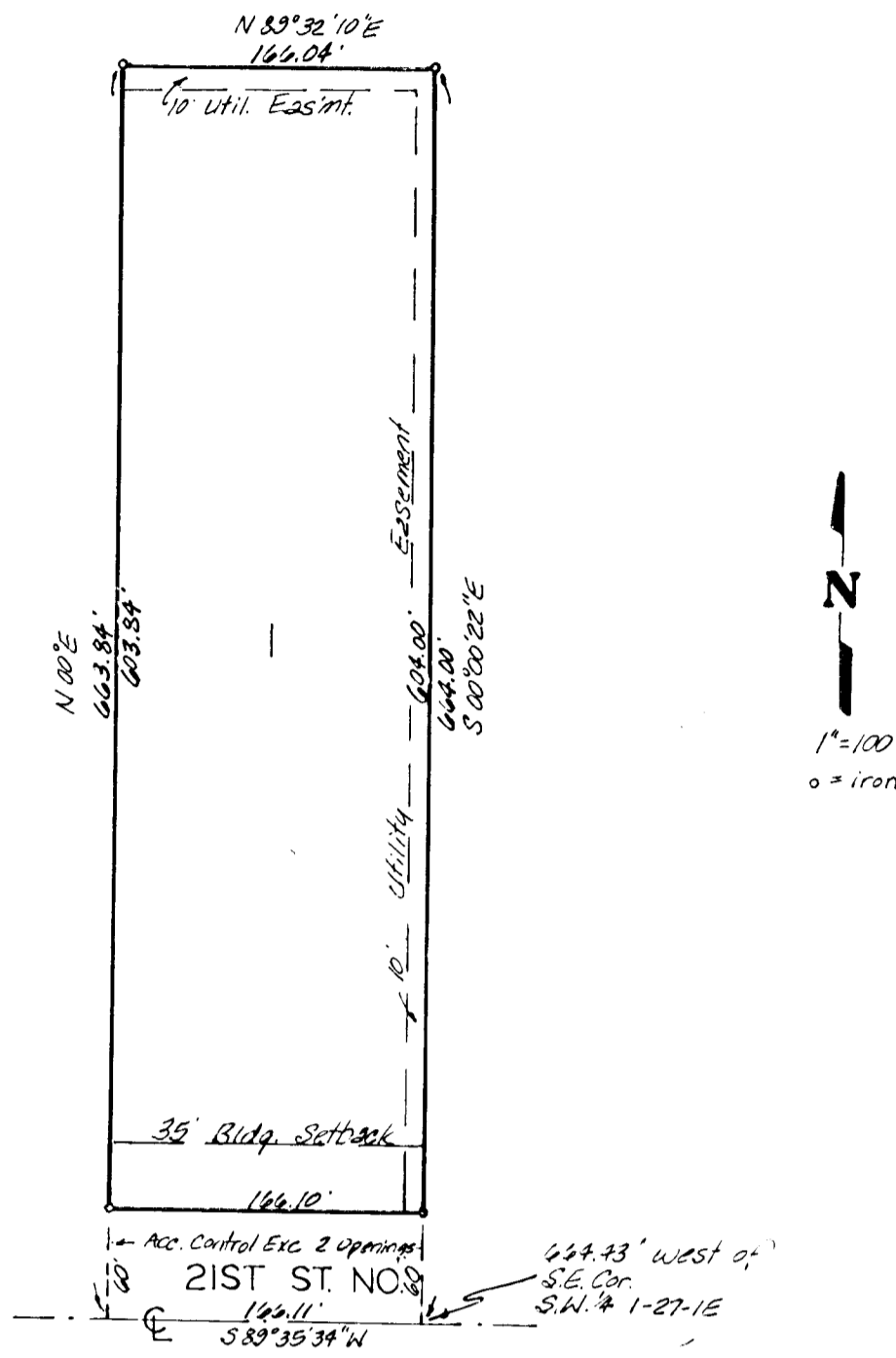


CALIENDO 9TH ADDITION

WICHITA, KANSAS



State of Kansas }
 Sedgwick County } S.S. We, Baughman Company, P.A.,
 Surveyors in aforesaid county and state do hereby
 certify that we have surveyed and plotted "CALIENDO
 9TH ADDITION," Wichita, Kansas, and that the accom-
 panying plat is a true and correct exhibit of the
 property surveyed described as the E. 1/2 of the E. 1/2
 of the S. 1/2 of the N. 1/2 of the S.E. 1/4 of the S.W. 1/4
 of Sec. 1, Twp. 27-S, R-1-E of the 6th P.M., Sedgwick
 County, Kansas.

10/25/83
 Date Baughman Company, P.A.
 William E. Baughman Surveyor

Know all men by these presents
 that we, the undersigned, have caused the land de-
 scribed in the surveyors certificate to be platted
 into a lot and street, to be known as "CALIENDO
 9TH ADDITION," Wichita, Kansas. The street is
 hereby dedicated to and for the use of the public.
 The easements are hereby granted as indicated for the
 construction and maintenance of public utilities.
 All abutters rights of access to or from 21st St. No.
 over and across the south line of Lot 1 are hereby
 granted to the City of Wichita, provided however
 that Lot 1 shall have access to 21st St. No. at 2
 points as shall be determined by the City Engineer
 of the City of Wichita, Kansas.

Caliendo Investment Corp.
 Richard Caliendo President

State of Kansas }
 Sedgwick County } S.S. The foregoing instrument was
 acknowledged before me this 15th day of November
 1983, by Richard Caliendo, President of
 Caliendo Investment Corp. on behalf of the
 corporation.

Mark A. Lewis Notary Public
 My App. Expires 1984 Mark A. Lewis

Entered on transfer record
 this ___ day of ___ 198__
 Dorothy K. White County Clerk

State of Kansas }
 Sedgwick County } S.S. This is to certify that this
 plat has been filed for record in the office of the
 Register of Deeds this ___ day of ___ 198__
 at ___ o'clock ___ M.; and is duly recorded.

Bette E. Meers Register of Deeds
 Pat Kettler Deputy

This plat of "CALIENDO 9TH
 ADDITION," Wichita, Kansas, has been submitted to
 and approved by the Wichita-Sedgwick County
 Metropolitan Area Planning Commission, Wichita,
 Kansas. Dated this 14th day of July 1983.

Wichita-Sedgwick County Metropolitan Area Planning
 Commission



David Bayouth Chairman
 Robert A. Lakin Secretary

This plat approved and all dedi-
 cations shown hereon accepted by the Board of
 Commissioners of the City of Wichita, Kansas, this
 ___ day of ___ 198__.

Marjorie Wright Mayor
 Donald G. Bivick City Clerk

This plat approved and all dedi-
 cations shown hereon accepted by the Board of
 Commissioners of Sedgwick County, Kansas, this
 ___ day of ___ 198__.

Jack Spratt Chairman
 Donald E. Gragg Commissioner
 Tom Scott Commissioner
 Dorothy K. White County Clerk