

BLASI ADDITION

WICHITA, SEDGWICK COUNTY, KANSAS

State of Kansas } s.s. We, Baughman Company, P.A., Surveyors
Sedgwick County } in aforesaid county and state do hereby certify that we have surveyed
and platted "BLASI ADDITION," Wichita, Sedgwick County, Kansas,
and that the accompanying plat is a true and correct exhibit of the
property surveyed described as and being a replat of Lots 81 and
83, Block 8, Sunny Side Addition to the City of Wichita, Kansas.
All being situated in the NE 1/4 of Sec. 27, Twp. 27-S,
R-1-E of the 6th P.M., Sedgwick County, Kansas.

6/4/90
Date

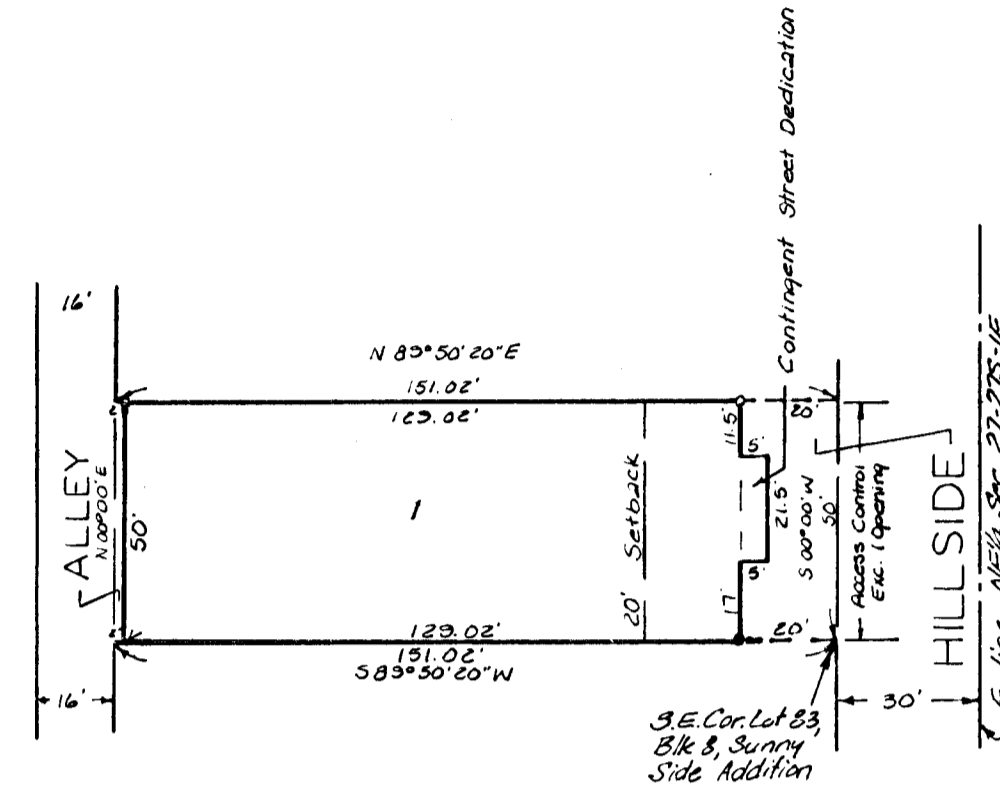
Baughman Company, P.A.



Gregory F. Severns Surveyor
Gregory F. Severns



1" = 40'
O = iron
• = nail
V = chiselled notch



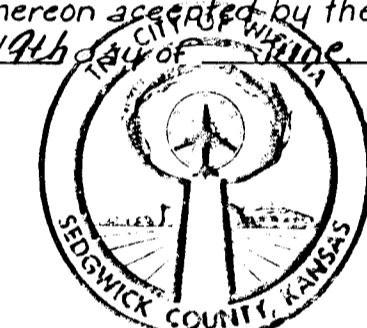
Know all men by these presents that we the undersigned, have caused the land described in the surveyors certificate to be platted into lots, street, and alley to be known as "BLASI ADDITION," Wichita, Sedgwick County, Kansas. The street and alley are hereby dedicated to and for the use of the public. All abutters rights of access to or from Hillside over and across the east line of Lot 1 are hereby granted to the City of Wichita, provided however that Lot 1 shall have one point of access to Hillside as shall be determined by the City Engineer of Wichita, Kansas. The contingent street dedication is hereby contingently dedicated to the public to take effect upon removal of the structure, and this contingency shall not be construed to require such removal; said contingent dedication is binding on future owners and assigns.

This plat of "BLASI ADDITION," Wichita, Sedgwick County, Kansas, has been submitted to and approved by the Wichita, Sedgwick County Metropolitan Area Planning Commission, Wichita, Kansas. Dated this 1st day of March, 1930. Wichita-Sedgwick County Metropolitan Area Planning Commission

George B. Sherrin Acting Chairman
Marvin S. Trout Secretary



This plat approved and all dedications shown hereon accepted by the City Council of the City of Wichita, Kansas this 14th day of March, 1930.



W. L. Good Mayor
Pat Burnett Deputy City Clerk

Entered on transfer record this ___ day of ___, 1930.

County Clerk

Donald T. Blasi Eileen M. Blasi

State of Kansas } s.s. This is to certify that this plat has been filed for record in the office of the Register of Deeds, this ___ day of ___, 1930, ___ o'clock, ___ M., and is duly recorded.

Register of Deeds
Deputy

State of Kansas } s.s. The foregoing instrument was acknowledged before me this 4th day of June, 1930, by Donald T. and Eileen M. Blasi, husband and wife.

Mark A. Savoy Notary Public
My Appt. Exp. 16 May 1932

We, the undersigned, holders of a mortgage on a portion of the above described property do hereby consent to this plat of "BLASI ADDITION," Wichita, Sedgwick County, Kansas.

Bank III
I. Fred Muenchraeth Vice-President

State of Kansas } s.s. The foregoing instrument was acknowledged before me this 4 day of June, 1930, by I. Fred Muenchraeth Vice-President Bank III on behalf of the corporation.

M. Jean Muth Notary Public
My Appt. Exp. 1-6-32

