

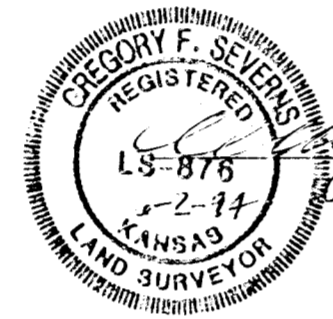
RICHARD BISHOP ADDITION

WICHITA, SEDGWICK COUNTY, KANSAS

State of Kansas)
Sedgwick County) SS We, Baughman Company, P.A., Surveyors in
aforesaid county and state do hereby certify that we have surveyed and
platted "RICHARD BISHOP ADDITION", Wichita, Sedgwick County, Kansas and
that the accompanying plat is a true and correct exhibit of the property
surveyed, described as beginning at a point 411.5 feet west of the N.E.
corner of the SE 1/4 of Sec. 1, Twp. 28S, R-1-W, of the 6th P.M., Sedgwick
County, Kansas; thence south 135 feet; thence west 100 feet; thence north
135 feet; thence east 100 feet to the point of beginning.

Existing public easements and dedications being vacated by
virtue of KSA 12-512(b).

Baughman Company, P.A.



Gregory F. Severns Surveyor
Gregory F. Severns

Know all men by these presents that we, the undersigned, have caused the
land described in the surveyors certificate to be platted into a lot and a
street to be known as "RICHARD BISHOP ADDITION", Wichita, Sedgwick County,
Kansas. The utility easement is hereby granted as indicated for the con-
struction and maintenance of all public utilities. The street is hereby dedicated
to and for the use of the public.

Richard L. Bishop
Richard L. Bishop

State of Kansas)
Sedgwick County) SS The foregoing instrument was acknowledged before
me, this 3rd day of June, 1994, by Richard L. Bishop,
a single person.

Mildred E. Franz Notary Public
MILDRED E. FRANZ

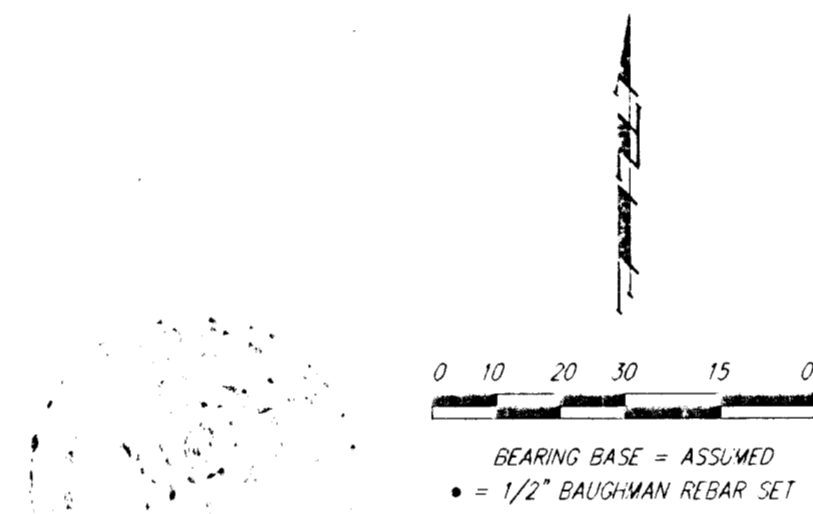
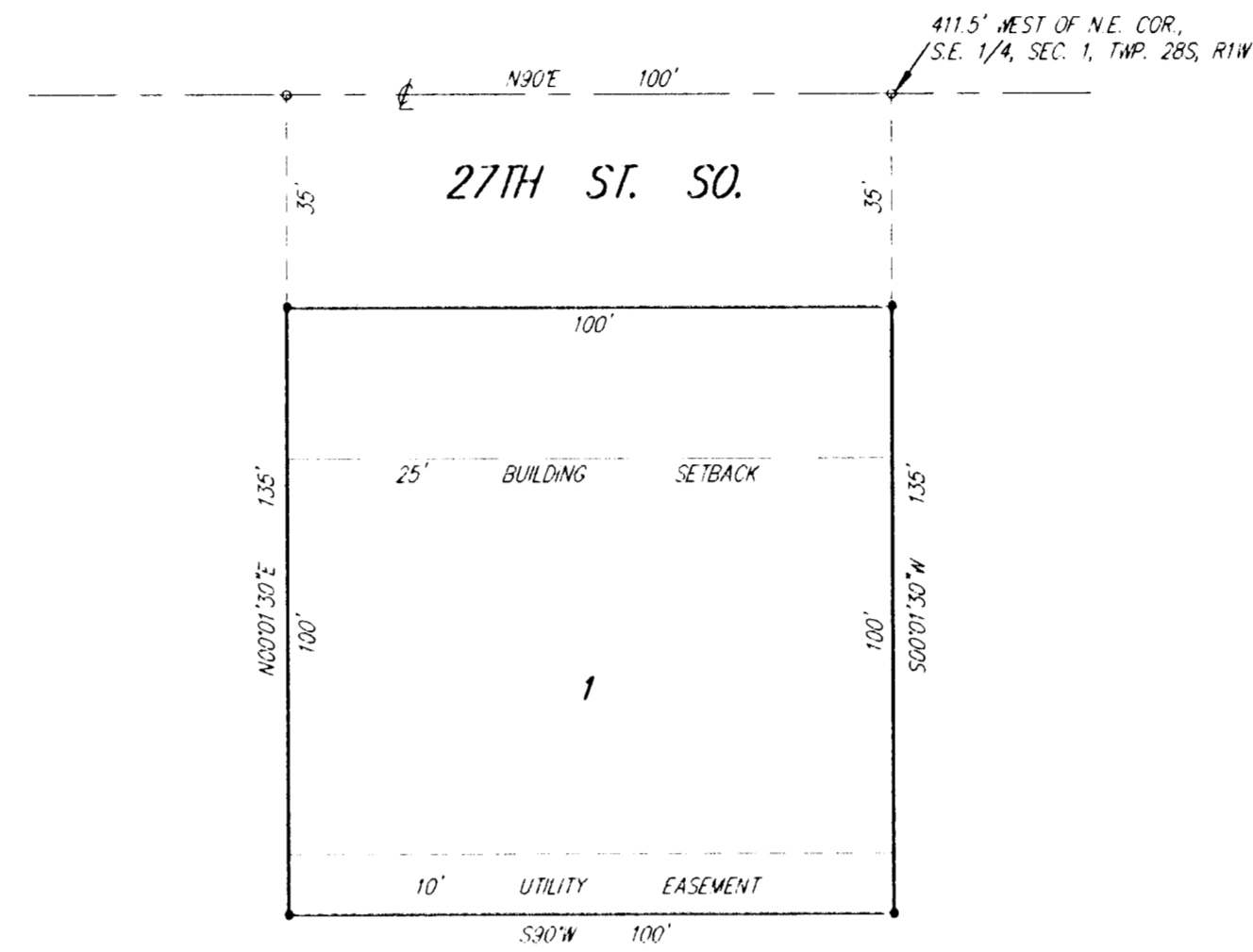
My App't Exp. 2-3-95

This plat of "RICHARD BISHOP ADDITION",
Wichita, Sedgwick County, Kansas, has been submitted to and approved by
the Wichita-Sedgwick County Metropolitan Area Planning Commission, Wichita,
Kansas.
Dated this 9th day of May, 1994.
Wichita-Sedgwick County Metropolitan Area Planning Commission



James D. Miner Chairman
James D. Miner

Marvin S. Krout Secretary
Marvin S. Krout



This plat approved and all dedications shown
hereon accepted by the City Council of the City of Wichita, Kansas dated
this 28 day of June, 1994.

Elma Broadfoot Mayor
Elma Broadfoot
Pat Burnett Deputy City Clerk
Pat Burnett

Entered on transfer record this _____ day of _____, 1994.

Susan E. Crockett-Spoon County Clerk

State of Kansas)
Sedgwick County) SS This is to certify that this plat has been filed
for record in the office of the Register of Deeds, this _____ day of _____,
1994, at _____ o'clock _____ M.; and is duly recorded.

Pat Kettler Register of Deeds

Ed Resa Deputy