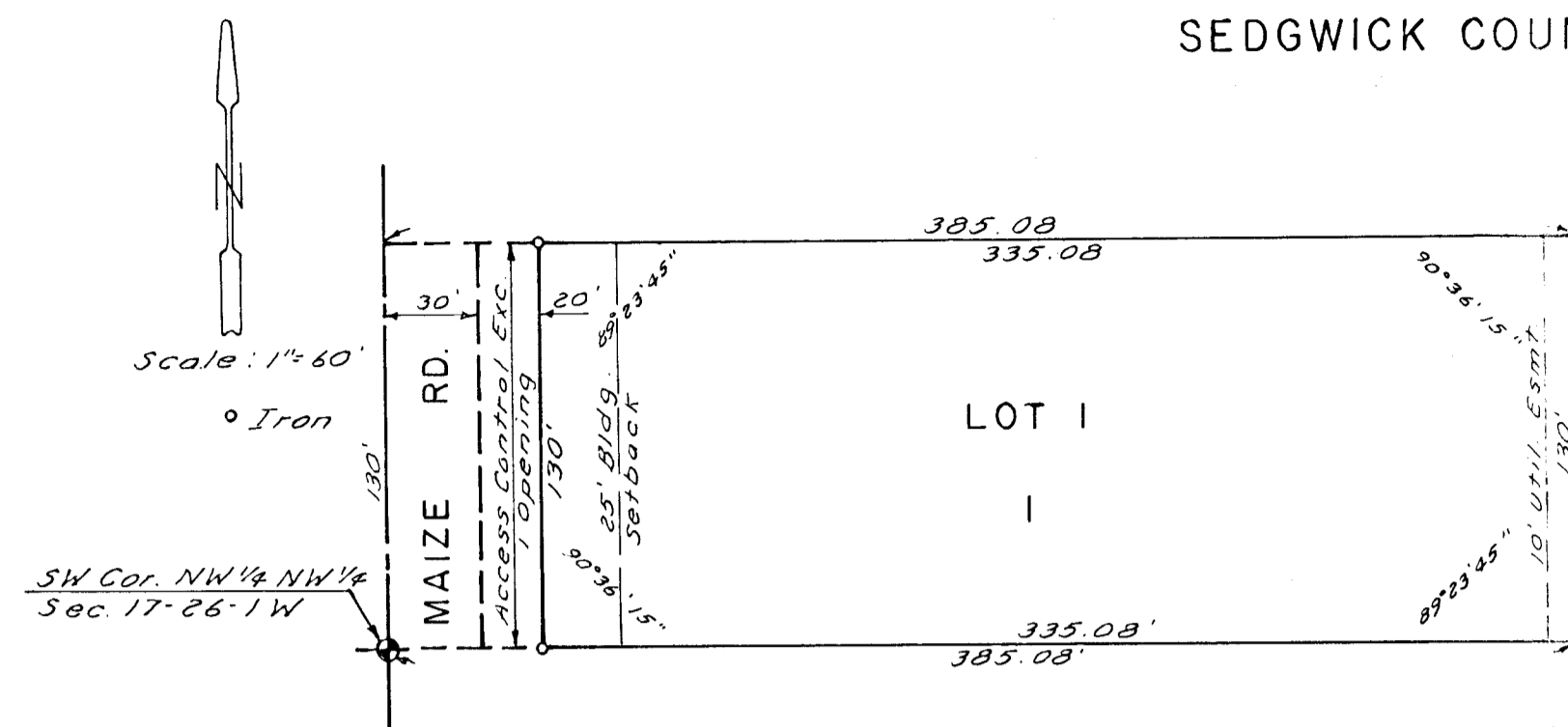


# BILL BAILEY ADDITION

SEDGWICK COUNTY, KANSAS



State of Kansas } S.S. We, Baughman Company, P.A.,  
 Sedgwick County }  
 Surveyors in aforesaid county and state, do hereby  
 certify that we have surveyed and platted "BILL  
 BAILEY ADDITION", Sedgwick County, Kansas, and  
 that the accompanying plat is a true and correct  
 exhibit of the property surveyed, described  
 as the south 130 feet of the west 385.08 feet  
 of the NW 1/4 of the NW 1/4 of Section 17, T26S, R1W  
 of the 6th P.M., Sedgwick County, Kansas.

Date \_\_\_\_\_ Baughman Company, P.A.

John E. Lundblade Surveyor

Know, all men by these presents that  
 we, the undersigned, have caused the land  
 described in the surveyors certificate to be  
 platted into a lot, block and street to be  
 known as "BILL BAILEY ADDITION", Sedgwick  
 County, Kansas. The easement is hereby granted  
 as indicated for the construction and main-  
 tenance of public utilities. The street is here-  
 by dedicated to and for the use of the  
 public. All abutters rights of access to Maize  
 Road all hereby granted to the appropriate  
 governing body, except, however, that Lot I  
 shall have access to Maize Road at one  
 location, said location to be determined by  
 the appropriate governing body.

Bill Bailey Opal L. Bailey

State of Kansas } S.S. The foregoing instrument  
 Sedgwick County }  
 was acknowledged before me this \_\_\_\_\_ day  
 of \_\_\_\_\_, 1980, by Bill Bailey and  
 Opal L. Bailey, his wife. I testimony whereof,  
 I have hereunto set my hand affixed my  
 notarial seal the day and year above written.

\_\_\_\_\_  
 Notary Public  
 My Commission Expires \_\_\_\_\_

This plat of "BILL BAILEY ADDITION",  
 Sedgwick County, Kansas, has been submitted  
 to and approved by the Wichita-Sedgwick  
 County Metropolitan Area Planning Com-  
 mission, Wichita, Kansas. Dated this \_\_\_\_\_  
 day of \_\_\_\_\_, 1980.

Wichita-Sedgwick County Metropolitan  
 Area Planning Commission

William J. Goebel Chairman

Robert A. Lakin Secretary

This plat approved and all dedications  
 shown hereon accepted by the Board of County  
 Commissioners, Sedgwick County, Kansas,  
 this \_\_\_\_\_ day of \_\_\_\_\_, 1980.

Tam Scott Chairman

Everett Patrick Commissioner

Donald E. Gragg Commissioner

Dorothy R. White County Clerk

Entered on transfer record this \_\_\_\_\_  
 day of \_\_\_\_\_, 1980.

Dorothy R. White County Clerk

State of Kansas } S.S. This is to certify that  
 Sedgwick County }  
 this plat has been filed for record in the  
 Office of the Register of Deeds this \_\_\_\_\_  
 day of \_\_\_\_\_, 1980, at \_\_\_\_\_ o'clock \_\_\_\_\_ M.,  
 and is duly recorded.

Belle K. McCurt Register of Deeds

Pat Kettler Deputy