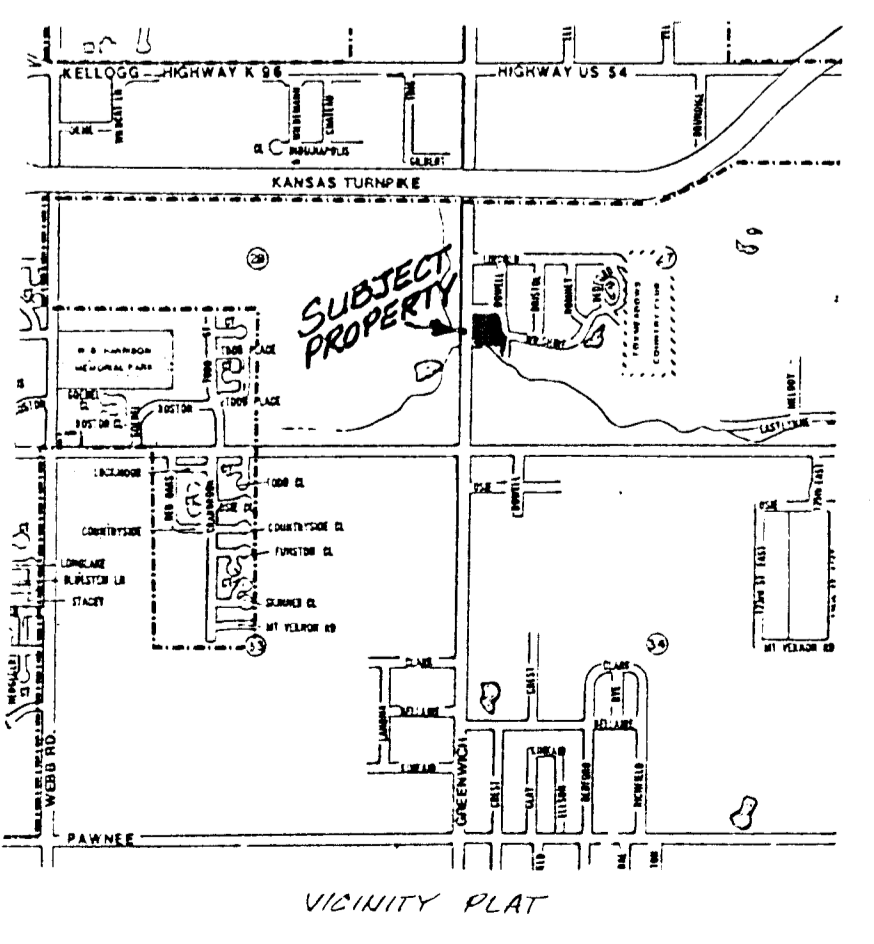


PRELIMINARY PLAT
BALL ADDITION

A TRACT OF LAND IN THE
SW 1/4 OF SEC 27-27-2E

OWNER: DWIGHT WILLIAMS

CONTRACT PURCHASER: MIKE BALL



Bench mark:
"W" cut on NE corner of yard post
concrete box culvert, approx. 100'
south of SW corner of subject
plat
Elevation = 1334.44 M.S.L.