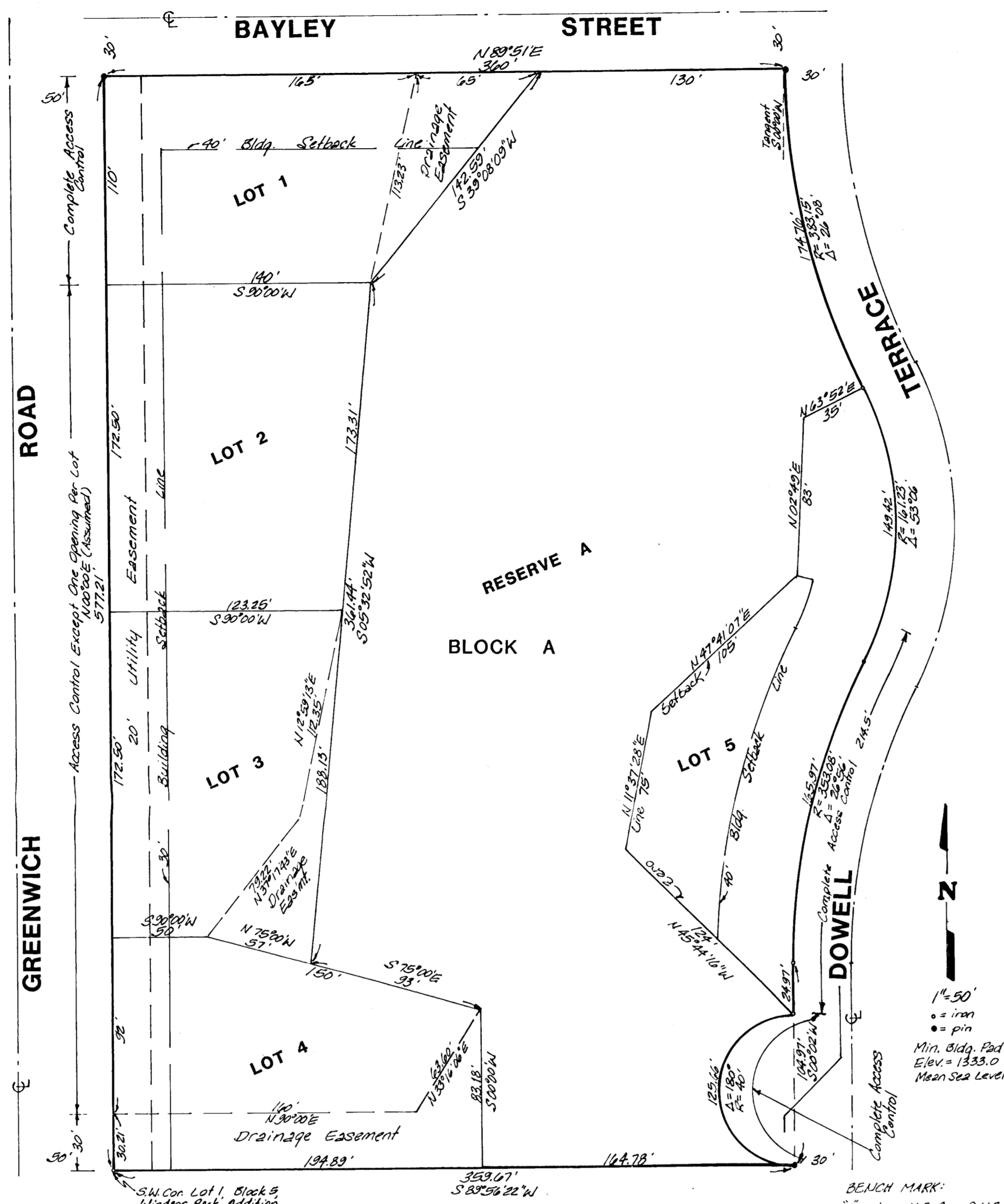


BALL ADDITION

SEDGWICK COUNTY, KANSAS



State of Kansas } s.s. We, Baughman Company P.A., Surveyors in aforesaid county and state do hereby certify that we have surveyed and platted "BALL ADDITION," Sedgwick County, Kansas, and that the accompanying plat is a true and correct exhibit of the property surveyed described as a tract in the N. 1/2 of the S.W. 1/4 of Sec. 27, Twp. 27-S, R. 2-E of the 6th P.M., Sedgwick County, Kansas, beginning at a point on the south line of said N. 1/2 of said S.W. 1/4, 50 feet east of the S.W. corner of said N. 1/2 of said S.W. 1/4; thence east on said south line of said N. 1/2, 359.67 feet to the west line of Dowell Terrace; thence north along the west line of said Dowell Terrace, 104.97 feet to the P.C. of a curve; thence northeasterly on a curve to the right having a radius of 353.08 feet and a deflection angle of 26°56', a distance of 165.97 feet to the point of reverse curvature of said curve; thence northerly on a curve to the left having a radius of 161.23 feet and a deflection angle of 53°06', a distance of 149.42 feet to the point of reverse curvature of said curve; thence northwesterly on a curve to the right having a radius of 383.19 feet and a deflection angle of 26°08', a distance of 174.76 feet to the south line of Bayley Street; thence west along the south line of said Bayley Street, 300 feet to a point 90 feet east of the west line of said N. 1/2 of said S.W. 1/4; thence south 577.21 feet more or less to the point of beginning; a part of which is platted as Lot 1, Block 5, Windsor Park and a portion formerly platted as Dedicated Dowell, as shown on Recorded Plat of Windsor Park, Sedgwick County, Kansas. Previously platted easements are hereby vacated by virtue of K.S.A. 12-512(b).

May 23, 1988
Date

Baughman Company P.A.
Surveyor

Chad E. Spang
Gregory F. Stevens

Know all men by these presents that we, the undersigned, have caused the land described in the surveyors certificate to be platted into lots, a block, a reserve, and a street to be known as "BALL ADDITION," Sedgwick County, Kansas. The utility easement is hereby granted as indicated for the construction and maintenance of all public utilities. The street is hereby dedicated to and for the use of the public. All abutters rights of access to or from Greenwich Road over and across the west line of Lots 1, 2, 3, and 4, except the south 30 feet of Lot 4, and to or from Dowell Terrace over and across the south 214.5 feet (as measured along the east line) of the east line of Lot 5 and the south 123.64 feet (as measured along the centerline) of the east line of Reserve A, are hereby granted to the appropriate governing body, provided however that Lots 2, 3, and 4 shall have access to Greenwich Road at one opening per lot as shall be determined by the appropriate engineer. The minimum building pad elevation for all lots shall be 1333.0 Mean Sea Level. Reserve A, as indicated, is hereby established for the owners of Lots 1, 2, 3, 4, and 5, Ball Addition, for open space and drainage purposes in accordance with the restrictive covenants established by the Declaration of Landowners Association Agreement. Reserve A is to be owned and maintained by said Landowners Association. Drainage easements are hereby granted as indicated for drainage purposes.

Dwight J. Williams
Elizabeth M. Williams

State of _____ } s.s. The foregoing instrument acknowledged before me this 20th day of May, 1988, by Dwight J. Williams and Elizabeth M. Williams, husband and wife.

Notary Public
Dance M. Herrmann

My Appt. Exp. _____

This plat of "BALL ADDITION," Sedgwick County, Kansas, has been submitted to and approved by the Wichita-Sedgwick County Metropolitan Area Planning Commission, Wichita, Kansas.

Dated this 14th day of April, 1988.

Wichita-Sedgwick County Metropolitan Area Planning Commission

Chairman
Elton Parsons

Secretary
Martin S. Kroat

This plat approved and all dedications shown hereon accepted by the City Council of the City of Wichita, Kansas, this _____ day of _____, 1988.

Mayor
Sheldon Kamen

Deputy City Clerk
Dale E. Rea

This plat approved and all dedications shown hereon accepted by the Board of Commissioners, Sedgwick County, Kansas, this _____ day of _____, 1988.

Chairman
Mark F. Schroeder

Chairman Pro Tem
Billy G. McCray

Commissioner
David Bayouth

Commissioner
Tom Scott

Commissioner
Bernard A. Henlyen

County Clerk
Don Wright

Entered on transfer record this _____ day of _____, 1988.

County Clerk
Don Wright

State of Kansas } s.s. This is to certify that this plat Sedgwick County } s.s. This is to certify that this plat has been filed for record in the office of the Register of Deeds this _____ day of _____, 1988, at _____ o'clock _____ M; and is duly recorded.

Register of Deeds
Pat Kettler

Deputy
Ed Reza

We, the undersigned, holders of a mortgage on the above described property do hereby consent to this plat of "BALL ADDITION," Sedgwick County, Kansas.

Kansas State Bank and Trust Company
Wm. Randall Summers
1/1/86

State of Kansas } s.s. The foregoing instrument acknowledged before me this _____ day of _____, 1988, by _____ of Kansas State Bank and Trust Company, on behalf of the bank.

Notary Public
Rebecca K. Jule

My Appt. Exp. 12.31.91