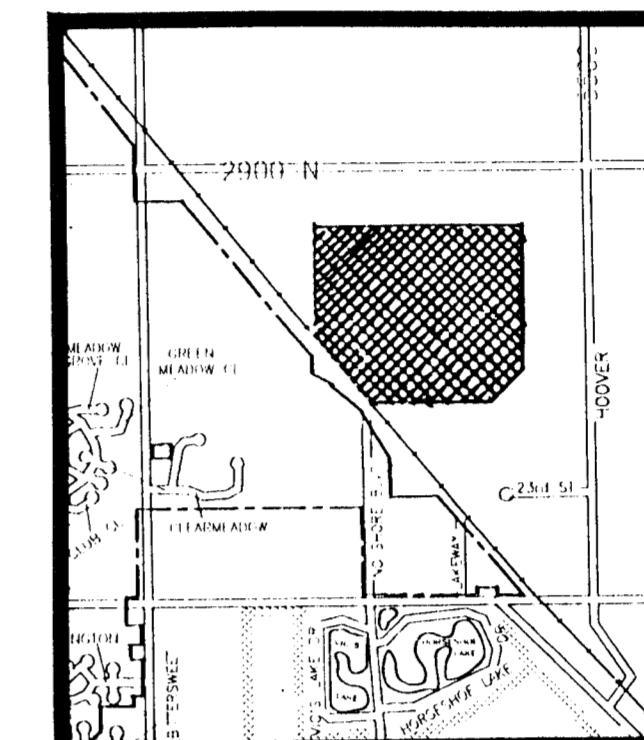


LIMITS OF PLAT

NOTES

1. RESERVES A, C, D, E ARE RESERVED FOR OPEN SPACE, ENTRY MONUMENTS, LIGHTING, SCREENING WALLS, LANDSCAPING, IRRIGATION AND UTILITIES CONFINED BY EASEMENTS.
2. RESERVE B IS RESERVED FOR OPEN SPACE, LANDSCAPING, IRRIGATION, ENTRY MONUMENTS, AND UTILITIES CONFINED BY EASEMENTS.
3. DRAINAGE CONCEPT AND TOPOGRAPHY WERE PREPARED BY PROFESSIONAL ENGINEERING CONSULTANTS, INC. BENCHMARK INFORMATION TO BE SUPPLIED BY PEC.
4. SITE PROPOSED TO BE ANNEXED TO CITY AND SERVED WITH WATER AND SEWER.
5. SEWER MAIN IS UNDER DESIGN.
6. PAVING PETITION OF NORTH SHORE BLVD. RECENTLY FILED.
7. RESERVE F IS RESERVED FOR LAKE, DRAINAGE IMPROVEMENTS, AND RECREATION.

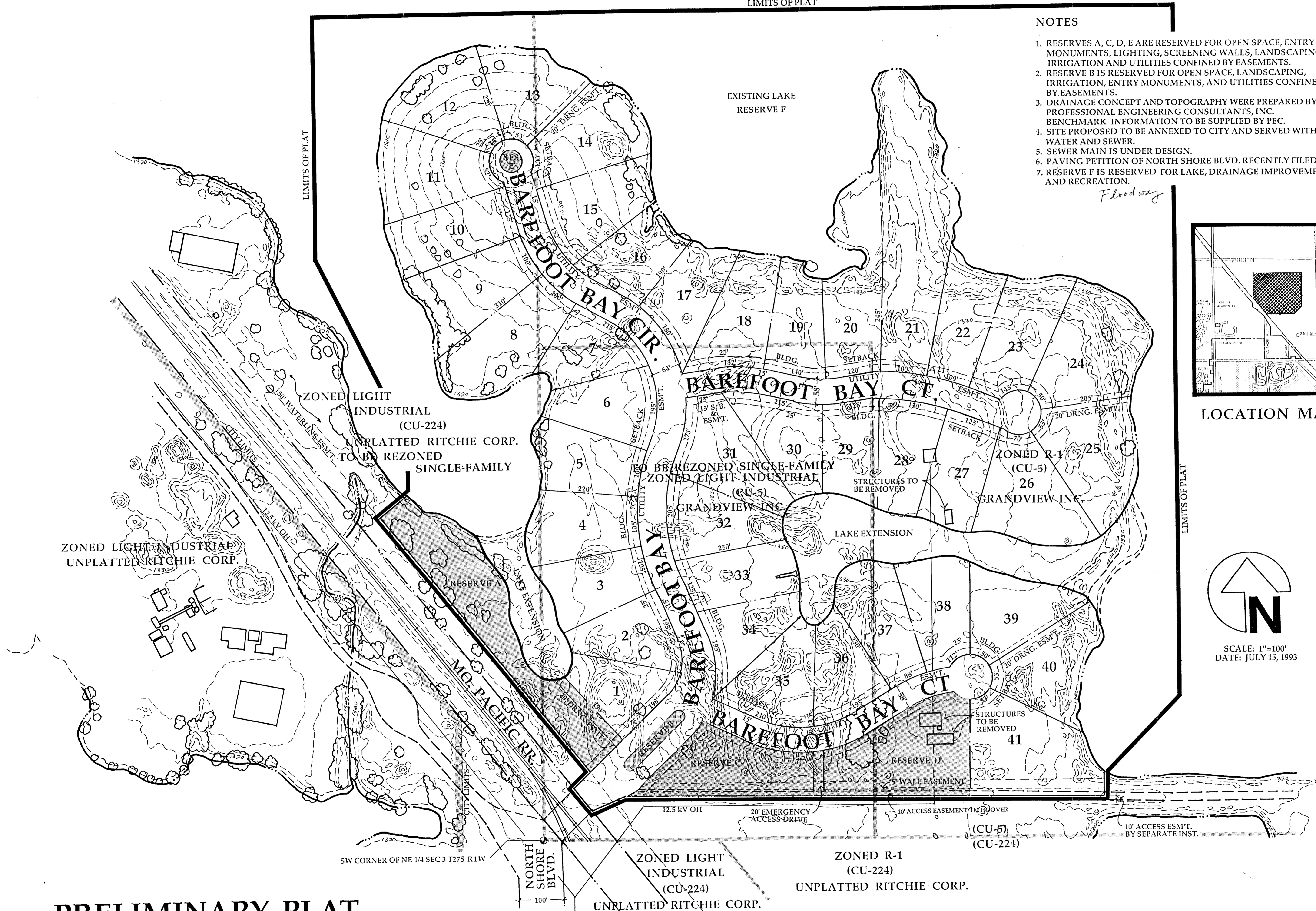
Flood way



LOCATION MAP



SCALE: 1"=100'
DATE: JULY 15, 1993



PRELIMINARY PLAT BAREFOOT BAY

OWNER: RITCHIE ASSOCIATES 8100 E. 2ND NO. BLDG. 1000 WICHITA, KANSAS 67226 PH. (316) 684-7300



BILL G. YUNG DESIGN
 WICHITA, KS 67220
 4812 E. 29TH STREET NORTH
 316-683-5567

DATE JULY 16, 1995
 REV. OCTOBER 8, 1993

SHEET TITLE PRELIMINARY PLAT

PROJECT BAREFOOT BAY

SHEET OF