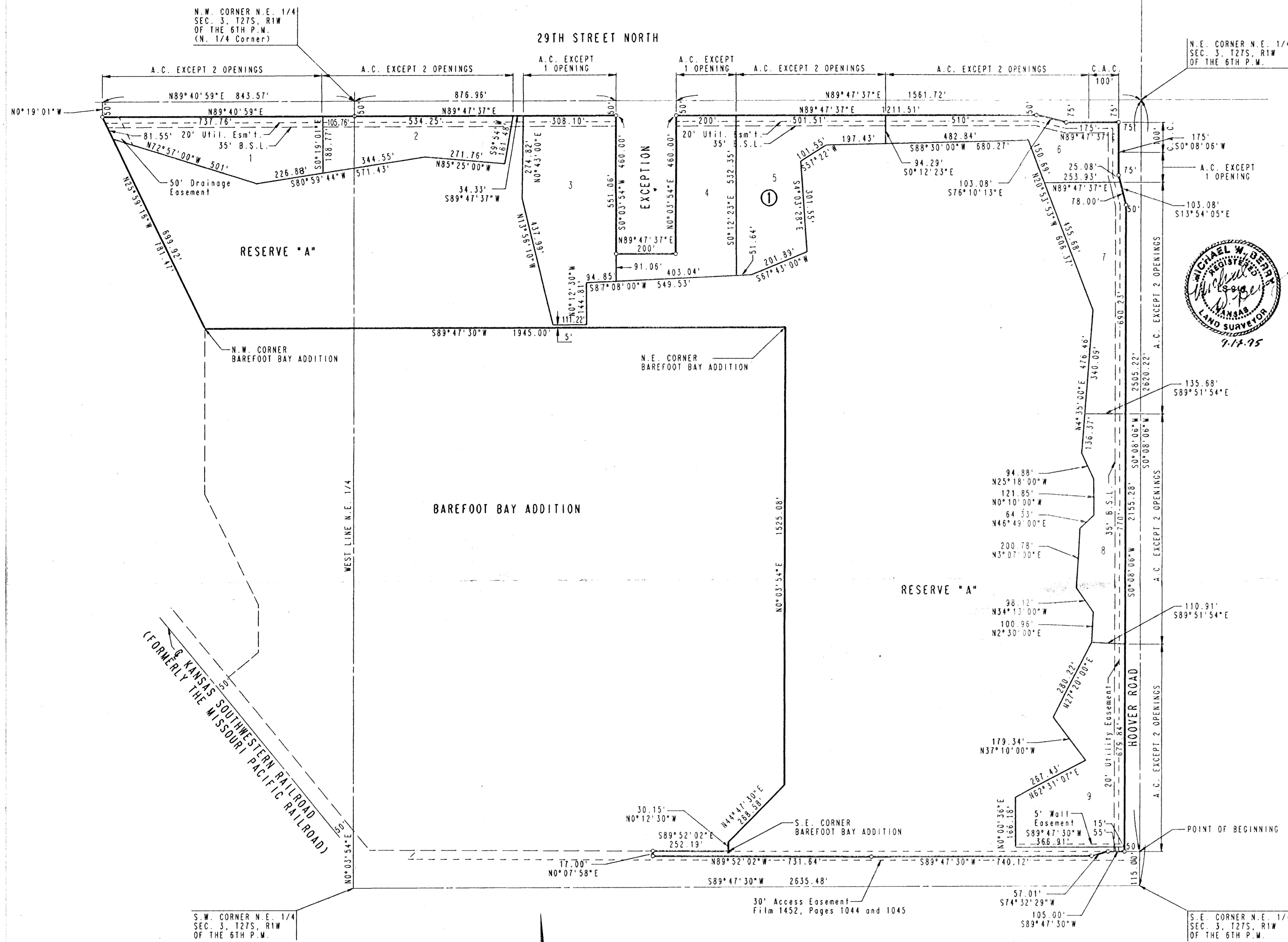


BAREFOOT BAY 2ND ADDITION TO WICHITA, SEDGWICK COUNTY, KANSAS



STATE OF KANSAS)
COUNTY OF SEDGWICK) SS

STATE OF KANSAS)
COUNTY OF SEDGWICK) SS

I, MICHAEL W. BERRY, A REGISTERED LAND SURVEYOR IN AFORESAID STATE AND COUNTY, DO HEREBY CERTIFY THAT ON THIS 15th DAY OF September, 1995, I HAVE CAUSED TO BE SURVEYED AND PLATTED BAREFOOT BAY 2ND ADDITION TO WICHITA, SEDGWICK COUNTY, KANSAS, INTO LOTS, A BLOCK, STREETS, AND A RESERVE, THE SAME BEING A TRACT OF LAND IN THE NORTH ONE-HALF SECTION 3, TOWNSHIP 27 SOUTH, RANGE 1 WEST OF THE 6TH P.M. DESCRIBED AS FOLLOWS:

BE IT REMEMBERED ON THIS 15th DAY OF September, 1995, BEFORE ME, A NOTARY PUBLIC IN AFORESAID STATE AND COUNTY, CAME JACK D. RITCHIE, VICE-PRESIDENT OF BAREFOOT BAY DEVELOPMENT, INC. TO ME PERSONALLY KNOWN TO BE THE SAME PERSON WHO EXECUTED THE FOREGOING INSTRUMENT OF WRITING AND DULY ACKNOWLEDGED THE EXECUTION OF SAME FOR AND ON BEHALF AND AS THE ACT AND DEED OF SAID CORPORATION, IN TESTIMONY WHEREOF I HAVE HEREUNTO SET MY HAND AND AFFIXED MY NOTARIAL SEAL THE DAY AND YEAR ABOVE WRITTEN.

Gary L. Wiley, NOTARY PUBLIC
GARY L. WILEY
MY COMMISSION EXPIRES Jan 15, 1997



THIS PLAT HAS BEEN SUBMITTED TO AND APPROVED BY THE WICHITA SEDGWICK COUNTY METROPOLITAN AREA PLANNING COMMISSION, WICHITA, KANSAS, DATED THIS 27th DAY OF April, 1995.

John W. McKay, Jr. CHAIRMAN
JOHN W. MCKAY, JR.
Marvin S. Krout SECRETARY
MARVIN S. KROUT

THIS PLAT APPROVED AND ALL DEDICATIONS SHOWN HEREON ARE ACCEPTED BY THE CITY COUNCIL OF THE CITY OF WICHITA, KANSAS, DATED THIS 31st DAY OF October, 1995.

Bob Knight MAYOR
BOB KNIGHT
Pat Burnett DEPUTY CITY CLERK
PAT BURNETT

ENTERED ON TRANSFER RECORD THIS _____ DAY OF _____, 1995.
_____, COUNTY CLERK
SUSAN E. CROCKETT-SPOON

THIS IS TO CERTIFY THAT THIS INSTRUMENT WAS FILED FOR RECORD IN THE REGISTER OF DEEDS OFFICE AT _____ A.M., ON THIS _____ DAY OF _____, 1995.

Ed Resa REGISTER OF DEEDS
ED RESA DEPUTY

COMMENCING AT THE SOUTHEAST CORNER OF THE NORTHEAST QUARTER OF SECTION 3, TOWNSHIP 27 SOUTH, RANGE 1 WEST OF THE 6TH P.M.; THENCE NORTH 00 DEGREES 08 MINUTES 06 SECONDS EAST ALONG THE EAST LINE OF SAID NORTHEAST QUARTER A DISTANCE OF 115.00 FEET TO THE POINT OF BEGINNING; THENCE SOUTH 89 DEGREES 47 MINUTES 30 SECONDS WEST A DISTANCE OF 189.00 FEET; THENCE SOUTH 74 DEGREES 32 MINUTES 29 SECONDS WEST A DISTANCE OF 57.01 FEET; THENCE SOUTH 89 DEGREES 47 MINUTES 30 SECONDS WEST A DISTANCE OF 740.12 FEET; THENCE NORTH 89 DEGREES 52 MINUTES 02 SECONDS WEST A DISTANCE OF 731.84 FEET; THENCE NORTH 00 DEGREES 07 MINUTES 58 SECONDS EAST A DISTANCE OF 17.00 FEET TO A POINT ON THE SOUTH LINE OF BAREFOOT BAY AN ADDITION TO WICHITA, SEDGWICK COUNTY, KANSAS; THENCE SOUTH 89 DEGREES 52 MINUTES 02 SECONDS EAST ALONG SAID SOUTH LINE A DISTANCE OF 252.19 FEET TO THE SOUTHEAST CORNER OF SAID ADDITION; THENCE NORTH 00 DEGREES 12 MINUTES 30 SECONDS WEST ALONG THE EAST LINE OF SAID ADDITION A DISTANCE OF 30.15 FEET; THENCE NORTH 44 DEGREES 47 MINUTES 30 SECONDS EAST A DISTANCE OF 268.58 FEET; THENCE NORTH 00 DEGREES 03 MINUTES 54 SECONDS EAST A DISTANCE OF 1525.08 FEET TO THE NORTHEAST CORNER OF SAID ADDITION; THENCE SOUTH 89 DEGREES 47 MINUTES 30 SECONDS WEST A DISTANCE OF 1945.00 FEET TO THE NORTHWEST CORNER OF SAID ADDITION; THENCE NORTH 25 DEGREES 59 MINUTES 16 SECONDS WEST A DISTANCE OF 781.47 FEET; THENCE NORTH 00 DEGREES 19 MINUTES 01 SECONDS WEST A DISTANCE OF 50.00 TO A POINT ON NORTH LINE OF THE NORTHWEST QUARTER OF SAID SECTION 3; THENCE NORTH 89 DEGREES 40 MINUTES 59 SECONDS EAST ALONG SAID NORTH LINE A DISTANCE OF 843.57 FEET TO THE NORTH ONE QUARTER CORNER OF SAID SECTION 3; THENCE NORTH 89 DEGREES 47 MINUTES 37 SECONDS EAST ALONG THE NORTH LINE OF SAID SECTION 3, A DISTANCE OF 876.96 FEET; THENCE SOUTH 00 DEGREES 03 MINUTES 54 SECONDS WEST A DISTANCE OF 510.00 FEET; THENCE NORTH 89 DEGREES 47 MINUTES 37 SECONDS EAST A DISTANCE OF 200.00 FEET; THENCE NORTH 00 DEGREES 03 MINUTES 54 SECONDS EAST A DISTANCE OF 510.00 FEET TO A POINT ON THE NORTH LINE OF SAID SECTION 3; THENCE NORTH 89 DEGREES 47 MINUTES 37 SECONDS EAST A DISTANCE OF 1561.72 FEET TO THE NORTHEAST CORNER OF SAID SECTION 3; THENCE SOUTH 00 DEGREES 08 MINUTES 06 SECONDS WEST ALONG THE EAST LINE OF SAID SECTION 3, A DISTANCE OF 2505.22 FEET TO THE POINT OF BEGINNING EXCEPT THE NORTH 30 FEET AND THE EAST 30 FEET OF ABOVE DESCRIBED TRACT FOR EXISTING RIGHTS-OF-WAY. THAT PART OF RIGHT OF WAY AGREEMENT AS PER FILM 1100 PAGE 621 AND TEMPORARY CONSTRUCTION EASEMENT AS PER FILM 1100, PAGE 623, WITHIN THE ABOVE DESCRIBED TRACT OF LAND ARE HEREBY VACATED AND REPLATTED BY VIRTUE OF K.S.A. 12-512(b) AMENDED.

Michael W. Berry
MICHAEL W. BERRY, S. NO. 346
PROFESSIONAL ENGINEERING CONSULTANTS, P.A.

KNOW ALL MEN BY THESE PRESENTS THAT WE, THE UNDERSIGNED PROPERTY OWNERS OF THE LAND, AS ABOVE SET FORTH IN THE SURVEYOR'S CERTIFICATE, HAVE CAUSED THE LAND TO BE SURVEYED AND PLATTED INTO LOTS, A BLOCK, STREETS, AND A RESERVE, THE SAME TO BE KNOWN AS BAREFOOT BAY 2ND ADDITION TO WICHITA, SEDGWICK COUNTY, KANSAS.

EASEMENTS AS INDICATED FOR THE CONSTRUCTION AND MAINTENANCE OF PUBLIC UTILITIES AND DRAINAGE ARE HEREBY GRANTED. THE STREETS ARE HEREBY DEDICATED TO AND FOR THE USE OF THE PUBLIC.

THE 5 FOOT WALL EASEMENT ALONG THE SOUTH LINE OF LOT 9, BLOCK 1, IS HEREBY PLATTED FOR THE CONSTRUCTION AND MAINTENANCE OF A PRIVATE WALL. UTILITIES MAY CROSS THE WALL EASEMENT.

LOWEST FLOOR ELEVATION FOR ALL LOTS SHALL BE 1326.0 M.S.L. OR 138.8 CITY DATUM.

RESERVE "A" IS HEREBY DISTANCED FOR FLOODWAY, LAKE, OPEN SPACE, ACCESS EASEMENT, RECREATIONAL FACILITIES, AND LANDSCAPING. RESERVE "A" SHALL BE SUBJECT TO THE RESTRICTIVE COVENANTS ESTABLISHED BY THE DECLARATION OF LANDOWNERS' ASSOCIATION AGREEMENTS AND SHALL BE OWNED AND MAINTAINED BY A LANDOWNERS' ASSOCIATION TO BE FORMED WITHIN BAREFOOT BAY 2ND ADDITION TO WICHITA, SEDGWICK COUNTY, KANSAS.

THE FLOODWAY WITHIN RESERVE "A" SHALL BE THE RESPONSIBILITY OF THE LANDOWNERS' ASSOCIATION UNTIL SUCH TIME AS THE GOVERNING BODY EXERCISING JURISDICTION ELECTS TO ASSUME THE RESPONSIBILITY FOR THE MAINTENANCE AND IMPROVEMENT OF THE FLOODWAY, PROVIDED FURTHER THAT NO STRUCTURE SHALL BE CONSTRUCTED ON OR WITHIN SAID FLOODWAY, NOR SHALL ANY FILL, CHANGE OF GRADE, CREATION OF CHANNEL OR ANY OTHER WORK BE CARRIED ON WITHOUT THE PERMISSION OF THE CITY ENGINEER.

ALL ABUTTERS' RIGHTS OF ACCESS TO AND FROM 29TH STREET NORTH AND HOOPER, AS SHOWN, ARE HEREBY GRANTED TO THE CITY OF WICHITA.

OWNER: BAREFOOT BAY DEVELOPMENT, INC.,
BY: Jack D. Ritchie
JACK D. RITCHIE, VICE-PRESIDENT

SCALE: 1"=200'
● = IRON FOUND
○ = IRON SET

A.C. = ACCESS CONTROL
C.A.C. = COMPLETE ACCESS CONTROL
B.S.L. = BUILDING SETBACK LINE

BENCH MARK: CITY OF WICHITA BENCH MARK DISC, 30 FEET NORTH AND 37 FEET EAST OF THE INTERSECTION OF THE CENTERLINES OF HOOPER AND 21ST ST. W.
ELEV.=139.991 CITY DATUM
ELEV.=1327.17 M.S.L.

LOWEST FLOOR ELEVATION FOR ALL LOTS SHALL BE 1326.0 M.S.L. OR 138.8 CITY DATUM.

NOTE: MONUMENTS FOR RESERVE BOUNDARIES NOT SET UNLESS OTHERWISE NOTED.