

**DRAINAGE PLAN**

**BAREFOOT BAY 2ND ADDITION**

**OWNER/DEVELOPER: GRANDVIEW INC.**  
 c/o JACK RITCHIE  
 8100 E. 22ND ST. N. BLDG. 1000  
 WICHITA, KANSAS 67226

**ENGINEER: PROFESSIONAL ENGINEERING CONSULTANTS, P.A.**  
 303 S. TOPEKA  
 WICHITA, KANSAS 67211

NOTE: All lots shall surface drain to lake or street.

BENCH MARK: CITY OF WICHITA BENCH MARK DISC, 30 FEET NORTH AND 37 FEET EAST OF THE INTERSECTION OF THE CENTERLINES OF HOOVER AND 21ST ST. ELEV. 139.891 CITY DATUM ELEV. 1397.17 U.S.L.

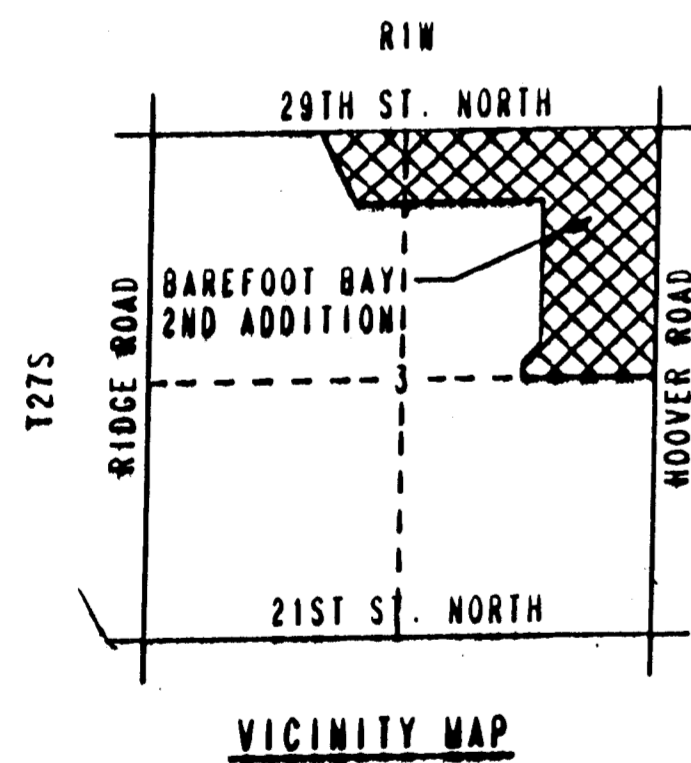
**NOTES**

MINIMUM PAD ELEVATION (LOWEST OPENING) FOR ALL LOTS SHALL BE 1926.0 U.S.L. OR 190.0 CITY DATUM.  
 LOWEST FLOOR ELEVATION FOR ALL LOTS SHALL BE 1926.0 U.S.L. OR 190.0 CITY DATUM.  
 RESERVE "A" SHALL BE FOR FLOODWAY, LAKE, OPEN SPACE, RECREATIONAL FACILITIES AND LANDSCAPING.

SCALE: 1"=200'  
 3/31/95

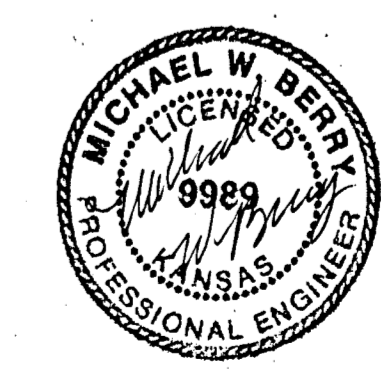
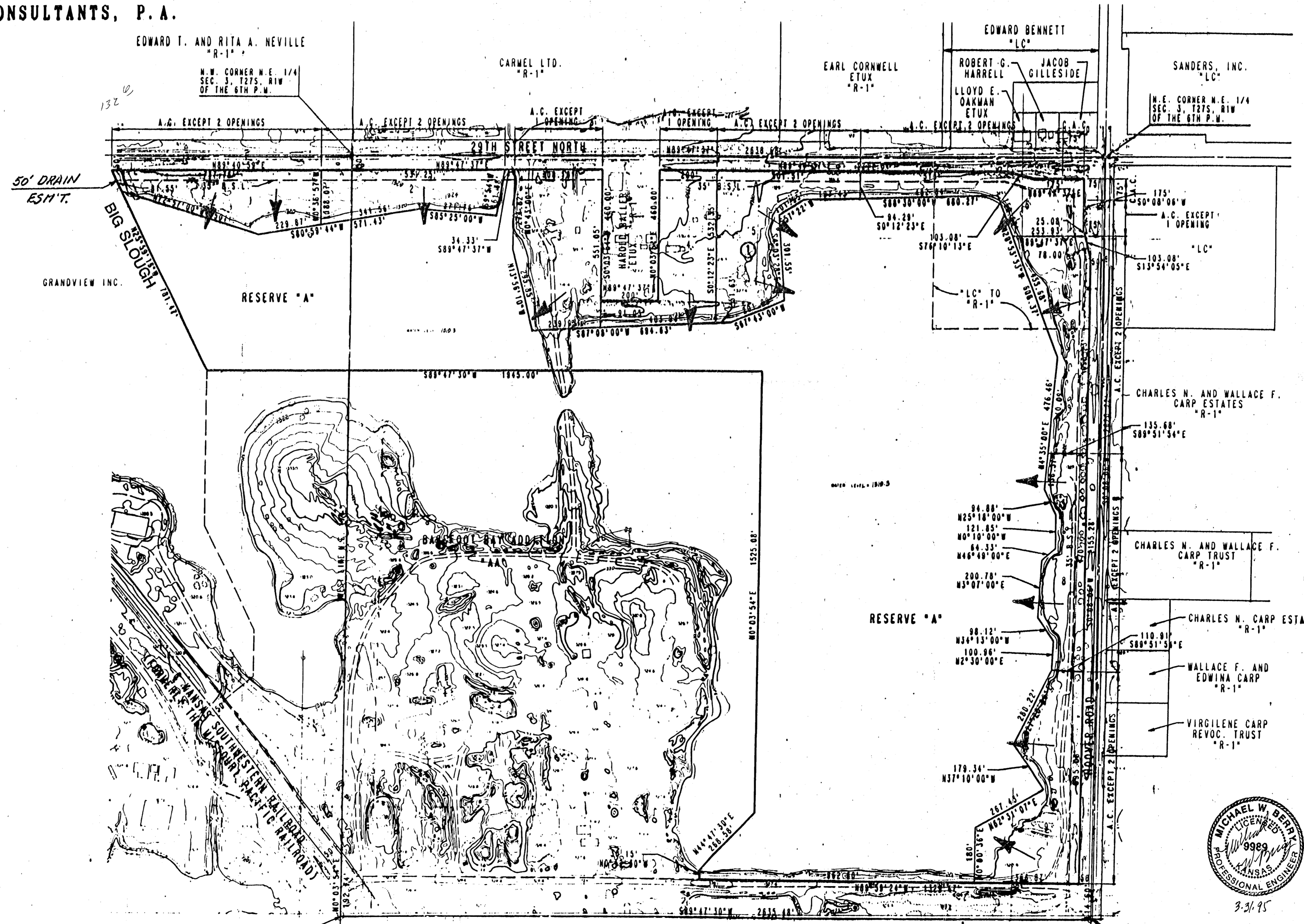
TOPOGRAPHY FEBRUARY, 1985

A.C. = ACCESS CONTROL  
 C.A.C. = COMPLETE ACCESS CONTROL  
 B.S.L. = BUILDING SETBACK LINE



**UTILITIES**

**ELECTRIC:** 7.2 K.V. 30 (EAST-WEST) ON NORTH SIDE OF 20TH STREET NORTH (AERIAL) AND 7.2 K.V. 30 (NORTH-SOUTH) ON EAST SIDE OF HOOVER ROAD (AERIAL).  
**GAS:** 2" ARMA GAS MAIN (NORTH-SOUTH) 30 FEET WEST OF HOOVER ROAD AND 2" ARMA GAS MAIN (EAST-WEST) 22 FEET NORTH OF 20TH STREET NORTH.  
**TELEPHONE:** UNDERGROUND LINE (NORTH-SOUTH) ON WEST SIDE HOOVER ROAD AND UNDERGROUND LINE (EAST-WEST) ON NORTH SIDE 20TH STREET NORTH.  
**SANITARY SEWER:** NO CITY SANITARY SEWER AVAILABLE.  
**WATER:** CLOSEST CITY WATER MAIN AT HOOVER ROAD AND 21ST STREET NORTH.



3.31.95