

N.W. Corner, S.W. 1/4
Sec. 15, T27S, R2E
of the 6th P.M.

WILLARD J. AND ALICE M. KISER
LIVING TRUST
ZONED R-1

N.E. Corner, S.W. 1/4
Sec. 15, T27S, R2E
of the 6th P.M.

**PRELIMINARY PLAT OF
BALTHROP ADDITION
SEDGWICK COUNTY, KANSAS**

**OWNER/DEVELOPER:
RITCHIE ASSOCIATES, INC. AND
CECILIA BALTHROP LIVING TRUST
8100 E. 22ND STREET NORTH BLDG. 1000
WICHITA, KANSAS 67226**

**ENGINEER:
PROFESSIONAL ENGINEERING CONSULTANTS, P.A.
303 S. TOPEKA
WICHITA, KANSAS 67202**



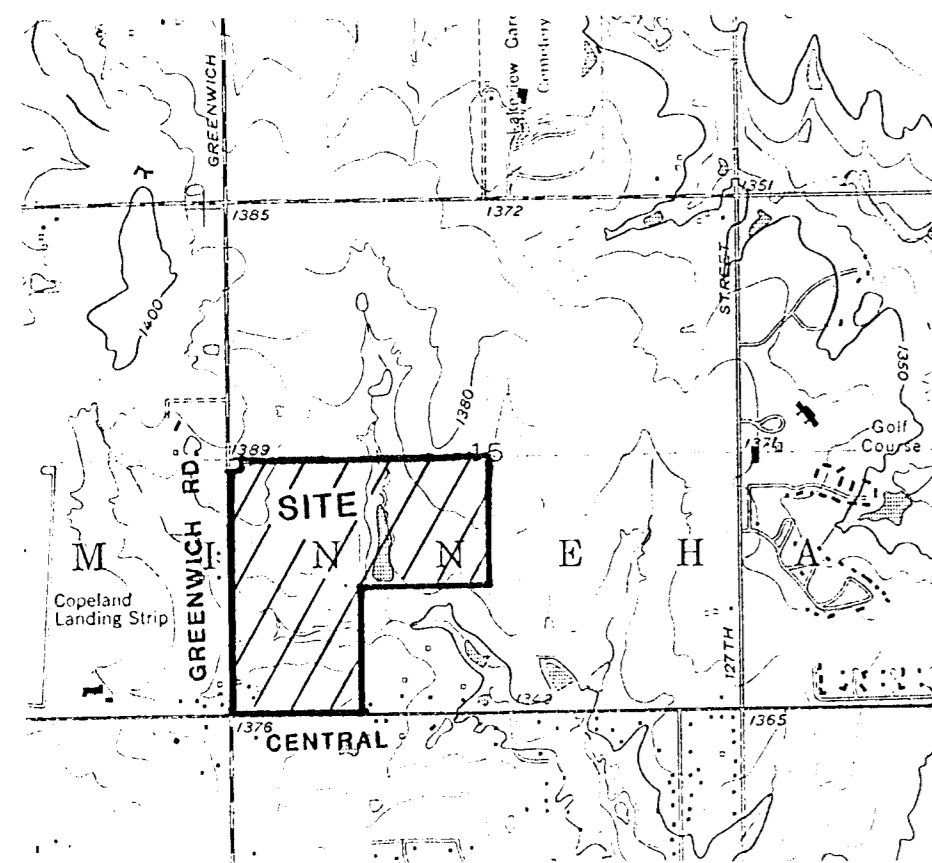
SCALE: 1"=100'
FEB. 27, 1995
TOPOGRAPHY, JAN. 5, 1993

B.M. - CHISELED "C" IN CENTER CONCRETE HEADWALL TO R.C.G.
24.5' SOUTH AND 56.7' WEST OF THE INTERSECTION OF THE
CENTERLINES OF CENTRAL AND GREENWICH.
ELEV. 136.828 CITY DATUM
1376.228 MSL

RESERVES "A" THRU "D" SHALL PERMIT LANDSCAPING, ENTRY MONUMENTS,
LIGHTING AND UTILITIES.

RESERVES "E" THRU "G" SHALL PERMIT LANDSCAPING, ENTRY MONUMENTS,
LIGHTING, WALLS, WALKS, DRAINAGE, DRAINAGE STRUCTURES AND
UTILITIES CONFINED TO EASEMENTS.

RESERVE "H" SHALL PERMIT LANDSCAPING, LIGHTING, WALKS, DRAINAGE,
DRAINAGE STRUCTURES, LAKES, RECREATIONAL IMPROVEMENTS, CLUBHOUSE,
POOL, PLAYGROUND EQUIPMENT AND UTILITIES CONFINED TO EASEMENTS.



AREA MAP

BEECH AIRCRAFT CORP.
ZONED "E"

K.G & E COMPANY
ZONED L.C.

SAMRA 2ND
ADDITION
ZONED L.C.

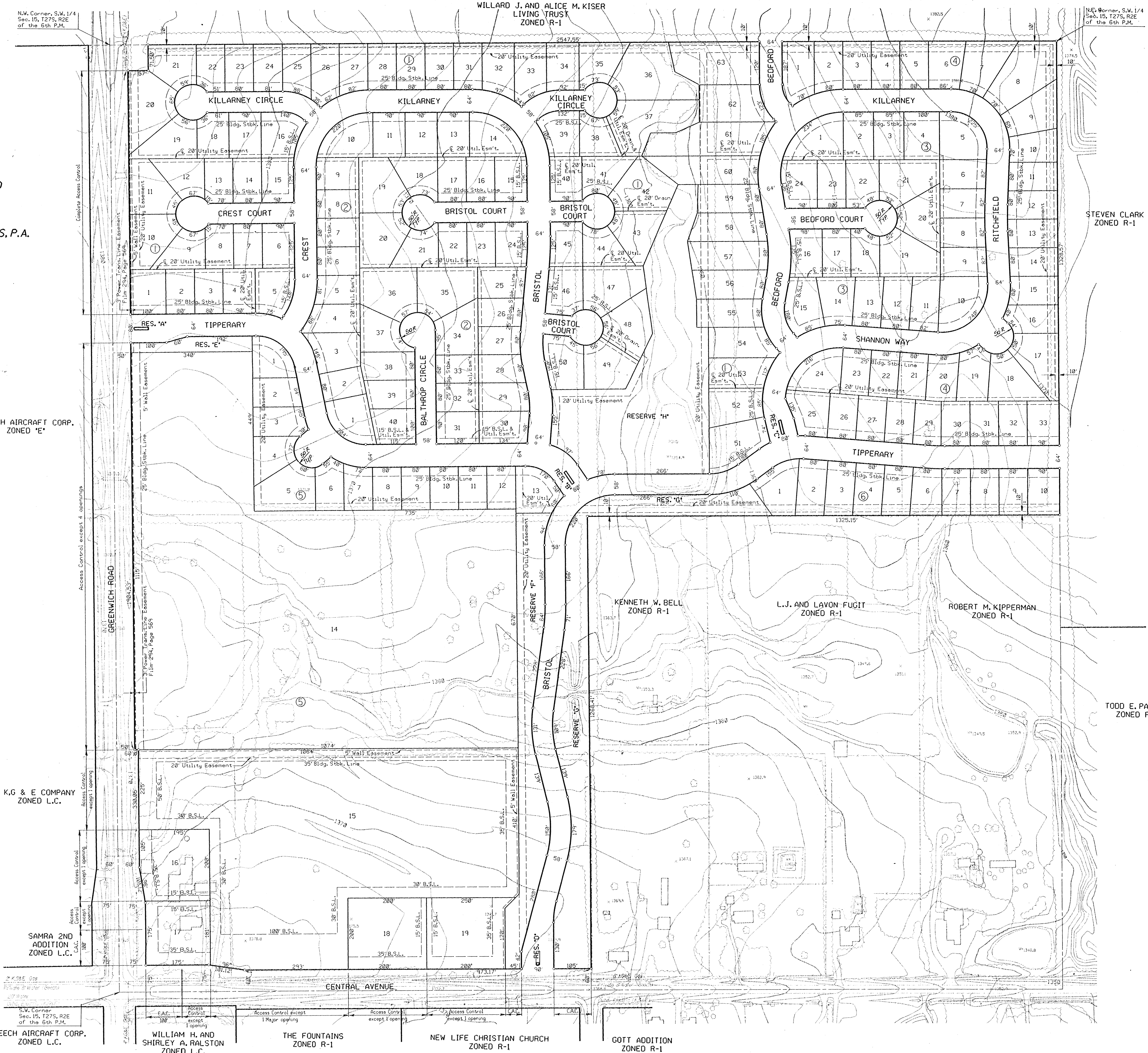
BEECH AIRCRAFT CORP.
ZONED L.C.

WILLIAM H. AND
SHIRLEY A. RALSTON
ZONED L.C.

THE FOUNTAINS
ZONED R-1

NEW LIFE CHRISTIAN CHURCH
ZONED R-1

GOTT ADDITION
ZONED R-1



STEVEN CLARK
ZONED R-1

TODD E. PARKER
ZONED R-1

KENNETH W. BELL
ZONED R-1

L.J. AND LAVON FUGIT
ZONED R-1

ROBERT M. KIPPERMAN
ZONED R-1