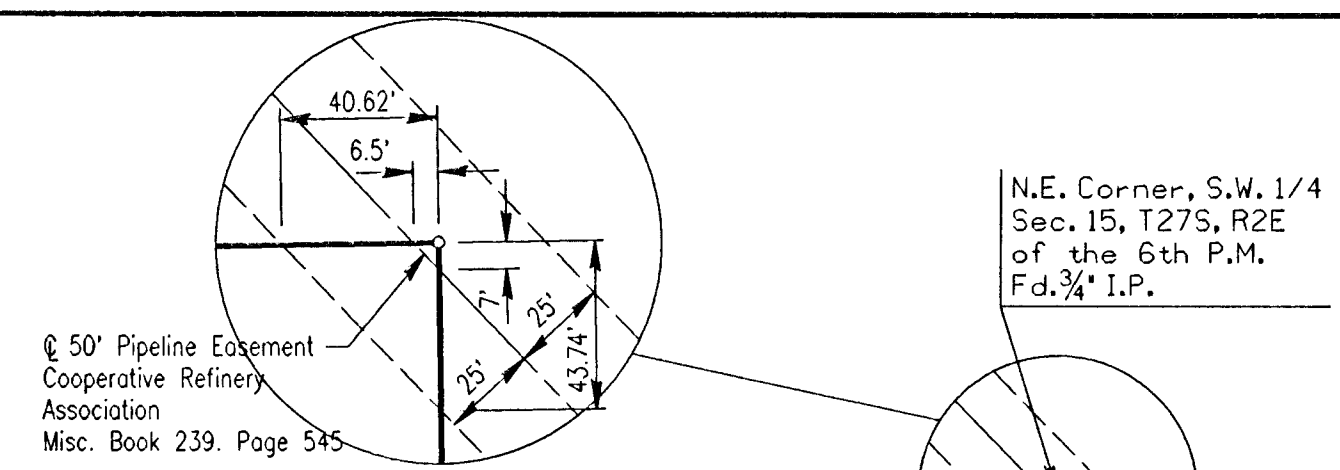
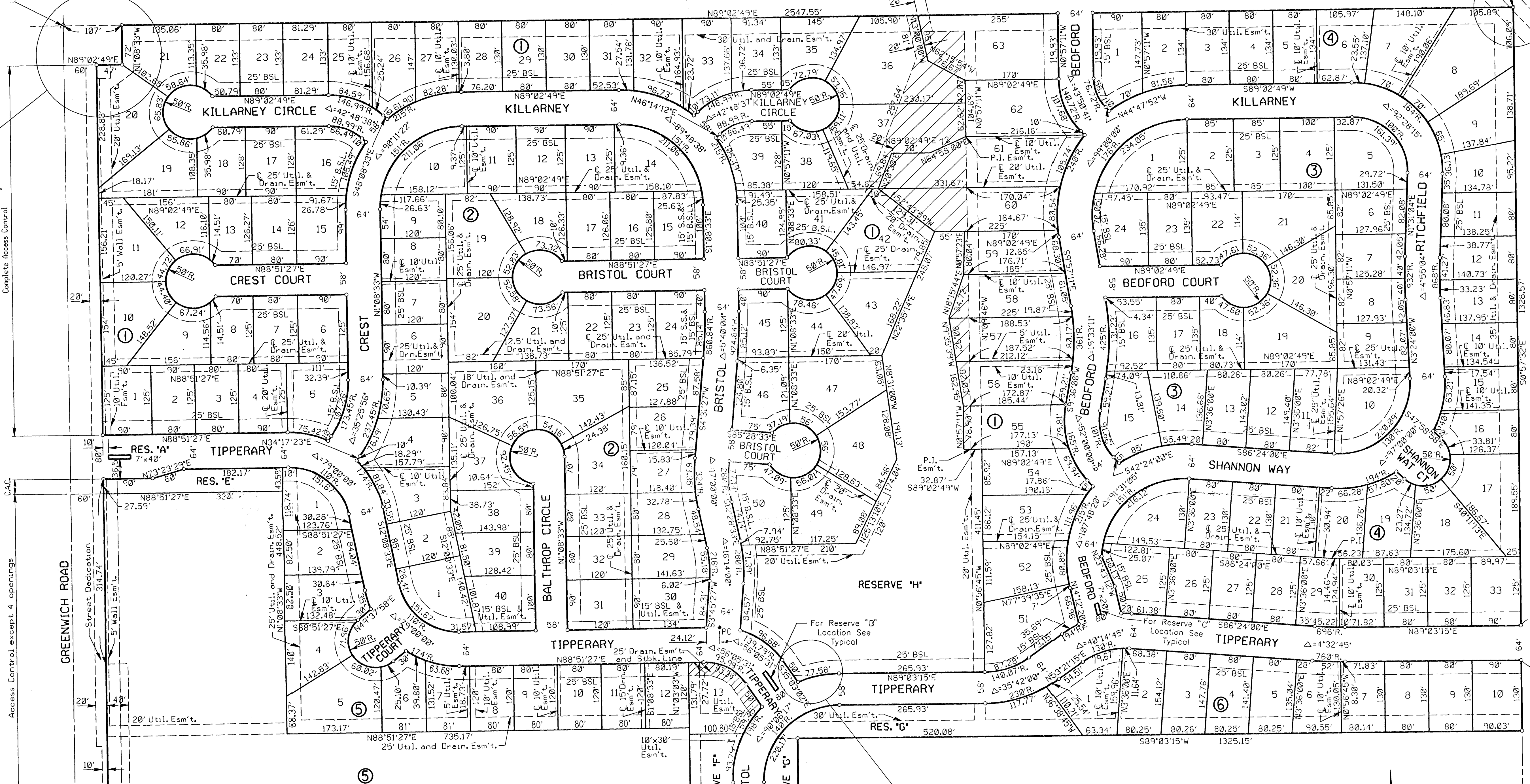
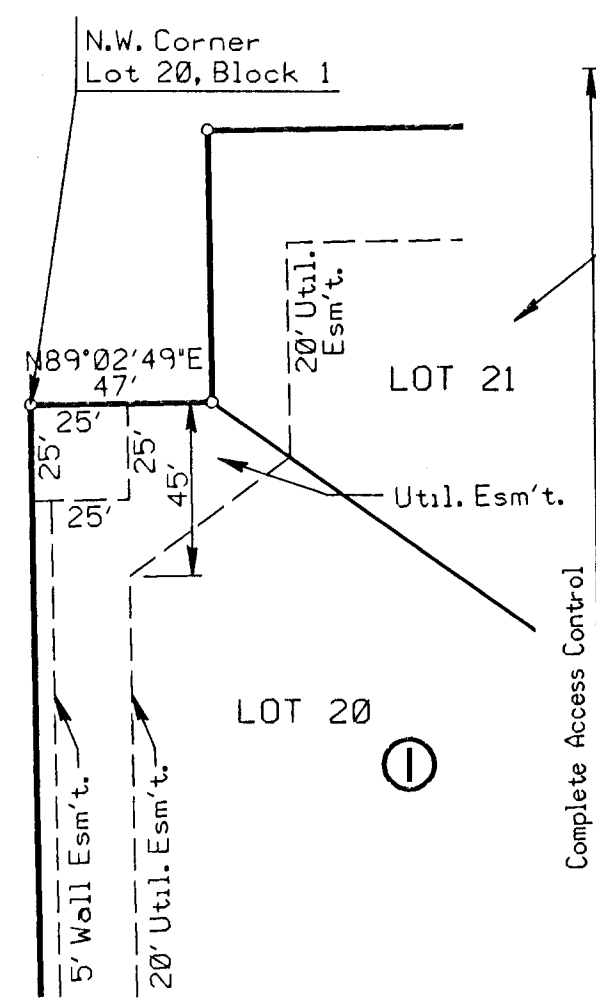


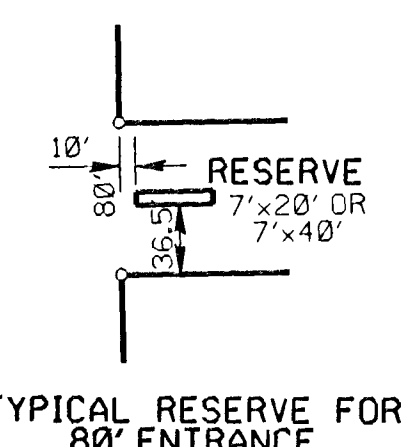
BALTHROP ADDITION TO SEDGWICK COUNTY, KANSAS



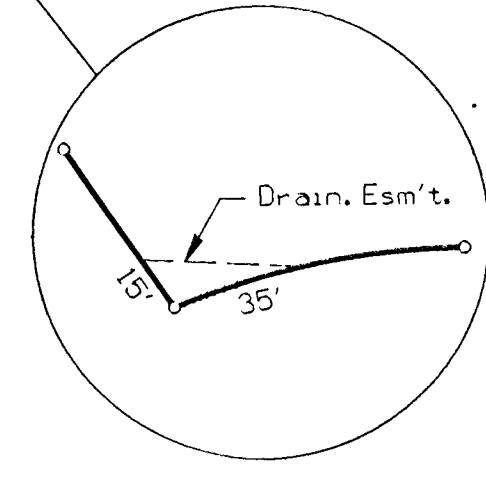
N.W. Corner, S.W. 1/4
Sec. 15, T27S, R2E
of the 6th P.M.
Fd. 1st I.P.



NOTE: 2 ACCESS ENTRANCES TO LOT 14
THROUGH RESERVE "F" (SEE TEXT).



NOTE: CONTINGENT DEDICATION THROUGH
RESERVE "G" (SEE TEXT).



- SCALE: 1"=100'
- = IRON SET
- B.S.L. = BUILDING SETBACK LINE
- C.A.C. = COMPLETE ACCESS CONTROL
- S.S. = SANITARY SEWER
- ▨ = DRAINAGE EASEMENT

B.M. - CHISELED "D" IN CENTER CONCRETE HEADWALL TO R.C.B.
24.5' SOUTH AND 58.7' WEST OF THE INTERSECTION OF THE
CENTERLINES OF CENTRAL AND GREENWICH
ELEV. 188.828 CITY DATUM

MINIMUM PAD ELEVATIONS (LOWEST OPENING) AS FOLLOWS:
LOTS 36-63, BLOCK 1 = ELEV. 1362.00 M.S.L.
LOTS 14&15, BLOCK 5 = ELEV. 1362.00 M.S.L.

