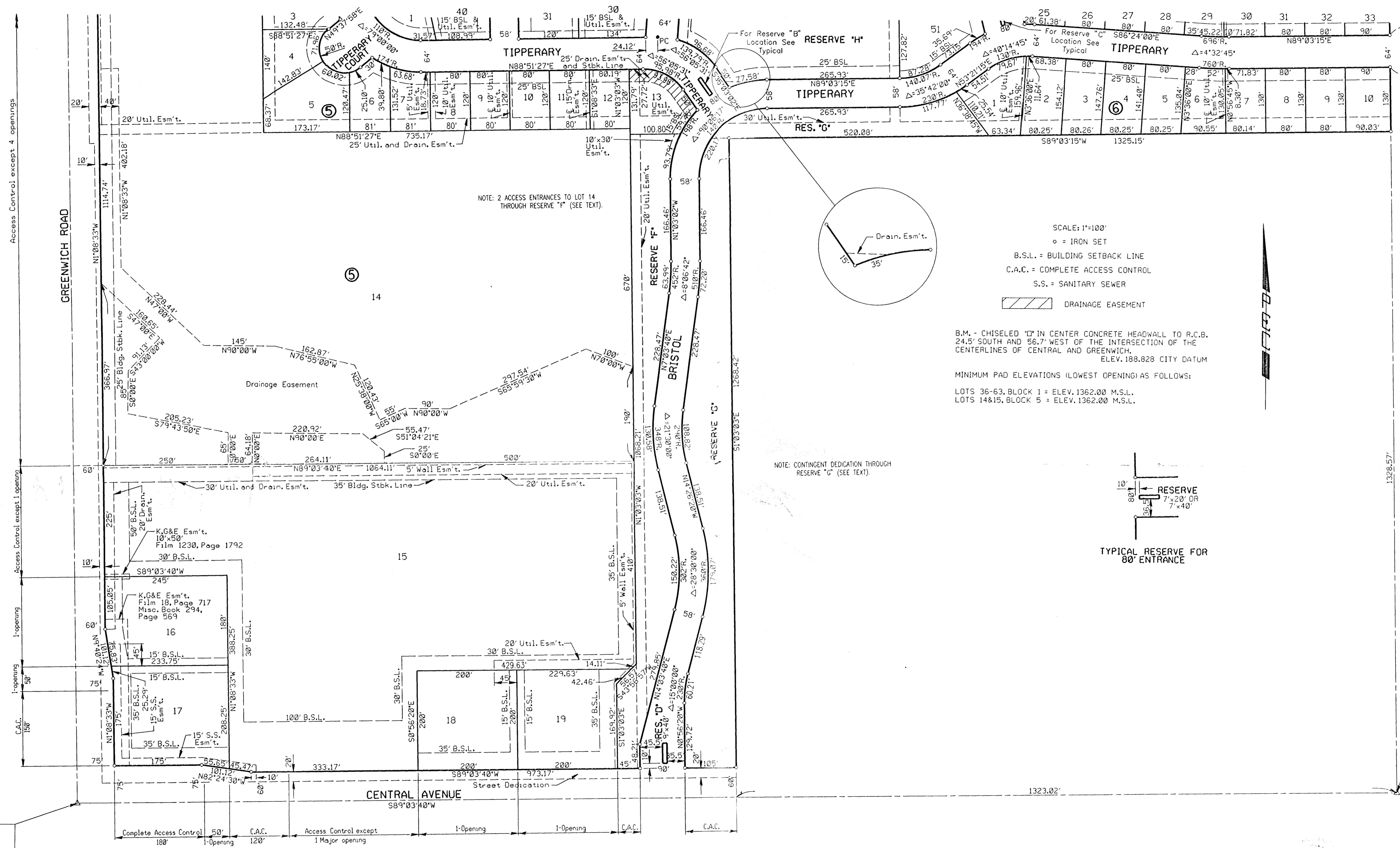


BALTHROP ADDITION TO SEDGWICK COUNTY, KANSAS



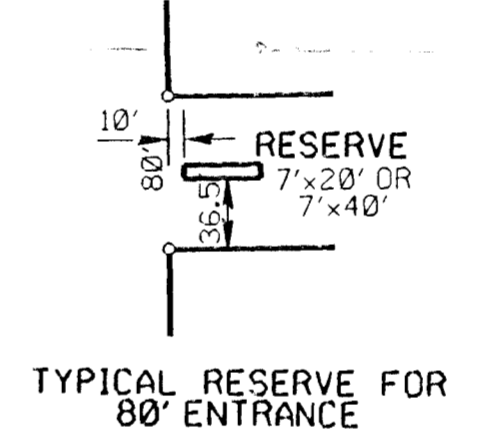
NOTE: 2 ACCESS ENTRANCES TO LOT 14 THROUGH RESERVE "F" (SEE TEXT).

NOTE: CONTINGENT DEDICATION THROUGH RESERVE "G" (SEE TEXT).

SCALE: 1"=100'
 ○ = IRON SET
 B.S.L. = BUILDING SETBACK LINE
 C.A.C. = COMPLETE ACCESS CONTROL
 S.S. = SANITARY SEWER
 [Hatched Box] DRAINAGE EASEMENT

B.M. - CHISELED "D" IN CENTER CONCRETE HEADWALL TO R.C.B. 24.5' SOUTH AND 56.7' WEST OF THE INTERSECTION OF THE CENTERLINES OF CENTRAL AND GREENWICH.
 ELEV. 188.828 CITY DATUM

MINIMUM PAD ELEVATIONS (LOWEST OPENING) AS FOLLOWS:
 LOTS 36-63, BLOCK 1 = ELEV. 1362.00 M.S.L.
 LOTS 14&15, BLOCK 5 = ELEV. 1362.00 M.S.L.



Temporary Cul-de-sac by Separate Instrument

S.E. Corner, S.W. 1/4 Sec. 15, T27S, R2E of the 6th P.M. Fd. #5 rebar w/ P.E.C. Cap

S.W. Corner Sec. 15, T27S, R2E of the 6th P.M. Fd. 1/2" I.P. in Thimble