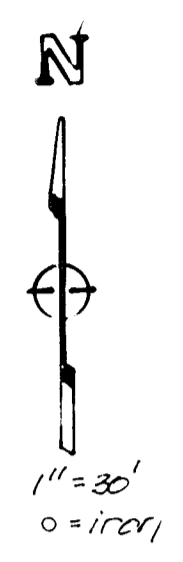
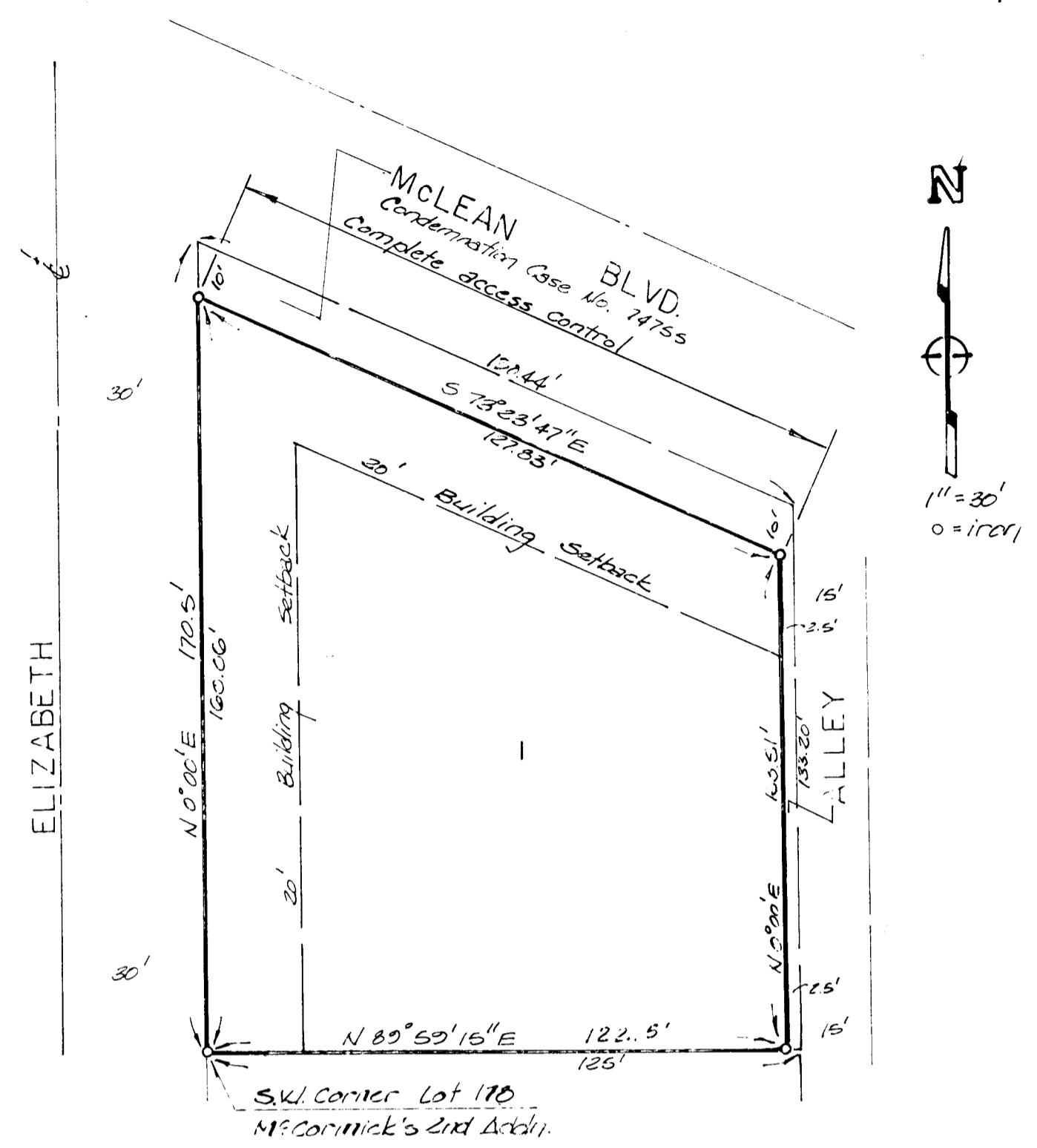


BARNARD'S 2ND ADDITION

WICHITA, KANSAS



State of Kansas }
 Sedwick County } s.s. We, Baughman Company, P.A., Surveyors
 in aforesaid County and State do hereby certify that we
 have surveyed and platted "BARNARD'S 2ND ADDITION",
 Wichita, Kansas and that the accompanying plat is a true
 and correct exhibit of the property surveyed, described as
 being a replat of Lots 172, 180, 182, 184, 186, 188, and 190 on
 Elizabeth, McCormick's Second Addition, to Wichita, Kansas,
 except that part condemned for McLean Blvd. in Case No. 74755.

All being situated in the NE 1/4 of Sec. 19, Twp. 21-S,
 R-1-E of the 6th. P.M. Sedwick County, Kansas.

Baughman Company, P.A.

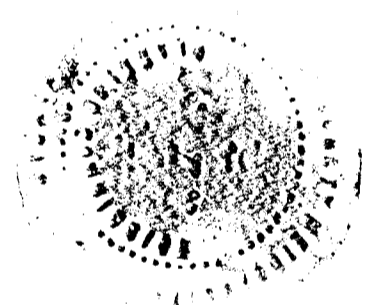
6-6-85
 Date

William L. Ketter Surveyor
 William L. Ketter

Know all men by these presents that we,
 the undersigned, have caused the land described in the
 surveyors certificate to be platted into a lot, street
 and alley to be known as "BARNARD'S 2ND ADDITION",
 Wichita, Kansas. The street and alley are hereby dedicated
 to and for the use of the public. All abutters rights of
 access to or from McLean over and across the North line
 of lot 1 are hereby granted to the City of Wichita, Kansas.

Albert S. Barnard Albert S. Barnard

This plat of "BARNARD'S 2ND ADDITION",
 Wichita, Kansas, has been submitted to and approved by
 the Wichita - Sedwick County Metropolitan Area
 Planning Commission, Wichita, Kansas.
 Dated this 31st day of May 1985
 Wichita - Sedwick County Metropolitan Area Planning Commission.



James C. Wilson Chairman
 James C. Wilson
Robert A. Lakin Secretary
 Robert A. Lakin

This plat approved and all dedications
 shown herein accepted by the Board of Commissioners
 of the City of Wichita, Kansas, this 23rd day of
 June 1985.

Robert Brown Mayor
 Robert Brown
Donald C. Griebick City Clerk
 Donald C. Griebick

State of Kansas }
 Sedwick County } s.s. The foregoing instrument was
 acknowledged before me this ___ day of _____, 1985, by
 Albert L. Barnard, a single person.

My appt. expires _____
 Notary Public

Entered on transfer record
 this ___ day of _____, 1985

County Clerk

State of Kansas }
 Sedwick County } s.s. This is to certify that this plat has
 been filed for record in the office of the Register of
 Deeds, this ___ day of _____, 1985, at
 o'clock ___ M.; and is duly recorded.

Register of Deeds

Deputy