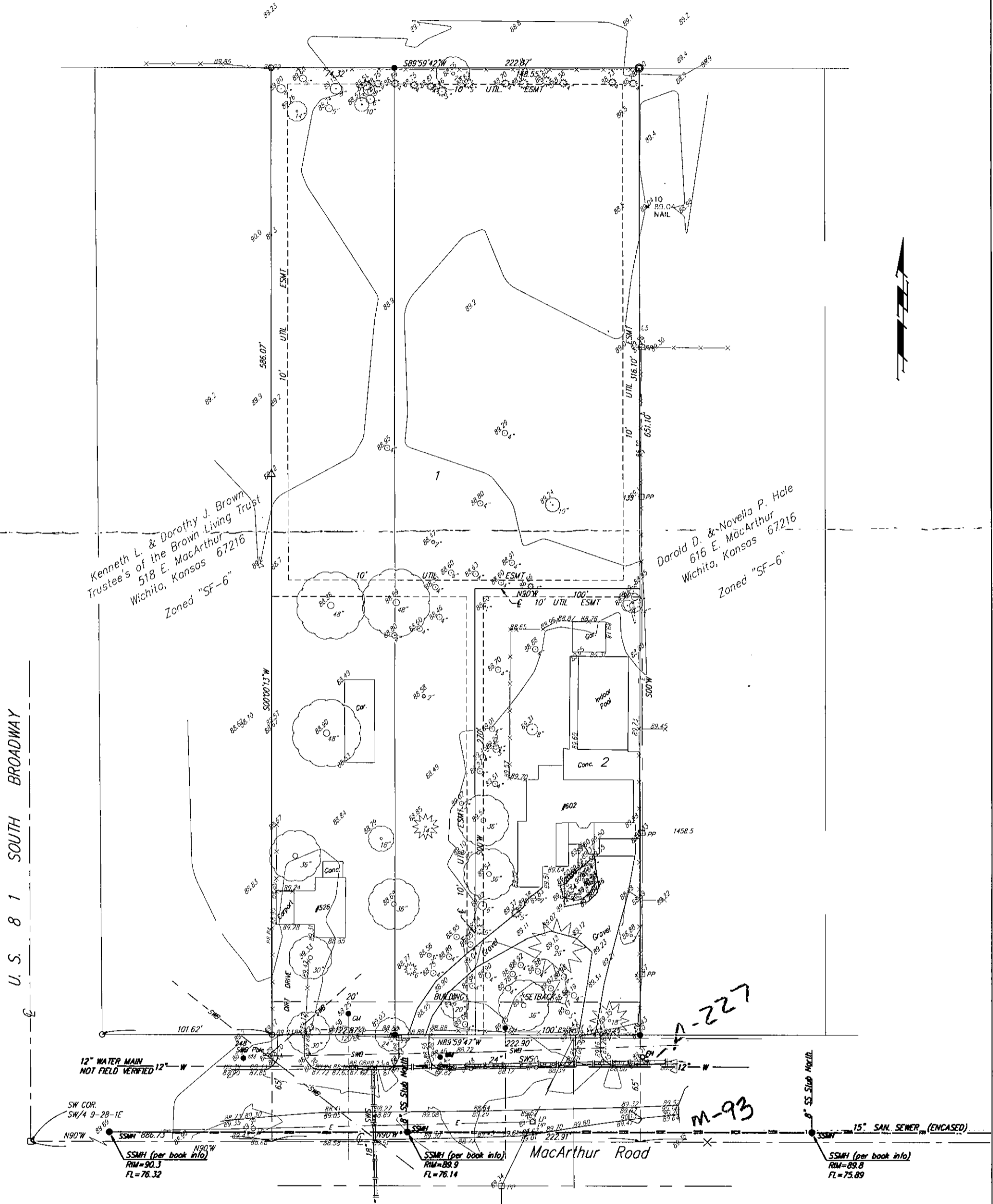


SS to North
Contact DeRoe

UTILITY PLAN
BARNUM ADDITION
WICHITA, SEDGWICK COUNTY, KANSAS



22 SEPTEMBER 1997
BAUGHMAN COMPANY P. A.
ENGINEERING, SURVEYING, & PLANNING
(316)-262-7271 • 315 ELLIS • WICHITA, KANSAS 67211
F:\HYDRO\DRPLAN\BARNUM.DWG-bj