

ESTATES AT BELLE TERRE

SEDGWICK COUNTY, KANSAS.

State of Kansas)
Sedgwick County) SS

We, Baughman Company P.A., Surveyors in aforesaid county and state do hereby certify that we have surveyed and platted, "ESTATES AT BELLE TERRE", Sedgwick County, Kansas and that the accompanying plot is a true and correct exhibit of the property surveyed described as being that part of the N.E. 1/4 of Sec. 24, Twp. 27-S, R-2-E of the 6th P.M., Sedgwick County, Kansas, described as commencing at the N.E. Corner of said N.E. 1/4; thence with an assumed bearing of S 00°12'56" W along the east line of said N.E. 1/4, 193.74 feet for a point of beginning; thence N 89°47'04" W, 50 feet; thence S 58°17'23" W, 204.74 feet; thence S 57°03'52" W, 503.83 feet; thence S 56°32'52" W, 287.64 feet; thence S 56°53'41" W, 429.77 feet; thence S 30°13'27" E, 185.87 feet; thence S 01°49'51" E, 349.73 feet; thence S 13°02'36" E, 384.49 feet; thence S 00° 01'34" E, 205 feet to a point on the south line of said N.E. 1/4; thence N 89°58'26" E, 1048.43 feet to the S.E. Corner of said N.E. 1/4; thence N 00°12'56" E, 186.39 feet to the point of beginning.

Existing easements and dedications being vacated by virtue of K.S.A. 12-512(b).

Date _____
Baughman Company, P.A.

Gregory F. Severns
Surveyor

State of Kansas)
Sedgwick County) SS

The foregoing instrument acknowledged before me, this _____ day of _____, 1993, by Gregory C. Downing, President of Downing Development Company, L.L.C. on behalf of Downing Development Company, L.L.C.

My appointment Expires _____

Notary Public

We, the undersigned, holders of a mortgage on the above described property do hereby consent to the plat of "ESTATES AT BELLE TERRE", Sedgwick County, Kansas.

Prairie State Bank

Randall D. Craven
Vice-President

State of Kansas)
Sedgwick County) SS

The foregoing instrument acknowledged before me, this _____ day of _____, 1993, by Randall D. Craven, Vice-President of Prairie State Bank on behalf of the bank.

My appointment Expires _____

Notary Public

This plat of ESTATES AT BELLE TERRE, Sedgwick County, Kansas, has been submitted to and approved by the Wichita-Sedgwick County Metropolitan Area Planning Commission, Wichita, Kansas.

Dated this _____ day _____, 1993.
Wichita-Sedgwick County Metropolitan Area Planning Commission.

L. O. Breckenridge Jr.
Chairman

Marvin S. Krout
Secretary

This plat approved and all dedications shown hereon accepted by the City Council of the City of Wichita, Kansas, this _____ day of _____, 1993.

Frank M. Ojile
Mayor

Pat Burnett
City Clerk

Downing Development Company, L.L.C.

Gregory C. Downing
President

This plat approved and all dedications shown hereon accepted by the board of Commissioners of Sedgwick County, Kansas, this _____ day of _____, 1993.

- _____
Chairman
- _____
Chairman Pro-Tem
- _____
Commissioner
- _____
Commissioner
- _____
Commissioner
- _____
County Clerk
- _____
Susan E. Crockett-Spoon

Entered on transfer record this _____ day _____, 1993.

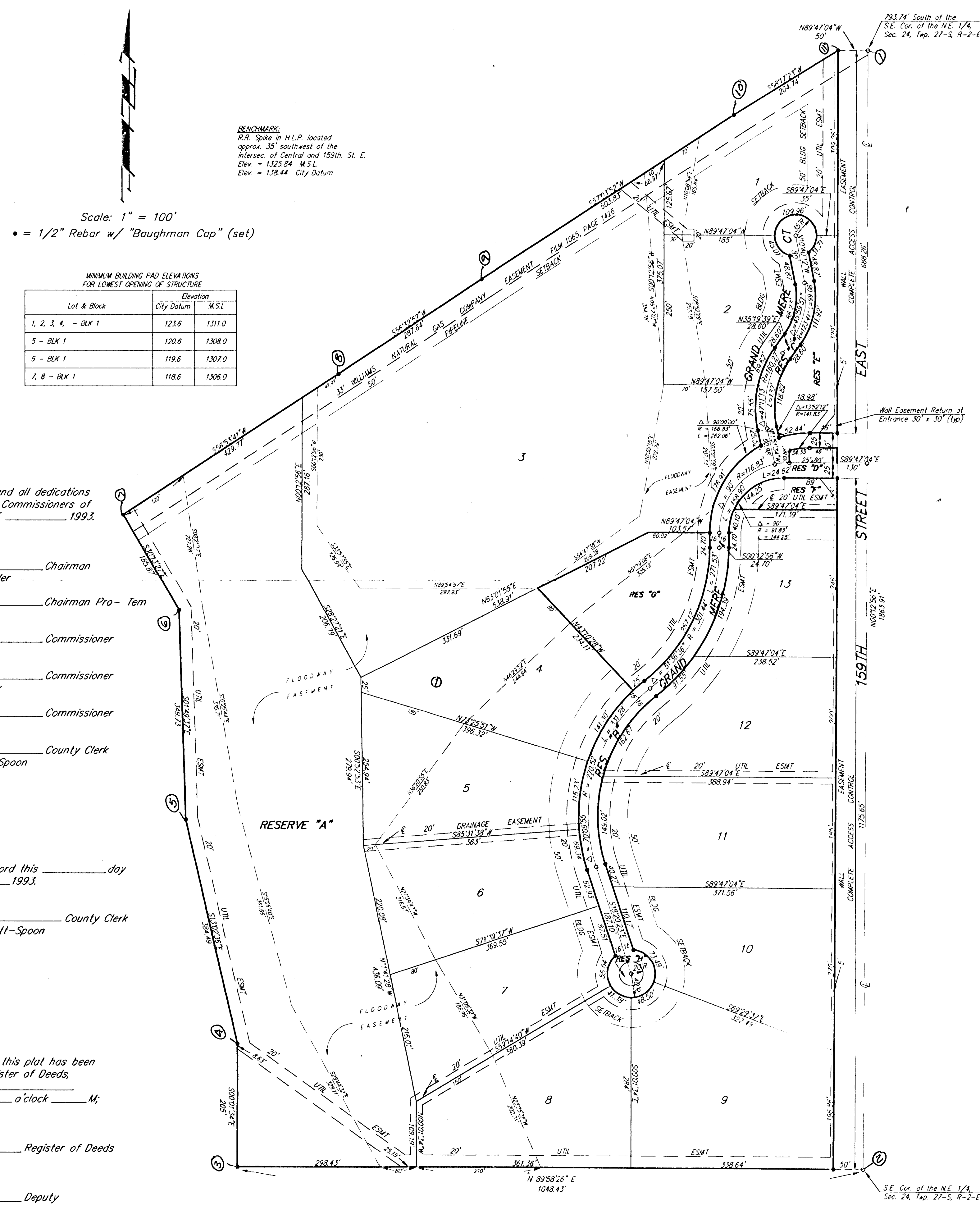
County Clerk

State of Kansas)
Sedgwick County) SS

This is to certify that this plat has been filed for record in the office of the Register of Deeds, this _____ day of _____, 1993, at _____ o'clock _____ M; and is duly recorded.

Pot Kettler
Register of Deeds

Ed Resa
Deputy



Downing Development Company, L.L.C.

Gregory C. Downing
President