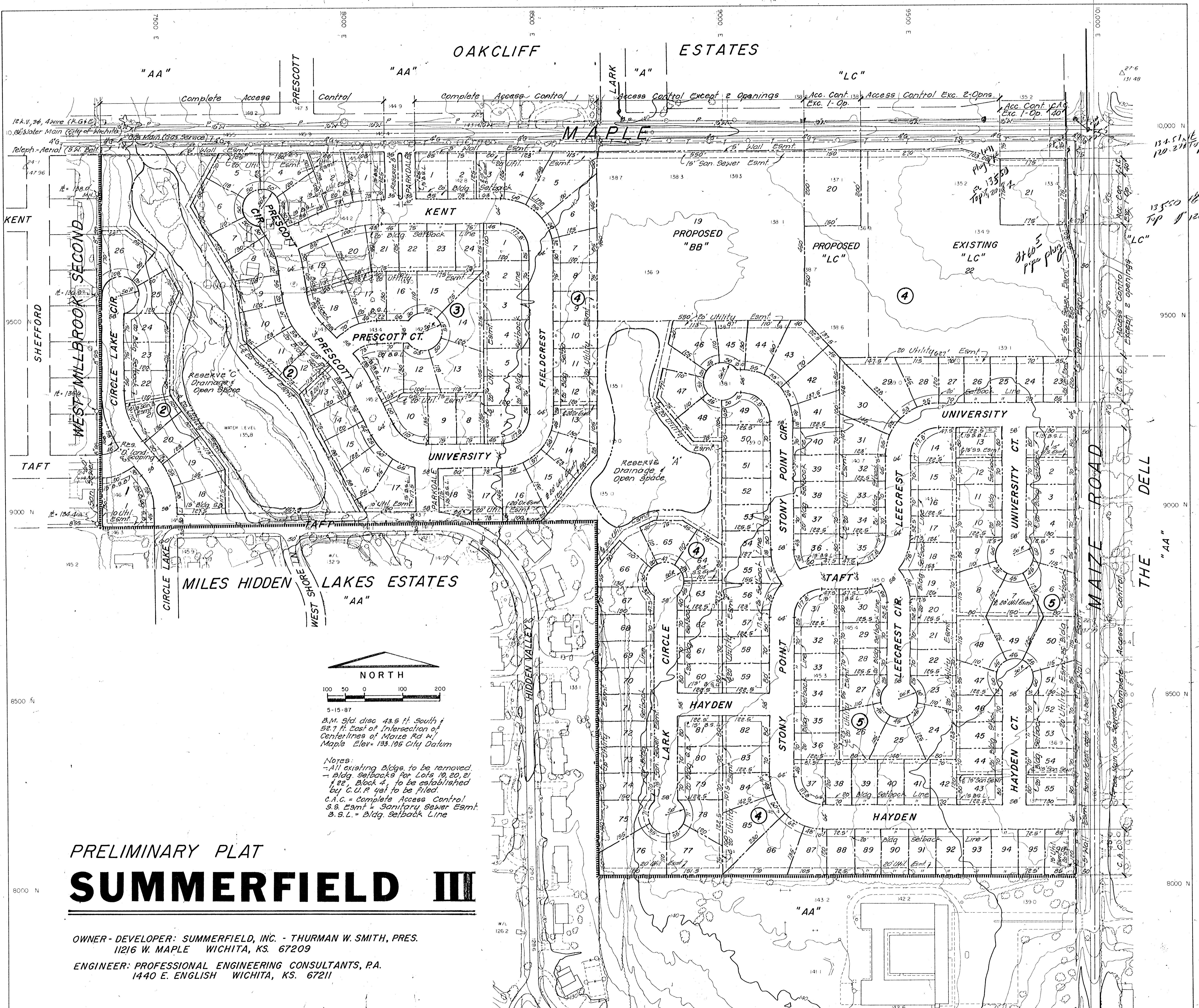
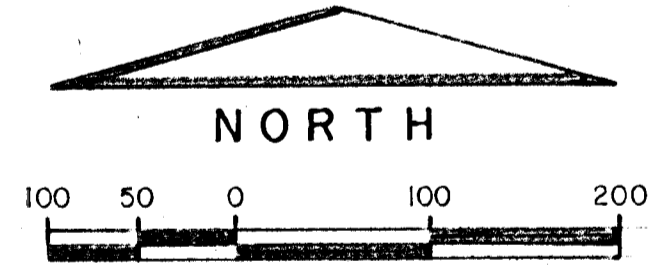


SWS #199



134.51 N.E.
120.27 Top

135.50 N.E.
120.75 Top



5-15-87
B.M. 5'rd disc 43.5 ft. South & 52.7 ft. East of Intersection of Centerlines of Maize Rd w/ Maple Elev = 133.195 City Datum

Notes:
- All existing Bldgs. to be removed.
- Bldg. setbacks for Lots 19, 20, 21 & 22, Block 4, to be established by C.U.P. yet to be filed.
C.A.C. = Complete Access Control
S.S. Easmt = Sanitary Sewer Easmt.
B.S.L. = Bldg. Setback Line

PRELIMINARY PLAT
SUMMERFIELD III

OWNER-DEVELOPER: SUMMERFIELD, INC. - THURMAN W. SMITH, PRES.
11216 W. MAPLE WICHITA, KS. 67209
ENGINEER: PROFESSIONAL ENGINEERING CONSULTANTS, P.A.
1440 E. ENGLISH WICHITA, KS. 67211