

# CAMBRIDGE ESTATES

AN ADDITION TO WICHITA, SEDGWICK COUNTY, KANSAS

SCALE: 1" = 100'  
 ○ = IRON SET  
 S.S. = SANITARY SEWER  
 B.S.L. = BUILDING SETBACK LINE

B.M. - CITY OF WICHITA STD. DISC 43.5 FT. SOUTH AND 52.7 FT. EAST OF INTERSECTION OF CENTERLINES OF MAIZE RD. AND MAPLE ELEV. = 133.195 CITY DATUM ELEV. = 1320.595 M.S.L.

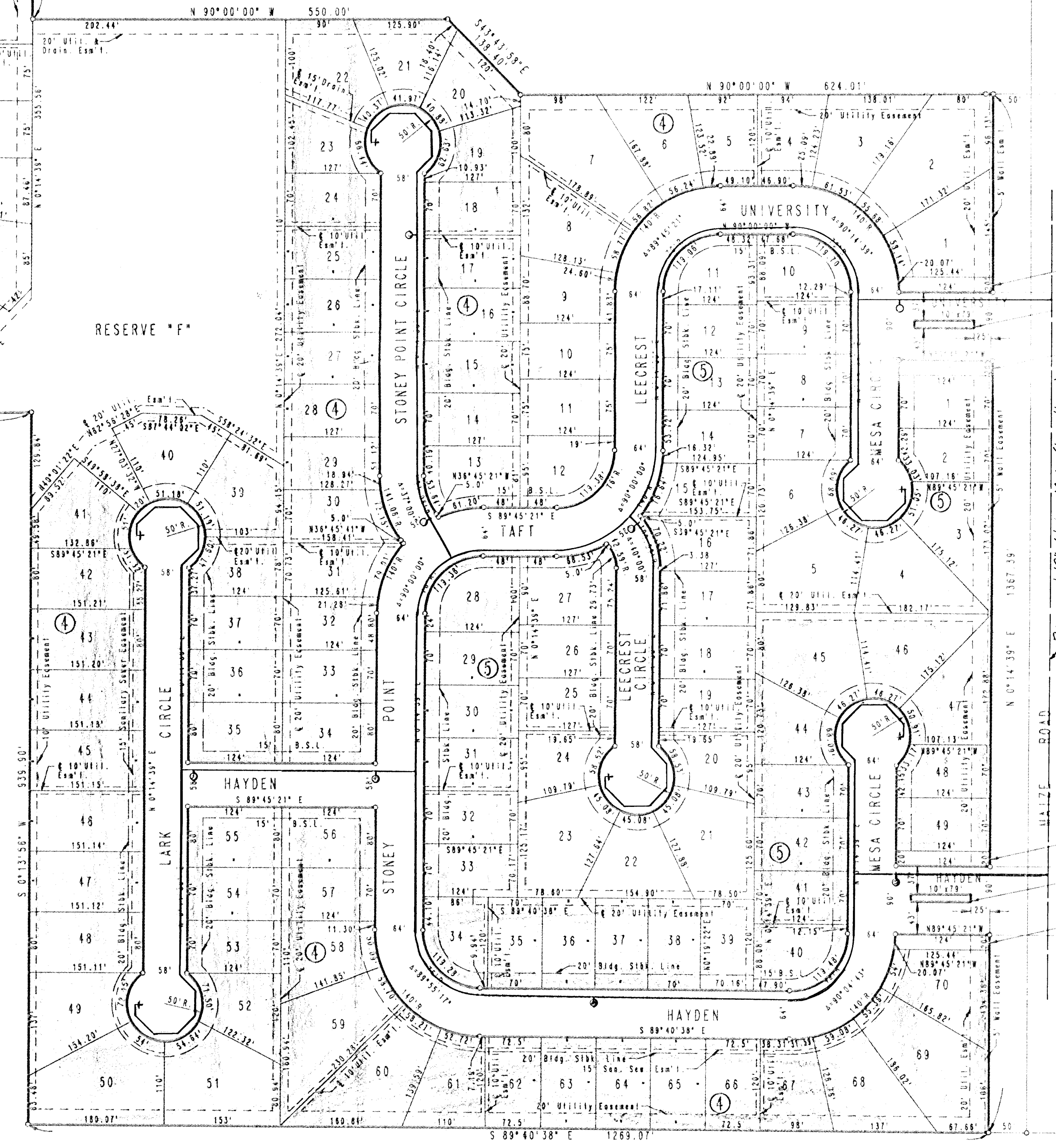
MINIMUM PAD ELEVATION SHALL BE AS FOLLOWS:

BLOCK 2 LOTS 9 THROUGH 17.	ELEVATION	139.2 CITY DATUM AND 1326.6 M.S.L.
LOTS 18 THROUGH 31, AND LOTS 36 THROUGH 44.	ELEVATION	143.0 CITY DATUM AND 1330.4 M.S.L.
BLOCK 4 LOTS 22 THROUGH 29 AND LOTS 39 THROUGH 41.	ELEVATION	139.2 CITY DATUM AND 1326.6 M.S.L.

WATER

[Pattern 1]	PHASE 1
[Pattern 2]	PHASE 2
[Pattern 3]	PHASE 3
[Pattern 4]	PHASE 4
[Pattern 5]	PHASE 5

15  
 7-24-87



RESERVE "G"  
 RESERVE "H"  
 RESERVE "I"  
 RESERVE "J"  
 RESERVE "K"  
 RESERVE "L"

Proposed 16" Water Main (by others)  
 COMPLETE ACCESS CONTROL