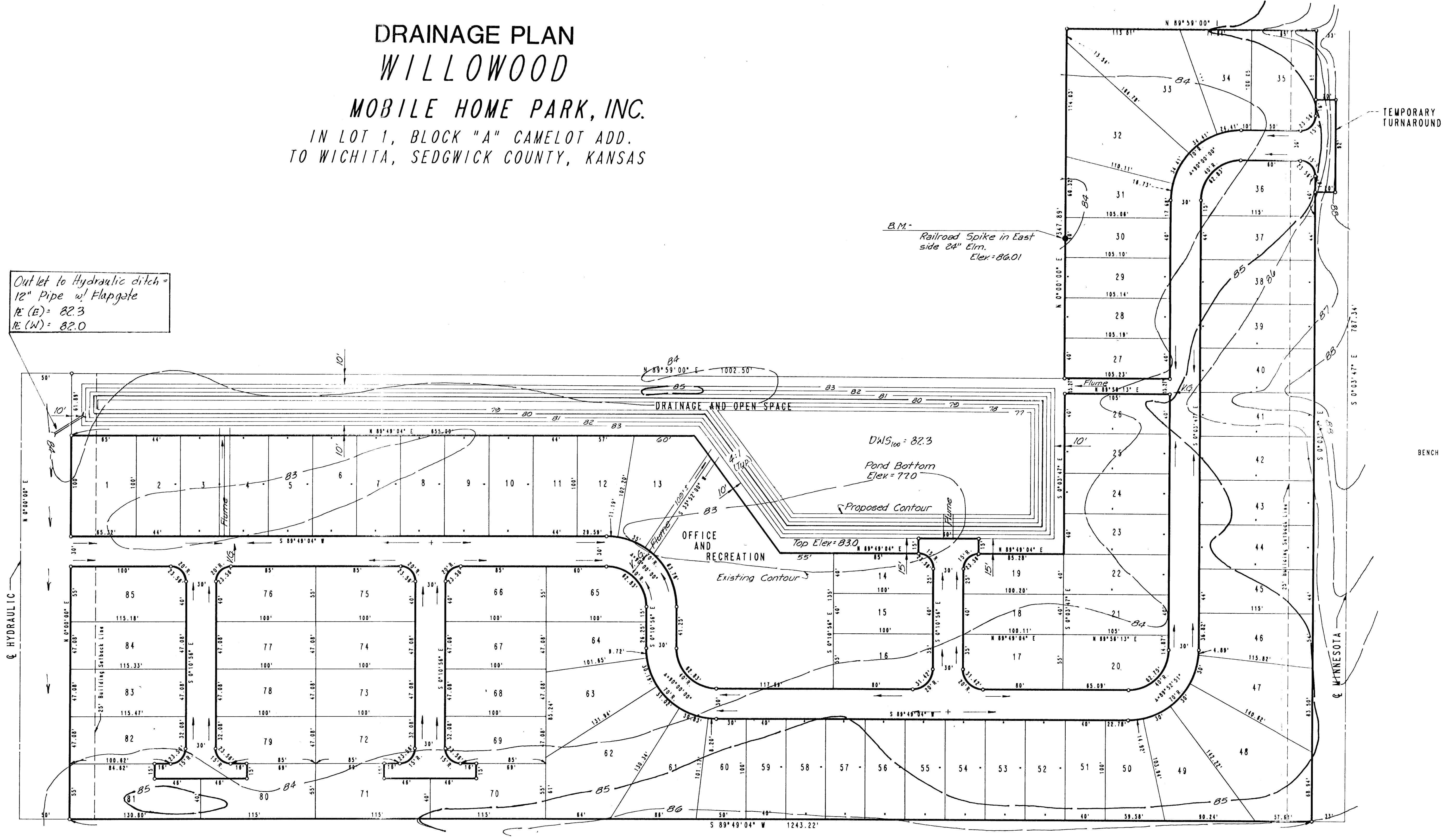


DRAINAGE PLAN WILLOWOOD

MOBILE HOME PARK, INC.
IN LOT 1, BLOCK "A" CAMELOT ADD.
TO WICHITA, SEDGWICK COUNTY, KANSAS

Outlet to Hydraulic ditch =
12" Pipe w/ Flapgate
R_c (E) = 82.3
R_c (W) = 82.0



TEMPORARY
TURNAROUND



SCALE: 1" = 50'

BENCH MARK: CITY B.M. 31 FT. WEST AND 31 FT. SOUTH
OF N.W. CORNER SEC. 15, T28S, R1E
ELEV. = 86.273 CITY DATUM

GENERAL NOTES

1. TOTAL AREA = 14.7 ACRES
2. TOTAL NUMBER OF SPACES = 85
3. DENSITY = 5.78 SPACES PER ACRE
4. ALL ROADWAYS SHALL BE PAVED 29 FT. BACK OF CURB TO BACK OF CURB.
5. EACH SPACE SHALL PROVIDE 2 PAVED PARKING SPACES, A 10 FT. X 20 FT. PATIO AND A 6 FT. X 8 FT. STORAGE BUILDING.