

VICINITY MAP  
2" = 1 MILE

PRELIMINARY PLAT  
**CAMELOT ADDITION**  
TO WICHITA, SEDGWICK COUNTY, KANSAS

LEGAL DESCRIPTION:  
The West half of the NW 1/4 of Sec. 15, T28S, R1E of the 6th PM, Sedgwick County, Kansas, except the South 120.48' and except the North 659.4' and except the South 348' of the North 1007.4' of the West 1042.5' thereof, except the West 40' for road.

MOEHRING & ASSOCIATES  
433 S. HYDRAULIC  
#A 79-152-ZC

CONSULTING ENGINEERS  
WICHITA, KANSAS  
5-27-81

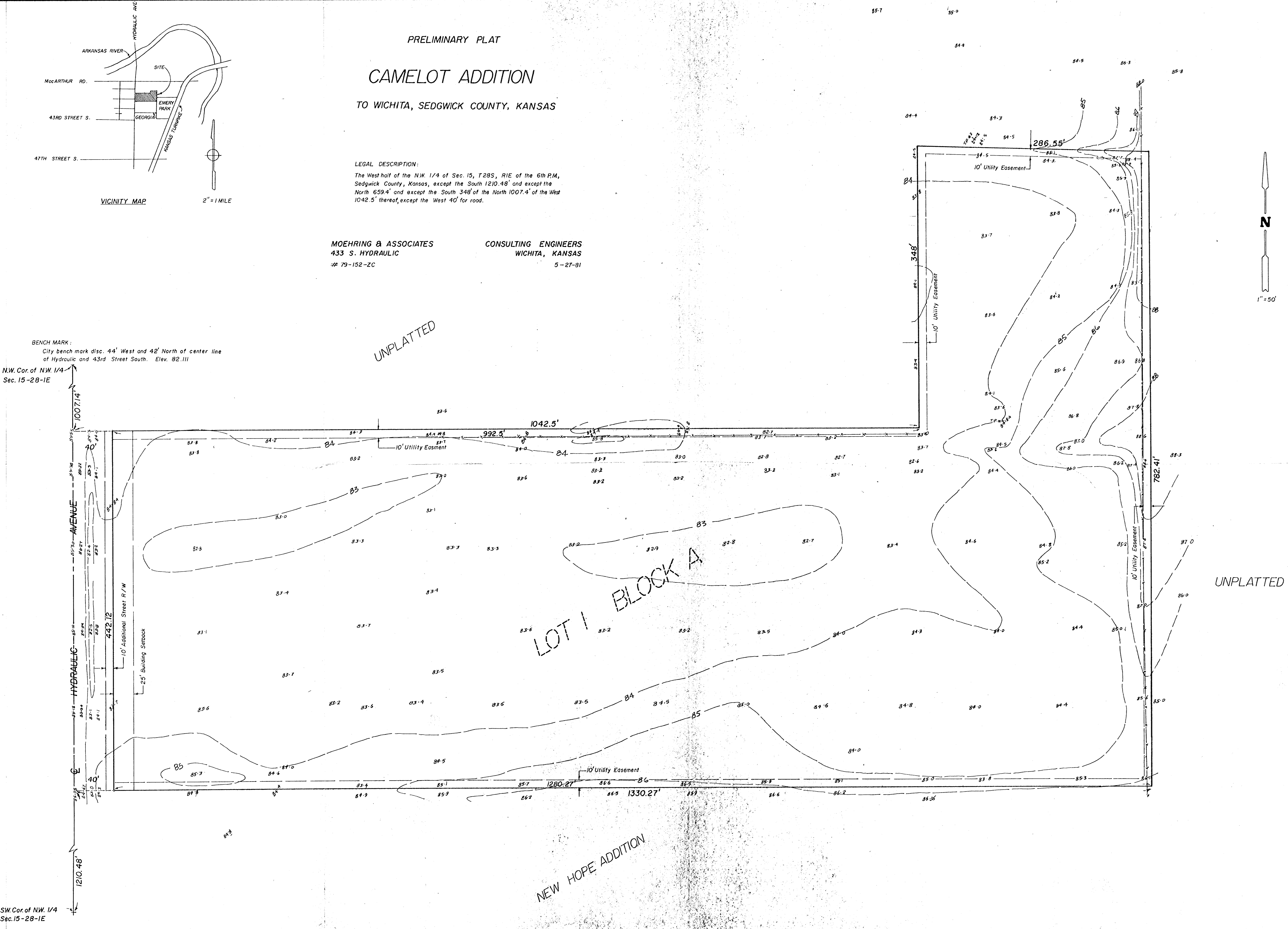
BENCH MARK:  
City bench mark disc. 44' West and 42' North of center line of Hydraulic and 43rd Street South. Elev. 82.111  
N.W. Cor. of NW 1/4 Sec. 15-28-1E

UNPLATTED

LOT 1 BLOCK A

NEW HOPE ADDITION

UNPLATTED



SW Cor. of NW 1/4 Sec. 15-28-1E