

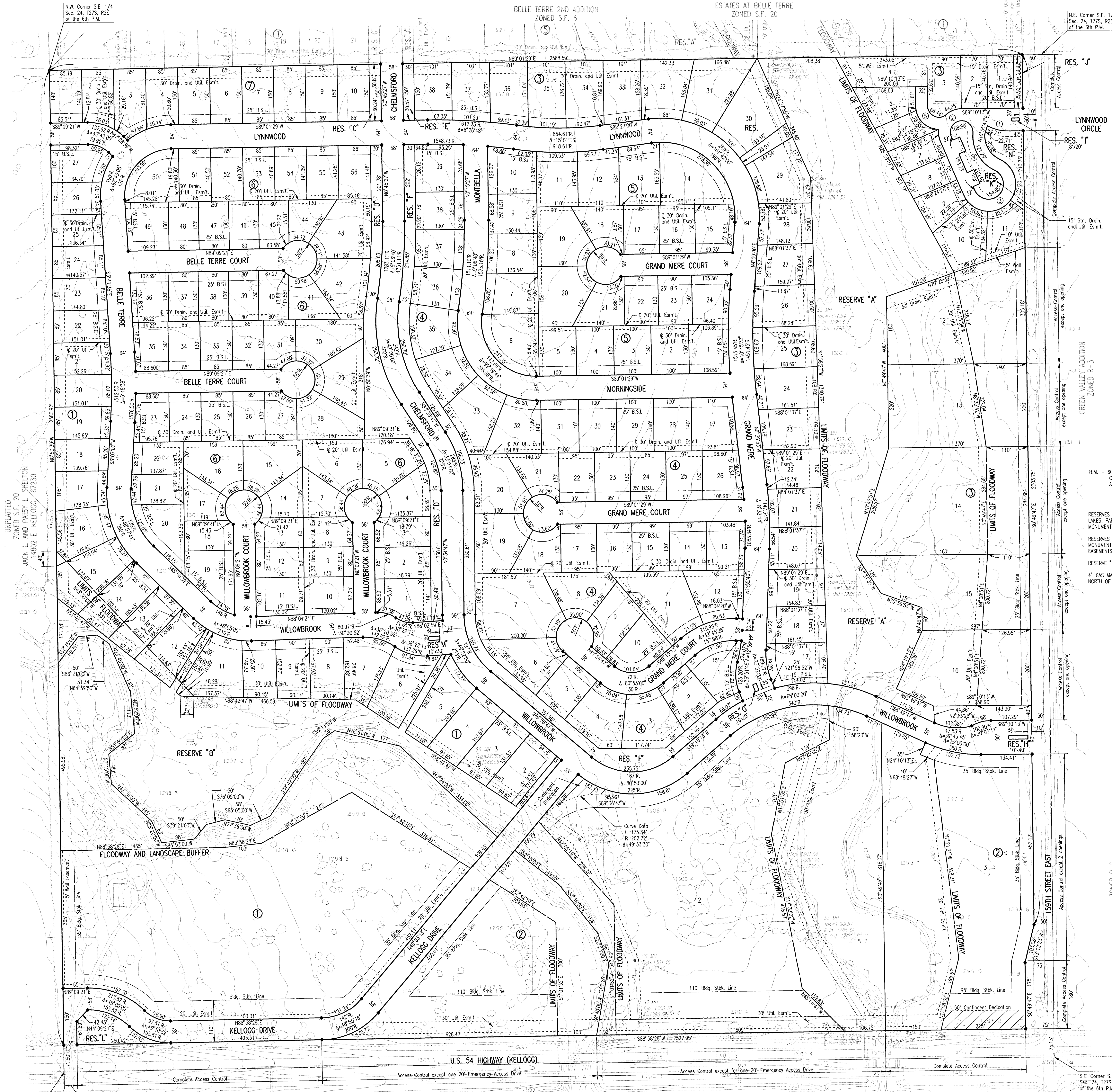
PRELIMINARY PLAT OF  
**BELLE TERRE SOUTH**  
 AN ADDITION TO SEDGWICK COUNTY, KANSAS

OWNER: DOWNING DEVELOPMENT, L.L.C.  
 c/o RANDY DOLL  
 3595 N. WEBB ROAD  
 WICHITA, KANSAS 67226

ENGINEERS: PROFESSIONAL ENGINEERING CONSULTANTS, P.A.  
 303 S. TOPEKA  
 WICHITA, KANSAS 67202

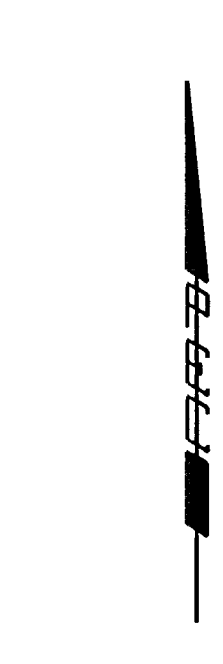
BELLE TERRE 2ND ADDITION  
 ZONED S.F. 6

ESTATES AT BELLE TERRE  
 ZONED S.F. 20



CURVE DATA

Curve No. 1	R=104.50'	Δ=30°00'00"
Curve No. 2	R=62.00'	Δ=117°45'45"
Curve No. 3	R=72.00'	Δ=22°31'25"
Curve No. 4	R=100.00'	Δ=67°29'43"
Curve No. 5	R=62.00'	Δ=87°04'31"



SCALE: 1"=100'  
 2-14-97

TOPOGRAPHY DATE: JULY, 1984  
 CONTOUR INTERVAL = 2 FEET

B.M. - 604 NAIL ON TOP OF ORANGE POST 15' NORTH  
 OF N.W. CORNER WEST BOUND U.S. 54 BRIDGE,  
 APPROX. 500' WEST OF 158TH STREET EAST.  
 ELEV.=1301.61 M.S.L.

RESERVES "A" AND "B" ARE FOR FLOODWAYS, DRAINAGE,  
 LAKES, PANS, WALKWAYS, RECREATION FACILITIES, ENTRY  
 MONUMENTS, AND UTILITIES CONFINED TO EASEMENTS.

RESERVES "C" THRU "J" ARE FOR LANDSCAPING, ENTRY  
 MONUMENTS, WALKWAYS, AND UTILITIES CONFINED TO  
 EASEMENTS.

RESERVE "K" ALSO PERMITS OFF-STREET PARKING.

4" GAS MAIN AT CHELMSFORD AND BELLE TERRE STREET  
 NORTH OF PLAT ON BELLE TERRE 2ND ADDITION.

DSNR: SANDOZ, OPER: DEP SCALE: 1"=100.00  
 C:\1996\98220\PRELIM\DWG\_02-14-1997\_90452.dwg

S.E. Corner S.E. 1/4  
 Sec. 24, T25, R2E  
 of the 6th P.M.

UNPLATTED  
 ZONED S.F. 20