

State of Kansas

Bill Graves



Governor

RECEIVED

MAR 31 1997

Department of Health and Environment

James J. O'Connell, Secretary

March 27, 1997

Albertson's Inc.
250 Park Center Blvd.
Boise, Idaho 83726

Re: Kansas Water Pollution Control General Permit for Stormwater Runoff
from Construction Activities, General Permit No.: S-MCSTφ-9601-1,
Kansas Permit No.: S-LA20-0001, Amidon Plaza Addition

Dear Permittee:

You have fulfilled all filing requirements for the Kansas Water Pollution Control Permit for Stormwater Runoff from Construction Activities. We are pleased to forward your new permit. While it is permissible to make as many copies as needed, you need to retain the original permit for your files.

We suggest you carefully read the terms and conditions of your permit to ensure your Stormwater Pollution Prevention Plan meets all the requirements of the permit. The terms and conditions of the attached permit are enforceable under State law.

Please remember to send a copy of page 1 and the Notice of Termination (NOT), located on page 2, to KDHE when coverage under this general permit is no longer needed. The NOT must contain an original signature.

We look forward to working with you in achievement and maintenance of high quality water for the State of Kansas. If you have any questions concerning this permit, please contact David Freise at (913) 296-5557.

Sincerely,

A handwritten signature in cursive script that reads "Karl Mueldener".

Karl Mueldener, P.E.
Director, Bureau of Water

dg

Enclosure

pc: South Central District Office
Chris Breitenstein, City of Wichita
Permit File

General Permit No.: S-MCSTφ-9601-1

Kansas Permit No.: S-LA20-0001

Federal Permit No.: KS-R100032

Kansas Water Pollution Control General Permit
and Authorization to Discharge

STORMWATER RUNOFF FROM CONSTRUCTION ACTIVITIES

Under the National Pollutant Discharge Elimination System

Pursuant to the Provisions of Kansas Statutes Annotated 65-164 and 65-165, the Federal Water Pollution Control Act as amended (33 U.S.C. 1251 et seq.; the "Clean Water Act"),

Owner: Albertson's Inc.
Owner's Address: 250 Park Center Blvd.
Boise, Idaho 83726
Name of Contact Person: Ric Guardado Phone Number: 918-621-6500
Name of Facility/Project to be Constructed: Amidon Plaza Addition
Facility/Project Address or Location: 1910 W. 21st. St., Wichita
Sedgwick County
Receiving Stream & Basin: Little Arkansas River via Wichita storm sewer,
Little Arkansas River Basin

is authorized to discharge stormwater runoff from construction activities at the site described herein in accordance with the limitations and conditions set forth in this general NPDES permit and shall comply with Kansas Surface Water Quality Standards (K.A.R. 28-16-28 et seq.).

The general NPDES Permit S-MCSTφ-9601-1 is effective January 1, 1997 through December 31, 2001. This general NPDES permit authorization supersedes all previous permits, agreements, decrees, or orders, in effect between KDHE and the permittee for the discharge of stormwater runoff from construction activities at the site described herein. The use of this general NPDES permit for the project described herein shall become effective on March 27, 1997, and shall expire on December 31, 2001.

PROJECT DESCRIPTION:

55,068 sq. ft. grocery store with adjoining parking, associated driveways and two out parcels.



Secretary, Kansas Department of Health and Environment

March 27, 1997
Date

THE CITY OF WICHITA



DEPARTMENT OF PUBLIC WORKS
ENGINEERING DIVISION,
CITY HALL - SEVENTH FLOOR
455 NORTH MAIN STREET
WICHITA, KANSAS 67202
(316) 268-4501
FAX (316) 268-4114

April 14, 1997

BSW Architects
Attn: Howard Fleming
One West Third Street
Suite 100
Tulsa, Oklahoma 74103-3505

RE: SS & SWS to serve Albertson's at 21st & Amidon

We have reviewed the plans for SS & SWS extension to serve the Albertson's at 21st & Amidon and offer the following comments:

1. The project is identified as City of Wichita private project 708PPS. At the final submittal, only the pertinent sheets need to be submitted and all sheets need to have the private project number on them.
2. The mark-up set has been attached and this mark-up set needs to accompany the final plan submittal so that we may be assured that all comments have been addressed.
3. I am also attaching a copy of our record of paving the decel lane on the north side of 21st Street. Some of your alignments on existing storm sewer do not match with our record. This drawing also shows the designed grade of the decel lane.
4. The storm sewers where they cross the street R/W to existing catch basins really need profile information to show possible conflict with existing utilities. We are especially concerned about the 12" water on the north side of 21st Street.
5. We will require the contractor to submit bonds and notify us who will be the inspecting engineer for the SWS in the R/W.
6. Since the on-site SWS will be privately owned and maintained, we will approve the plan as submitted. However the owner is hereby advised that some of the lines are not designed to City standard. Specifically some of the pipe slopes are less than the minimum which will assure a self-clean design during low flow.
7. As for the 8" SS, since the Rapid Muffler building will be connected to this new line, the first portion of the line should be treated as a main. We recommend a manhole be constructed at Sta 1+06 instead of the CO as shown. The 8" SS will need to be inspected by a private



engineering firm with as built, certificate of completion, air test for the SS and vacuum test for the manhole submitted after the construction is completed. The owner is hereby advised that if ever they consider to change the 8" SS to a public line, TV test will be required.

8. Please note other comments on the mark-up set.

Should you have any questions regarding the above comments, please call me at 268-4236.

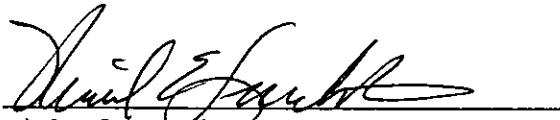
Sincerely,

Vicky Huang *62*

Vicky Huang, P.E.
Subdivision Engineer

VH:bjm

APPROVED BY:



Michael E. Lindébak, P.E.
City Engineer



ONE WEST THIRD STREET PHONE 918 582-8771
SUITE 100 FAX 918 587-3594
TULSA, OKLAHOMA 74103 - 3505 EOE/AA/M/F/D/V

Date: 7/15/97 File in: 12.0Transmittal # **26119**
Client Type: **Albertsons**
Program:
Project Name: **Store # 2250**
Project #: **27000038 .707 Wichita,KS**
From: Howard Fleming Ext: 3687
To: **Vicky Huang**
City of Wichita
455 North Main Street

Wichita **KS 67202**
Phone: (316) 268-4501 Fax #: (316) 268-4663
Country:
Ship Via: AIRBORNE STANDARD
RE: CCD S-04

Letter of Transmittal

We transmit the following items:

CCD S-04

Comments:

For your records. This information will be reflected on the Record Drawings at the end of construction.

RECEIVED

JUL 17 1997

CITY - ENGINEERING

cc Ric Guardado
Paul McManus
Tara Grimaldi

This message is intended only for the use of the individual to whom it is addressed. It may contain information that is privileged, confidential and exempt from disclosure under applicable law. If you have received this in error, please notify us immediately by telephone and return the original to us at the address above. Thank you.

Construction Change Directive

AIA Document G714 - Electronic Format

(This document replaces AIA Document G713, Construction Change Authorization.)

OWNER
ARCHITECT
CONTRACTOR
FIELD
OTHER D. J. Christie
Brett Kellogg

THIS DOCUMENT HAS IMPORTANT LEGAL CONSEQUENCES; CONSULTATION WITH AN ATTORNEY IS ENCOURAGED WITH RESPECT TO ITS COMPLETION OR MODIFICATION. AUTHENTICATION OF THIS ELECTRONICALLY DRAFTED AIA DOCUMENT MAY BE MADE BY USING AIA DOCUMENT D401.

PROJECT:

(name, address)
ALBERTSONS #2250
WICHITA, KANSAS

DIRECTIVE NO.: S-04

DATE: 07/03/97

TO CONTRACTOR:

(name, address)
KEY CONSTRUCTION
741 WEST 2ND
WICHITA, KS 67203

ARCHITECT'S PROJECT NO: 27000038

CONTRACT DATE:

CONTRACT FOR: GENERAL CONSTRUCTION

You are hereby directed to make the following change(s) in this Contract:

SITE: SEE ATTACHED CONSTRUCTION CHANGE DIRECTIVE NARRATIVE FOR DESCRIPTION OF CHANGE

PROPOSED ADJUSTMENTS

1. The proposed basis of adjustment to the Contract Sum or Guaranteed Maximum Price is:

Lump Sum (increase) (decrease) of \$.

Unit Price of \$ per .

as provided in Subparagraph 7.3.6 of AIA Document A201, 1987 edition.

as follows:

TO BE DETERMINED.

2. The Contract Time is proposed to (be adjusted)(remain unchanged). The proposed adjustment, if any, is (an increase of N/A days) (a decrease of N/A days).

When signed by the Owner and Architect and received by the Contractor, this document becomes effective IMMEDIATELY as a Construction Change Directive (CCD), and the Contractor shall proceed with the change(s) described above.

Dennis C. Woody ARCHITECT
Albertsons, Inc. OWNER

Address: One W Third St. Tulsa, OK 74103-3508
Address 250 Parkcenter Blvd Boise, ID 83726

BY:  BY: _____

Howard W. Fleming, Jr. DATE: 07/03/97
Douglas Gibson DATE

Signature by the Contractor indicates the Contractor's agreement with the proposed adjustments in Contract Sum and Contract Time set forth in this Construction Change Directive.

Key Construction
CONTRACTOR

Address: 741 West 2nd
Wichita, KS 67203

BY: _____

Kent Doughty

AIA DOCUMENT G714 - CONSTRUCTION CHANGE DIRECTIVE - 1987 EDITION - AIA - COPYRIGHT 1987 • THE AMERICAN INSTITUTE OF ARCHITECTS, 1735 NEW YORK AVENUE, N.W., WASHINGTON, D.C., 20006-5292. WARNING; Unlicensed photocopying violates U.S. copyright laws and is subject to legal prosecution. This document was electronically produced with permission of the AIA and can be reproduced without violation until the date of expiration as noted below.

Electronic Format G714 -1987

YOU ARE HEREBY DIRECTED TO MAKE THE FOLLOWING CHANGES IN THIS CONTRACT:

SITE

General:

1. The following are plan revisions resulting from various causes, such as an existing storm drain system damaged by demolition / construction activities and differing site conditions, as well as late coordination from KG&E and SW Bell and that related to (D.J. Christie's) Shops A Building and the site pylon signs.

Documents Affected:

C201, SITE, PAVING, SIGNAGE AND STRIPING PLAN
C311, GRADING AND DRAINAGE PLAN
C401, UTILITY PLAN
ES101, SITE LIGHTING PLAN
LS102, LANDSCAPE PLAN
IR102, IRRIGATION PLAN

Summary:

C201, SITE, PAVING, SIGNAGE AND STRIPING PLAN

1. Revised sidewalk on east side of Amidon (west side of project) to provide proper clearance to two existing fire hydrants found to be encroaching into the originally planned sidewalk alignment.
2. Revised northerly curb where the utility pole guy relocation could not be made to clear the original curb alignment. This change caused the elimination of one parking stall and the modification of the island at the east end of the most northerly group of angled parking stalls.
3. Per D.J. Christie's instruction, reduce the depth of the parking stalls located directly south of Shops A to 16 feet in length, thereby increasing the walkway width adjacent to the building.
4. Revise limits of building / site construction around Shops A, including the responsibility for sidewalk construction westerly and adjacent to Shops A (now in D.J. Christie's contract).
5. Noted protection posts for gas meters at the east end of Shops A, as indicated on Jeff Krehbiel Associates plans.
6. Reflected pylon sign relocation (closer to the westerly property line) in the northwest corner of the site, as directed by Image National.
7. Reflected joint tenant sign relocation at the south central driveway off 21st. Street N., as directed by Image National.

C311, GRADING AND DRAINAGE PLAN

1. Added ~~two~~ *three* (3) grated drop inlets (Points R-1, R-2 & A-1) and related storm drain system (Point R-1 to A-1), replacements for the existing storm drain system (Line R), which was crushed by demolition / construction activities. Refer also to the Summary of Drainage Structures.
2. Revised parking lot grades to create additional cover over the replacement storm drain system (Line R), which was crushed by demolition / construction activities.
3. Per D.J. Christie's instruction, deleted Storm Drain Line C from previous Point C-1 to Point C-3 and relocated Points C-1 and C-2; revised the size, length and slope from C-1 to C-2, as well as revised the pipe length and slope from C-2 to C-3. Refer also to the Summary of Drainage Structures.
4. Corrected three grades just north of the liquor store and add one that was missing.
5. Revised grades along the northerly curb and at the island at the east end of the most northerly group of angled parking stalls, where the utility pole guy relocation would not clear original alignment.
6. Revise the Summary of Drainage Structures to reflect all of the storm drain revisions noted herein.

C401, UTILITY PLAN

1. Added one 4" sanitary sewer lateral stub for Shops A, including a related note about the future grease trap by Shops A contractor.
2. Note secondary electric to Shops A as two (2) 4" PVC conduits.
3. Identify Shops A underground telephone requirements as two (2) 2" PVC conduits.
4. Reflect KG&E gas supply routing clarification to Shops A.
5. Reflect KG&E power supply routing clarification to Albertson's.
6. Reflect Southwestern Bell Telephone routing clarification to Albertson's and note underground telephone requirements as two (2) 2" PVC conduits.

ES101, SITE LIGHTING PLAN

1. Reflected pylon sign relocation (closer to the westerly property line) in the northwest corner of the site, as directed by Image National.
2. Reflected joint tenant sign relocation at the south central driveway off 21st. Street N., as directed by Image National.

LS102, LANDSCAPE PLAN

1. Made adjustments for the pylon sign relocation.
2. Made adjustments for the joint tenant sign relocation.
3. Made adjustments for the sidewalk widening at the two existing fire hydrants along Amidon.
4. Made adjustments for the northerly curb and island modifications.
5. Made adjustments for the joint tenant sign relocation.

IR102, IRRIGATION PLAN

1. Made adjustments for the northerly island modification.

Enclosures:

Sheets C201.4-1 through 7, C311.4-1 through 5, C401.4-1&2, ES101.4-1&2, LS102.4-1 through 3 and IR102.4-1



43' F-F

15' 4' 11' 13'

3' x 7' Water Vault (approximate)

Dileneator Sign

UG. Gas Line

8" SS Line

2A
C202

2

30 +

29

25'

UG. Gas Line

EXISTING FIRE HYDRANT

L.P.

Curb

Curb

UG. Gas Line

UG. Water Line

H. Elev. Line

Access Control Except for Two Openings

DECELERATION SANE

360.90

13° 53' 20" S

104.19

2.5'

9

25'

Contingent C.L. future Street & per Film

LOCATION:
310' NORTH OF NE CORNER
OF AMIDON AND 21ST STREET
NORTH

ALBERTSON'S - WICHITA, KS

SITE, PAVING, SIGNAGE AND
STRIPING PLAN - CCD NO. S-04

DESIGNED BY:
RHR
APPROVED BY:
HWF
DATE:
07/03/97

JOB NUMBER
27000038.700
STORE NUMBER
2250
SCALE
1" = 20'

SHEET
NUMBER
C201.4-1

LOCATION:
NE CORNER OF AMIDON
AND 21ST STREET NORTH



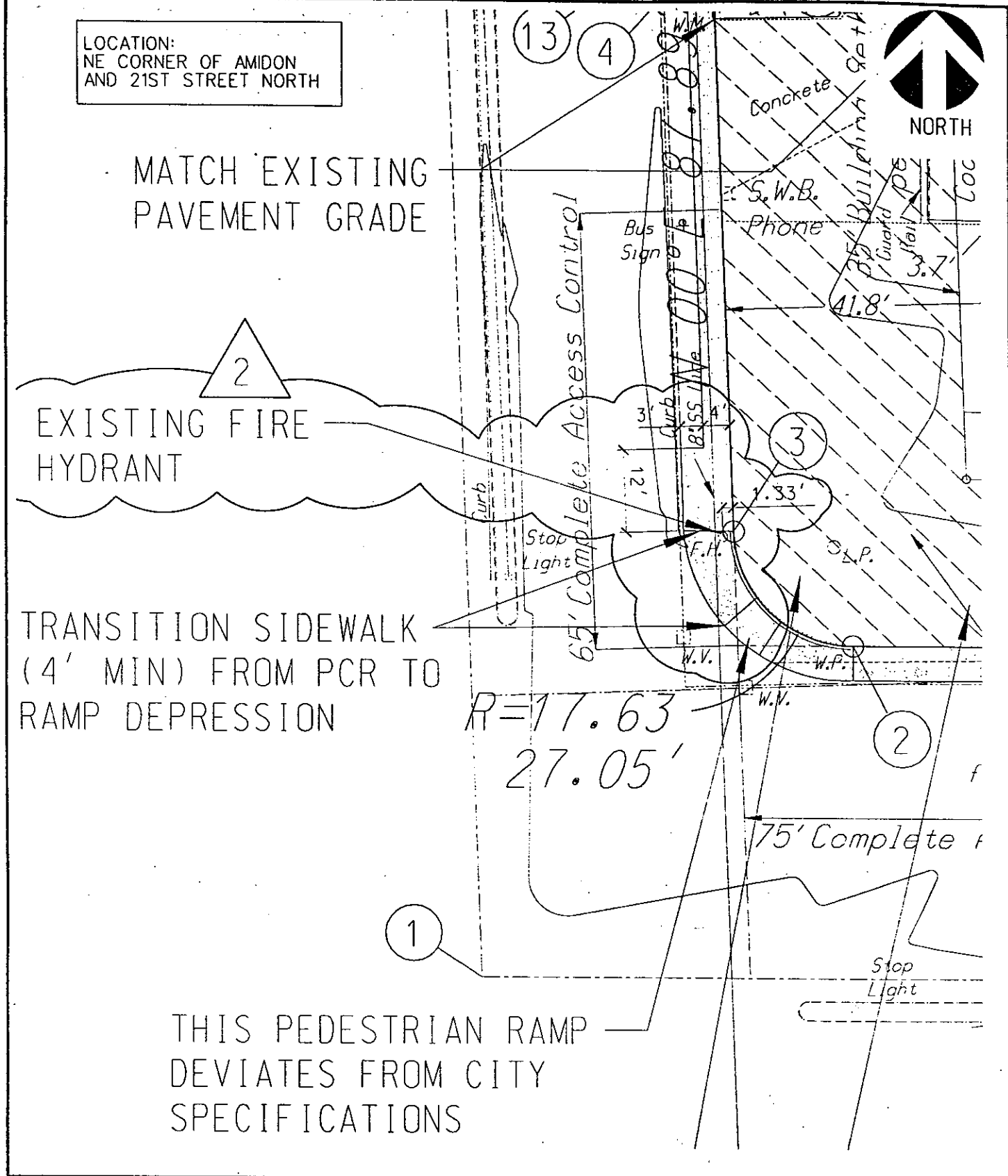
MATCH EXISTING
PAVEMENT GRADE

2
EXISTING FIRE
HYDRANT

TRANSITION SIDEWALK
(4' MIN) FROM PCR TO
RAMP DEPRESSION

$R=17.63$
 $27.05'$

THIS PEDESTRIAN RAMP
DEVIATES FROM CITY
SPECIFICATIONS



ALBERTSON'S - WICHITA, KS

SITE, PAVING, SIGNAGE AND
STRIPING PLAN - CCD NO. S-04

DESIGNED BY: RHR	JOB NUMBER 27000038.250
APPROVED BY: HWF	STORE NUMBER 2250
DATE: 07/03/97	SCALE 1" = 20'
SHEET NUMBER	C201.4-2

LULL JUL 1997

ITE 7

7	N 5515.44	E 8821.74	PROPERTY CORNER
8	N 5049.51	E 8838.26	PROPERTY CORNER
9	N 5188.43	E 8463.12	BUILDING CORNER
10	N 5448.43	E 8463.12	BUILDING CORNER
11	N 5448.43	E 8667.78	BUILDING CORNER
12	N 5188.43	E 8667.78	BUILDING CORNER
13	N 5154.25	E 8027.26	POINT OF CURVATURE
14	N 5231.09	E 8028.81	POINT OF CURVATURE
15	N 5373.41	E 8026.97	POINT OF CURVATURE
16	N 5486.61	E 8008.02	POINT OF CURVATURE
17	N 5535.70	E 8835.01	POINT OF CURVATURE
18	N 5434.70	E 8839.01	POINT OF CURVATURE
19	N 5220.20	E 8846.39	POINT OF CURVATURE
20	N 5119.20	E 8850.03	POINT OF CURVATURE
21	N 5043.99	E 8501.54	POINT OF CURVATURE
22	N 5032.41	E 8380.91	POINT OF CURVATURE
23	N 5047.72	E 8174.09	POINT OF CURVATURE
24	N 5095.43	E 8169.34	BACK OF CURB ("BOC" TYPICAL)
25	N 5200.43	E 8087.79	10' RADIUS POINT
26	N 5207.20	E 8077.83	BOC
27	N 5251.93	E 8076.21	BOC
28	N 5342.62	E 8047.91	BOC
29	N 5393.72	E 8046.06	BOC
30	N 5401.36	E 8057.79	8' RADIUS POINT
31	N 5461.40	E 8055.54	8' RADIUS POINT
32	N 5505.43	E 8044.20	BOC
33	N 5505.43	E 8399.45	POC OF 20' RADIUS
34	N 5499.43	E 8427.38	POC OF 48' RADIUS
35	N 5499.43	E 8800.03	POINT OF CURVATURE
36	N 5465.93	E 8796.27	2.5' RADIUS POINT
37	N 5288.04	E 8799.91	BOC
38	N 5183.93	E 8811.41	POINT OF CURVATURE
39	N 5152.66	E 8819.41	POINT OF CURVATURE
40	N 5094.41	E 8819.41	BOC
41	N 5069.43	E 8799.52	BOC
42	N 5069.43	E 8478.52	BOC
43	N 5072.61	E 8467.13	POINT OF CURVATURE
44	N 5067.41	E 8415.95	POINT OF CURVATURE
45	N 5074.43	E 8407.85	BOC
46	N 5074.43	E 8236.85	BOC
47	N 5156.18	E 8196.51	3.3' RADIUS POINT
48	N 5098.68	E 8196.01	3.3' RADIUS POINT
49	N 5159.43	E 8081.39	POINT OF CURVATURE
50	N 5190.43	E 8063.35	POINT OF CURVATURE

CONSTRUCTION NOTES:

1 PROVIDE A SAWED CONTRACTION JOINT WHICH CONTINUES THROUGH ADJACENT CURB

2 CONSTRUCT PARTIAL APRON IN ACCORDANCE WITH CITY STANDARD SPECIFICATION FOR COMMERCIAL RADIIUS DRIVEWAY

- TRAFFIC FLOW ARROW (RE: 14/C202)
- STOP BAR (RE: 15/C202)
- TRAFFIC SIGN
- PARKING LOT LIGHTING (RE: ES101)
- FUTURE PARKING LOT LIGHTING (RE: ES101)
- CITY WHEELCHAIR RAMP
- SLOPED SIDEWALK (20:1 MAX.)
- EXPANSION JOINT

PARKING CRITERIA:
NOTE: CROSS ACCESS AND PARKING AGREEMENT EXISTS

	LOT 1	LOT 2	LOT 3	TOTAL
RATIO, PARKING/GROSS S.F.	1/200	1/200	1/200	1/200
PARKING SPACES REQUIRED:	275	22	14	311
STANDARD PARKING PROVIDED:	342	9	58	409
ACCESSIBLE PARKING PROVIDED:	9	-	2	11
TOTAL PARKING SPACES PROVIDED:	351	9	60	420

PROJECT BENCHMARK:
CITY OF WICHITA DISC ON S.E. CORNER OF THE LITTLE ARKANSAS RIVER BRIDGE LOCATED ON 21ST STREET NORTH, ELEV. = 1313.71 MSL

06/25/97	CCD NO. S-03
05/14/97	CCD NO. S-01, CITY CORRECTIONS, UPDATED TOPE
04/02/97	ISSUED FOR BID AND PERMIT
2/14/97	ISSUED FOR REVIEW

NO. DATE DESCRIPTION REVISIONS

AMIDON PLAZA ADDITION
WICHITA, KANSAS

SITE, PAVING, SIGNAGE AND STRIPING PLAN



<h1>ALBERTSON'S - WICHITA, KS</h1> <h2>SITE, PAVING, SIGNAGE AND STRIPING PLAN - CCD NO. S-04</h2>	DESIGNED BY: RHR	JOB NUMBER 27000038.250
	APPROVED BY: HWF	STORE NUMBER 2250
	DATE: 07/03/97	SCALE NONE
	SHEET NUMBER	C201.4-4

50KT

ALBERTSONS

55,068 SF
FF= 14.50



NORTH

TRASH COMPACTOR

LOADING DOCK

LOT 1

EXPANSION JOINT

EXIT

SHOPS A
FF= 14.50
NOT IN CONTRACT

VAN ACCESSIBLE

PROTECTION POSTS

RE: JEFF KREHBIEL ASSOC. PLANS

CONTINGENT C.O.W. DEDICATION

ALBERTSON'S - WICHITA, KS

SITE, PAVING, SIGNAGE AND STRIPING PLAN - CCD NO. S-04

DESIGNED BY:
RHR

JOB NUMBER
27000038.707

APPROVED BY:
HWF

STORE NUMBER
2250

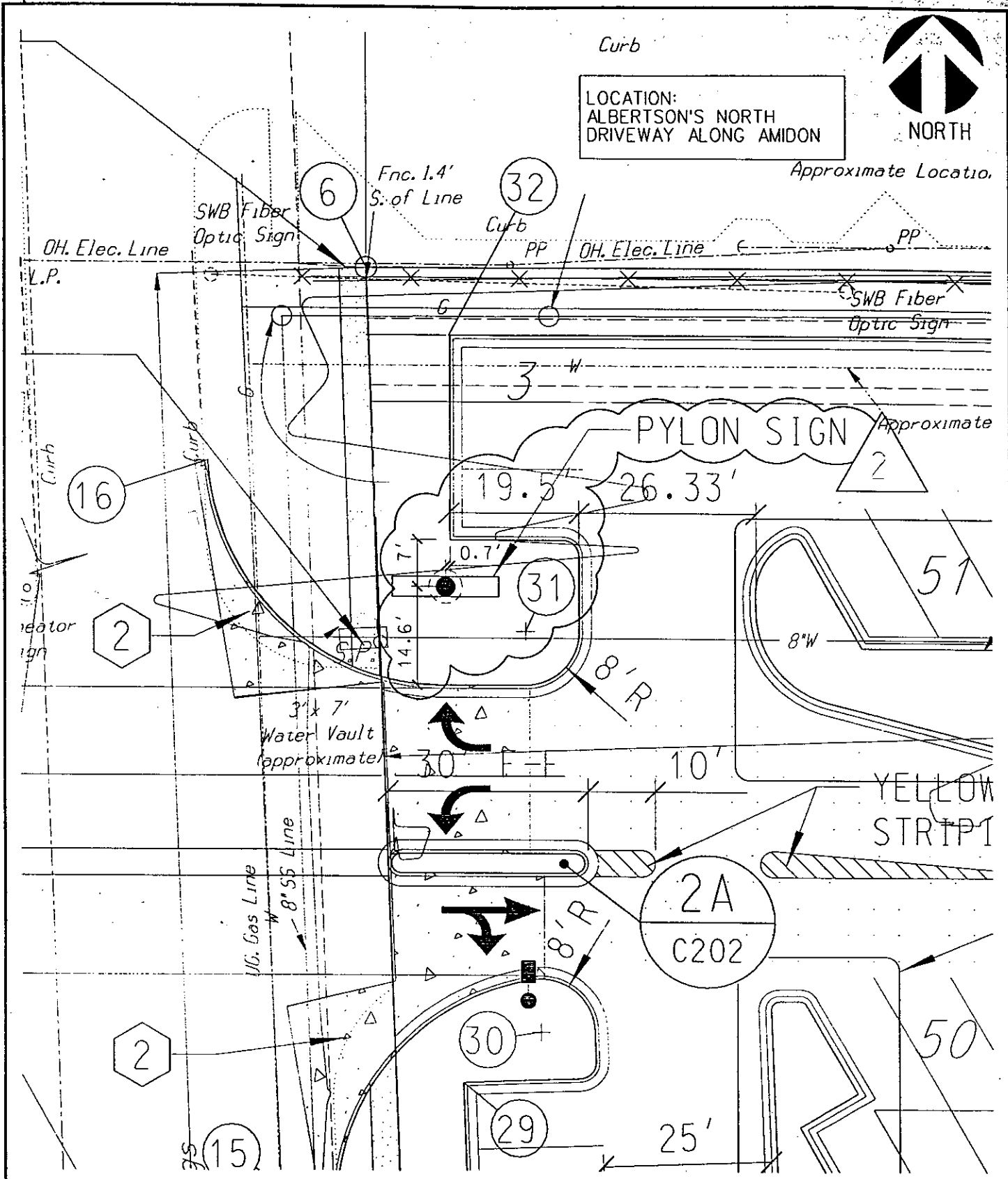
DATE:
07/03/97

SCALE
1" = 40'

SHEET
NUMBER

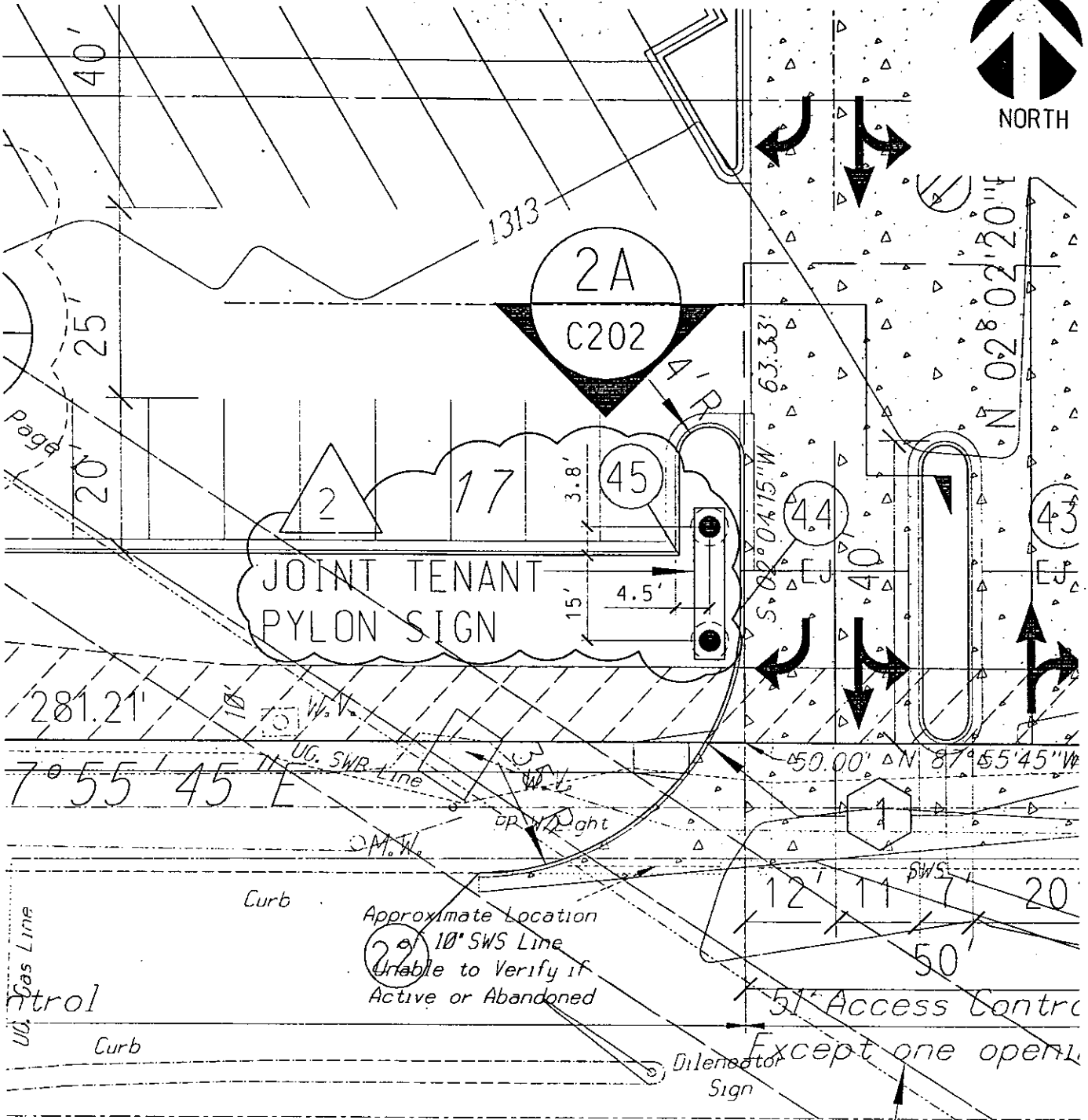
C201.4-5

ALBERTSONS/CIVIL



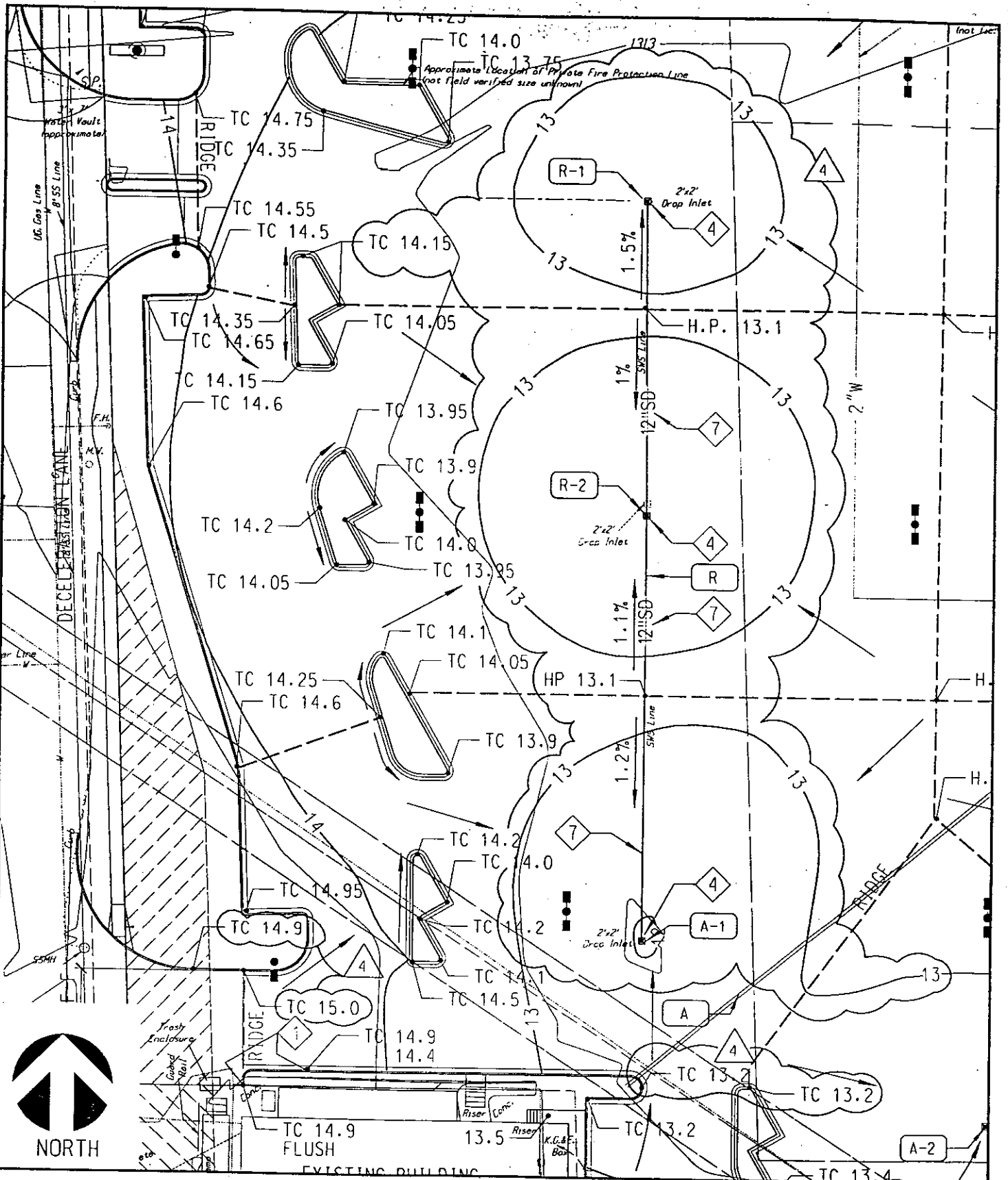
ALBERTSON'S-WICHITA, KS
 SITE, PAVING, SIGNAGE AND
 STRIPING PLAN - CCD NO. S-04

DESIGNED BY: RHR	JOB NUMBER 27000038.250
APPROVED BY: HWF	STORE NUMBER 2250
DATE: 07/03/97	SCALE 1" = 20'
SHEET NUMBER	C201.4-6



21 ST STREET N.

ALBERTSON'S - WICHITA, KS SITE, PAVING, SIGNAGE AND STRIPING PLAN - CCD NO. S-04	DESIGNED BY: RHR	JOB NUMBER 27000038.250
	APPROVED BY: HWF	STORE NUMBER 2250
	DATE: 07/03/97	SCALE 1" = 20'
	SHEET NUMBER	C201.4-7



ALBERTSON'S - WICHITA, KS

GRADING AND DRAINAGE PLAN CCD NO. S-04

DESIGNED BY: RHR	JOB NUMBER 27000038.708
APPROVED BY: HWF	STORE NUMBER 2250
DATE: 07/03/97	SCALE 1" = 40'
SHEET NUMBER	C311.4-1

ALBERTSON'S - WICHITA, KS

GRADING AND DRAINAGE PLAN

CCD NO. S-04

DESIGNED BY:
RHR

JOB NUMBER
27000038.707 & 708

APPROVED BY:
HWF

STORE NUMBER
2250

DATE:
07/03/97

SCALE
NONE

SHEET
NUMBER

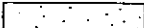
C311.4-2

SUMMARY OF DRAINAGE STRUCTURES:

LINE	UPSTREAM POINT	DESCRIPTION	STANDARD DESIGN REFERENCE	LOCATION (COORDINATES)	UPSTREAM POINT FLOWLINE ELEVATION	TOP OR SURFACE ELEVATION	DOWNSTREAM POINT	PIPE LENGTH (LN LF)	PIPE SIZE AND MATERIAL	PIPE CLASS	PIPE SLOPE	COMMENTS
B	R-1	GRADED DROP INLET	BROOKS 2424	N 5424.75 E 8138.50	11.02	12.60	R-2	95	12" DIP	50	0.29%	
R	R-2	GRADED DROP INLET	BROOKS 2424	N 5330.00 E 8199.50	10.75	12.50	A-1	129	12" DIP	50	0.29%	
A	A-1	GRADED DROP INLET	BROOKS 2424	N 5201.00 E 8199.50	10.35	12.20	A-2	118	12" DIP	50	0.29%	
A	A-2	GRADED DROP INLET	BROOKS 2424	N 5145.68 E 8303.42	10.01	11.39	A-3	144	12" DIP	50	0.29%	
A	A-3	TYPE 22 RADIUS CURB INLET	RD845	N 5042.72 E 8406.46	9.80	12.75	A-4	75	18" RCP	50	0.36%	M=1, L=6, Z=1
A	A-4	EXISTING MANHOLE	N/A	EXISTING	8.88	12.00	EXISTING	EXISTING	18" RCP	EXISTING	EXISTING	TIE TO EXISTING MANHOLE
B	B-1	GRADED DROP INLET	BROOKS 2424	N 5440.43 E 8369.45	N/A	12.70	B-2	110	12" DIP	50	0.35%	
B	B-2	GRADED DROP INLET	BROOKS 2424	N 5330.43 E 8369.45	10.61	12.70	B-3	110	15" DIP	50	0.35%	
B	B-3	GRADED DROP INLET	BROOKS 2424	N 5220.43 E 8369.45	9.98	12.70	A-3	180	15" DIP	50	0.35%	
C	C-1	SHEDS ROOF DRAIN CONNECTION	N/A	N 5138.95 E 8464.71	N/A	14.40	C-2	3	8" PVC	SCH. 40	2.01	STUB
C	C-2	GRADED DROP INLET	BROOKS 2424	N 5138.95 E 8460.55	10.93	13.85	C-3	5	12" DIP	50	2.01	HYDRAULIC RELIEF STRUCTURE
C	C-3	12" CONCRETE COLLAR	N/A	N 5135.01 E 8461.03	10.50	13.80	EXISTING	116	12" RCP	EXISTING	EXISTING	CONNECT TO EXISTING 12" Z=1
D	D-1	SUMP PUMP MANHOLE	RE: MECH. PLAN	N 5293.57 E 8696.78	10.50	13.77	E-2	103	4"	50	0.40%	FORCE MAIN
E	E-1	ALBERTSON'S ROOF DRAIN CONN.	N/A	N 5186.35 E 8672.78	N/A	13.65	E-2	24	15" DIP	50	0.01%	
E	E-2	GRADED DROP INLET	BROOKS 2424	N 5186.35 LE 8696.78	10.96	13.55	E-3	128	18" RCP	V. 3000-D	0.60%	HYDRAULIC RELIEF STRUCTURE
E	E-3	TYPE 22 CURB INLET	RD846	N 5069.93 E 8648.01	9.94	12.90	E-4	36	18" RCP	V. 3000-D	0.40%	M=5, L=5, Z=1
E	E-4	CURB INLET	EXISTING	EXISTING	9.70	12.95	EXISTING	EXISTING	18" RCP	EXISTING	EXISTING	DRAINS EAST TO LITTLE ARKANSAS RIVER

NOTE: COORDINATES SHOWN ARE TO CENTER OF STRUCTURE. EXCEPT IN THE CASE OF CURB INLETS WHERE COORDINATES ARE TO THE FACE OF CURB

CONSTRUCTION NOTES:

- ① VARY CURB HEIGHT 0"-6" (20:1 MAX. SIDEWALK SLOPE)
- ② FLUSH CONDITION
- ③ EXCAVATE EXISTING FILL SOILS AND REPLACE WITH ENGINEERED FILL (APPROXIMATE BUILDING FOOTPRINT PLUS 5'). PROVIDE LOW VOLUME CHANGE MATERIAL FOR THE UPPER 12" UNDER THE FLOOR SLAB WHERE NOTED THUS 

④ ④ EXISTING DAMAGED DRAINAGE INLET TO BE REPLACED AT NO CHARGE

⑤ EXISTING STORM DRAIN TO REMAIN

② ⑥ PLUG EXISTING STORM DRAIN TO BE ABANDONED WITH CONCRETE AT THESE LOCATIONS

④ ⑦ EXISTING DAMAGED STORM DRAIN TO BE REPLACED AT NO CHARGE

ALBERTSON'S - WICHITA, KS

GRADING AND DRAINAGE PLAN
 CCD NO. S-04

DESIGNED BY: RHR	JOB NUMBER 27000038.708
APPROVED BY: HWF	STORE NUMBER 2250
DATE: 07/03/97	SCALE NONE
SHEET NUMBER	C311.4-3

ENCLOS
FF=14.5



NORTH

50KT

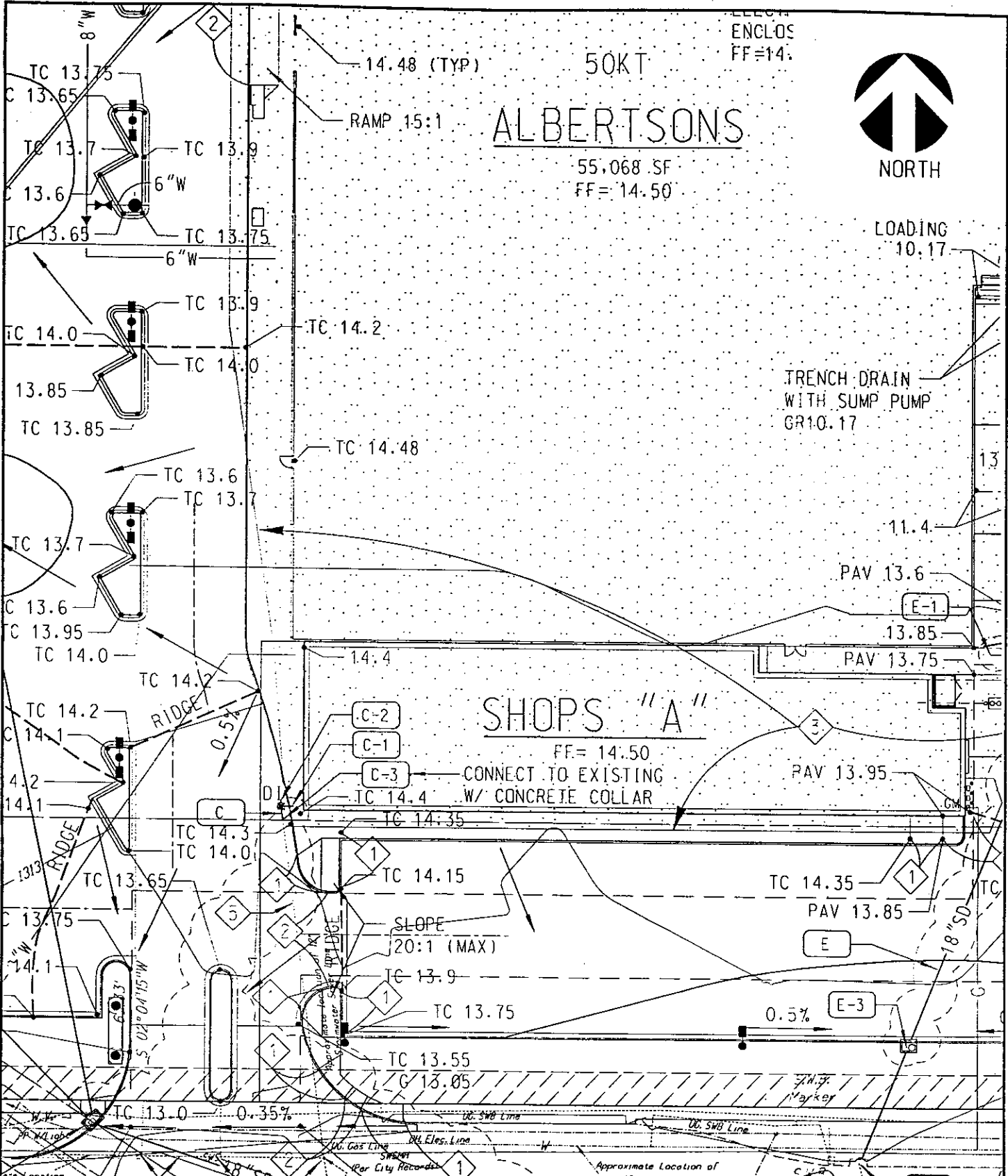
ALBERTSONS

55,068 SF
FF= 14.50

LOADING
10.17

14.48 (TYP)

RAMP 15:1



ALBERTSON'S - WICHITA, KS

GRADING AND DRAINAGE PLAN CCD NO. S-04

DESIGNED BY:
RHR

JOB NUMBER
27000038.708

APPROVED BY:
HWF

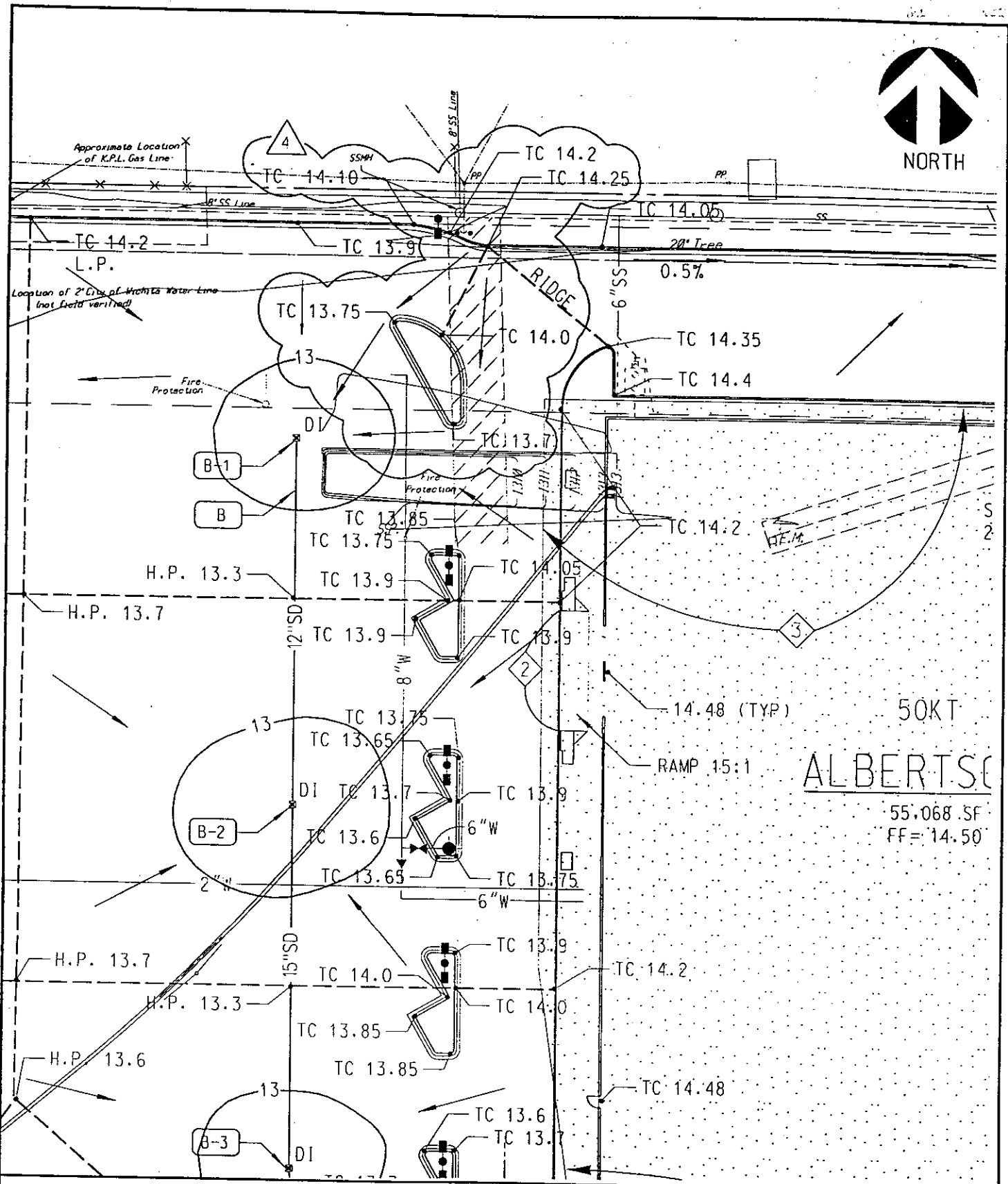
STORE NUMBER
2250

DATE:
07/03/97

SCALE
1" = 40'

SHEET
NUMBER

C311.4-4



ALBERTSON'S

55,068 SF
FF = 14.50'

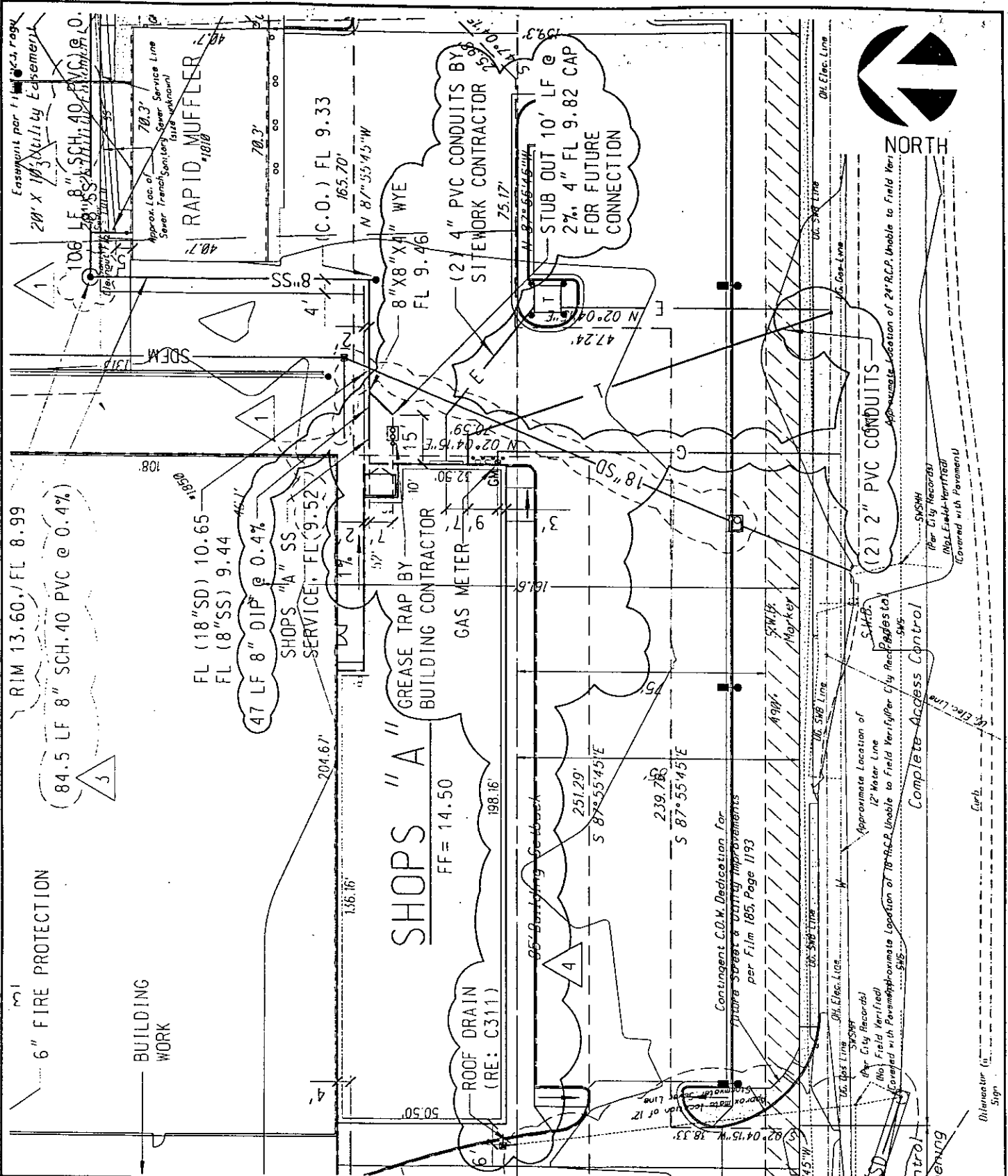
ALBERTSON'S - WICHITA, KS

GRADING AND DRAINAGE PLAN

CCD NO. S-04

DESIGNED BY: RHR	JOB NUMBER 27000038.708
APPROVED BY: HWF	STORE NUMBER 2250
DATE: 07/03/97	SCALE 1" = 40'

SHEET NUMBER **C311.4-5**



ALBERTSON'S - WICHITA, KS

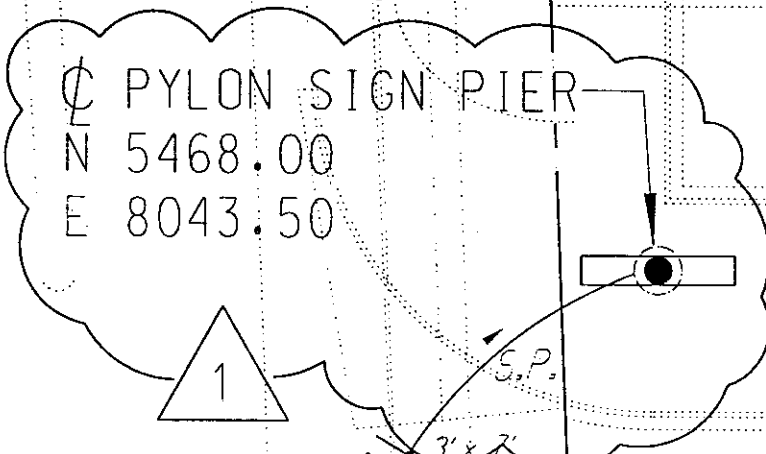
UTILITY PLAN
 CCD NO. S-04

DESIGNED BY: RHR	JOB NUMBER 27000038.707
APPROVED BY: HWF	STORE NUMBER 2250
DATE: 07/03/97	SCALE 1" = 40'
SHEET NUMBER	C401.4-2



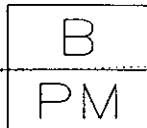
Enc. 1.4'
S. of Line

SWB Fiber
Optic Sign



UG. Gas Line
8" SS Line

1 1/4" C.
3#4:SL-1,3
1#4:GROUND



5

UG. Gas Line

signs

Light
N 5356

ALBERTSON'S - WICHITA, KS

SITE LIGHTING PLAN
CCD NO. S-04

DESIGNED BY:
JWL/JSH

JOB NUMBER
27000038.250

APPROVED BY:
JSH

STORE NUMBER
2250

DATE:
07/03/97

SCALE
1" = 20'

SHEET
NUMBER

ES101.4-1



1" C.
2#10:SL-34
1#10:GROUND

1" C.
3#10:SL-
1#10:GROUND

(TYP)
12" SD

2

1

⊙ PYLON PIER
N 5028.79
E 8373.33

⊙ PYLON PIER
N 5013.79
E 8373.33

JOINT TENANT
PYLON SIGN

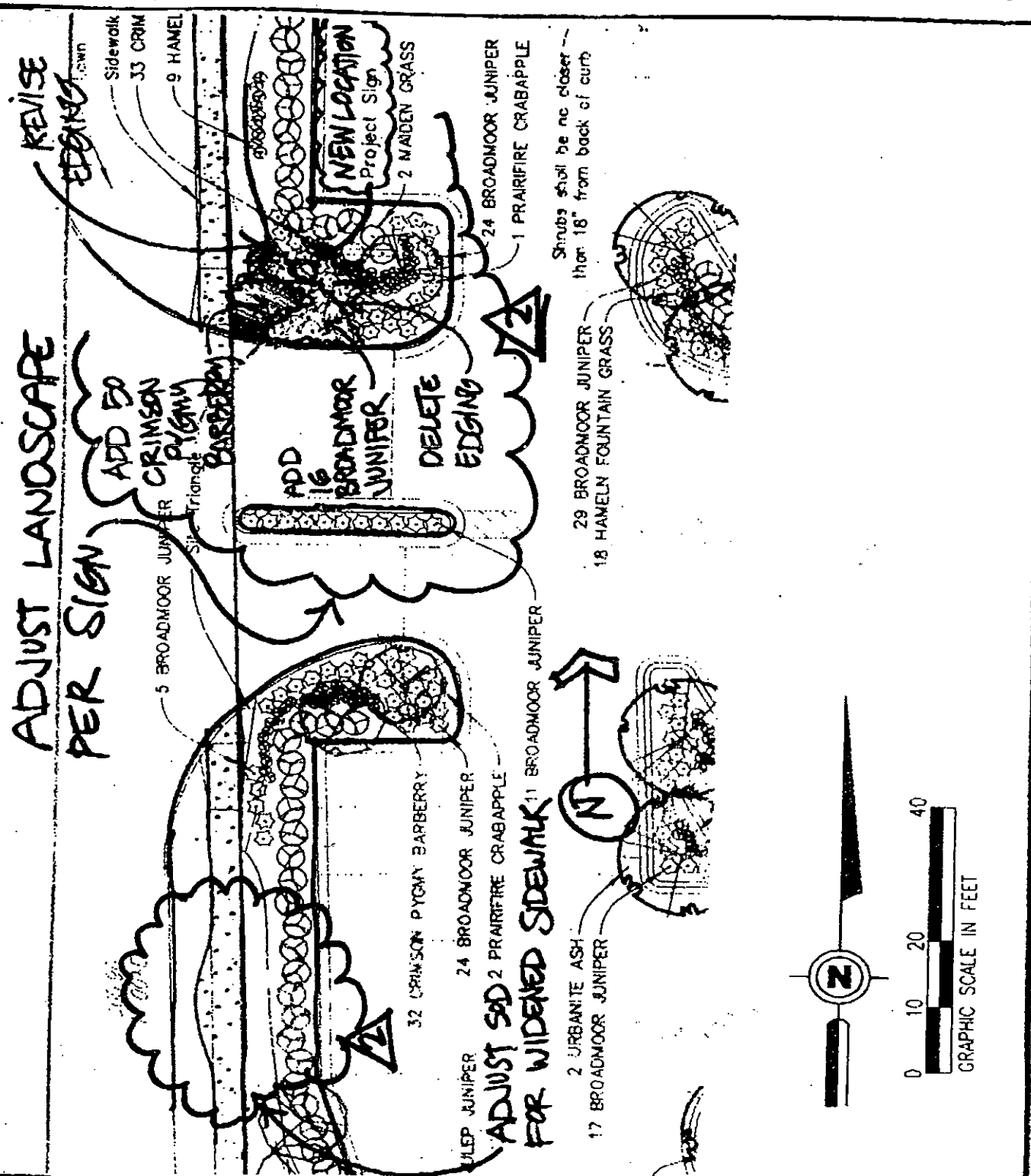
51' Access Control
Except one opening

1 ST STREET N.

ALBERTSON'S - WICHITA, KS	DESIGNED BY: JWL/JSH	JOB NUMBER 27000038.250
	APPROVED BY: JSH	STORE NUMBER 2250
SITE LIGHTING PLAN CCD NO. S-04	DATE: 07/03/97	SCALE 1" = 20'
	SHEET NUMBER	ES101.4-2

ADJUST LANDSCAPE PER SIGN

REVISE EDGING

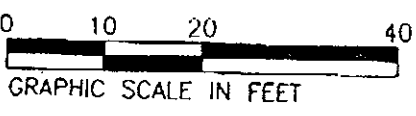
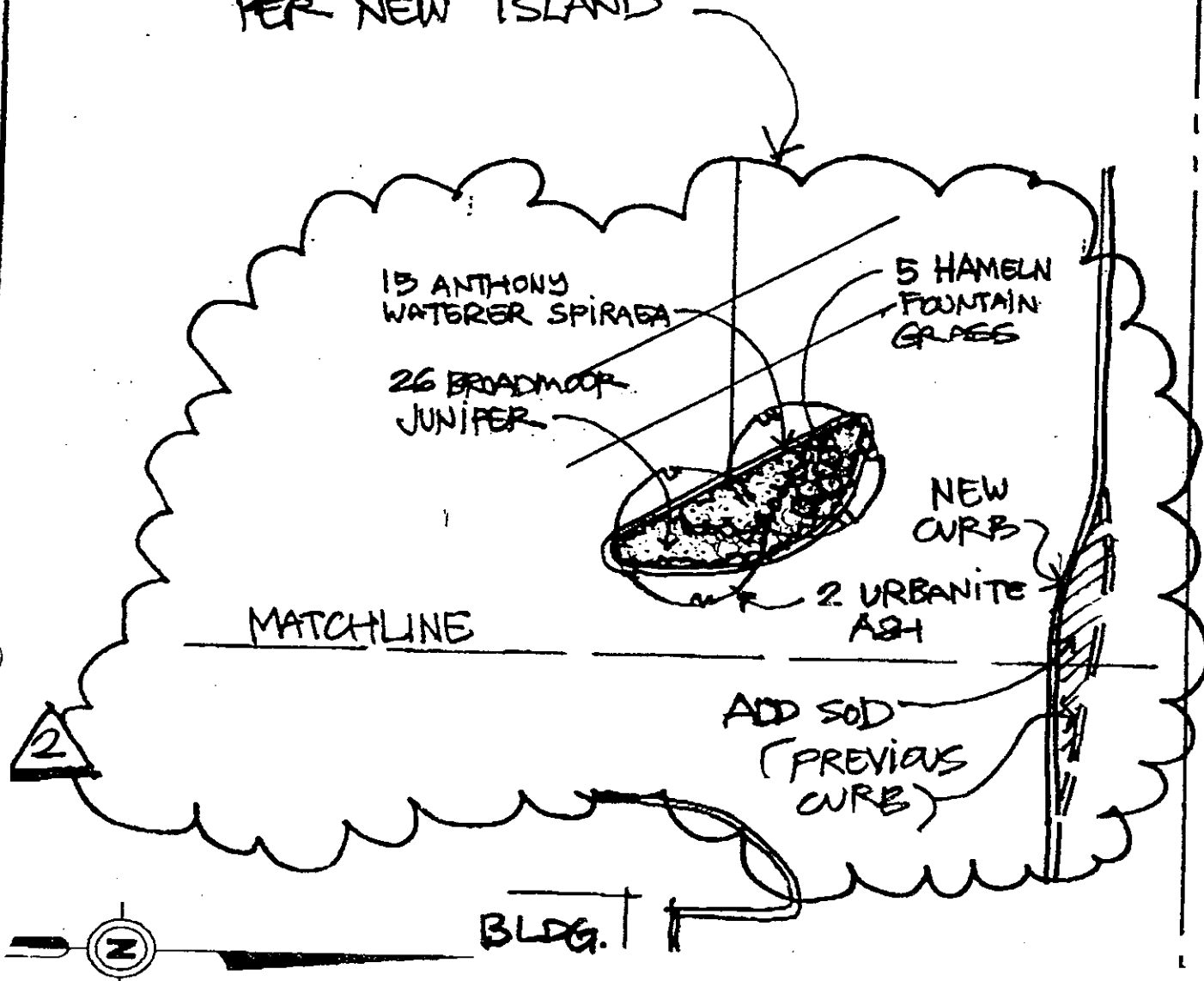


ALBERTSON'S - WICHITA, KS

LANDSCAPING PLAN-CCD NO. S-04

DESIGNED BY MNP	JOB NUMBER 27000038.250
APPROVED BY PTA	STORE NUMBER 2250
DATE 7/3/97	SCALE 1" = 20'
SHEET NUMBER LS102.4-1	

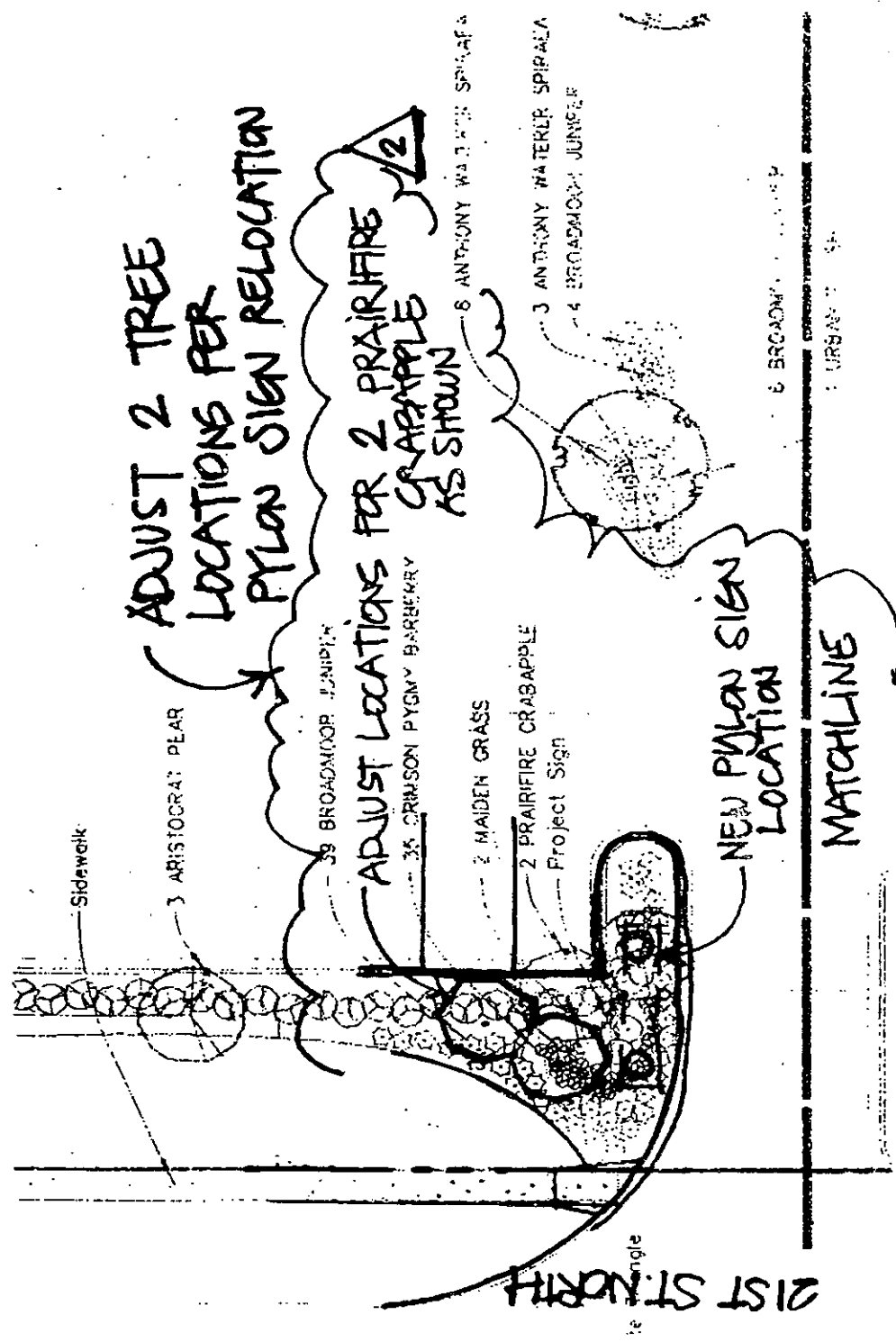
REVISE LANDSCAPING PER NEW ISLAND



ALBERTSON'S - WICHITA, KS

LANDSCAPING PLAN-CCD NO. S-04

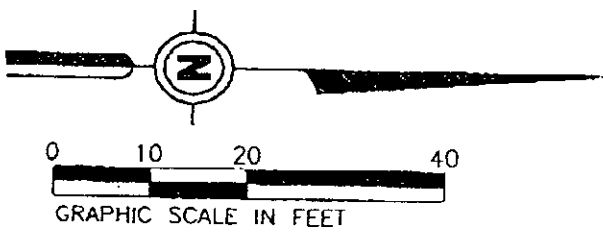
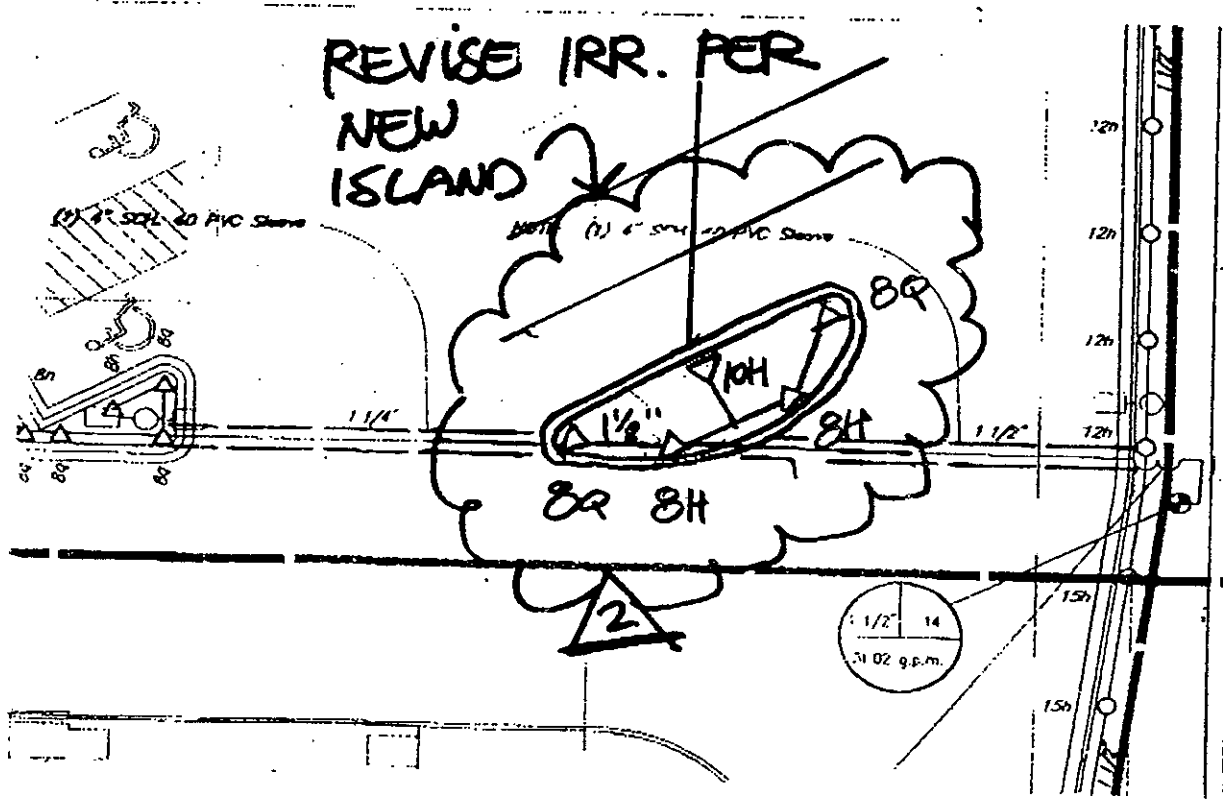
DESIGNED BY MNP	JOB NUMBER 27000038.250
APPROVED BY PTA	STORE NUMBER 2250
DATE 7/3/97	SCALE 1" = 20'
SHEET NUMBER LS102.4-2	



ALBERTSON'S - WICHITA, KS

LANDSCAPING PLAN-CCD NO. S-04

DESIGNED BY MNP	JOB NUMBER 27000038.250
APPROVED BY DTA	STORE NUMBER 2250
DATE 7/3/97	SCALE 1" = 20'
SHEET NUMBER LS102.4-3	



ALBERTSON'S - WICHITA, KS	DESIGNED BY MNP	JOB NUMBER 27000038.250
	APPROVED BY DTA	STORE NUMBER 2250
IRRIGATION PLAN - CCD NO. S-04	DATE 7/3/97	SCALE 1" = 20'
	SHEET NUMBER IR102.4-1	