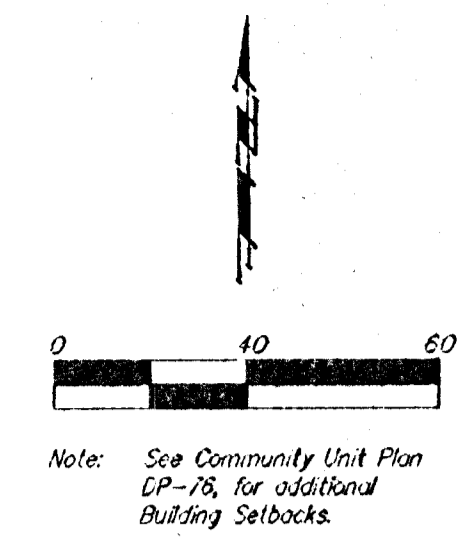


# DRAINAGE PLAN

## AMIDON PLAZA ADDITION

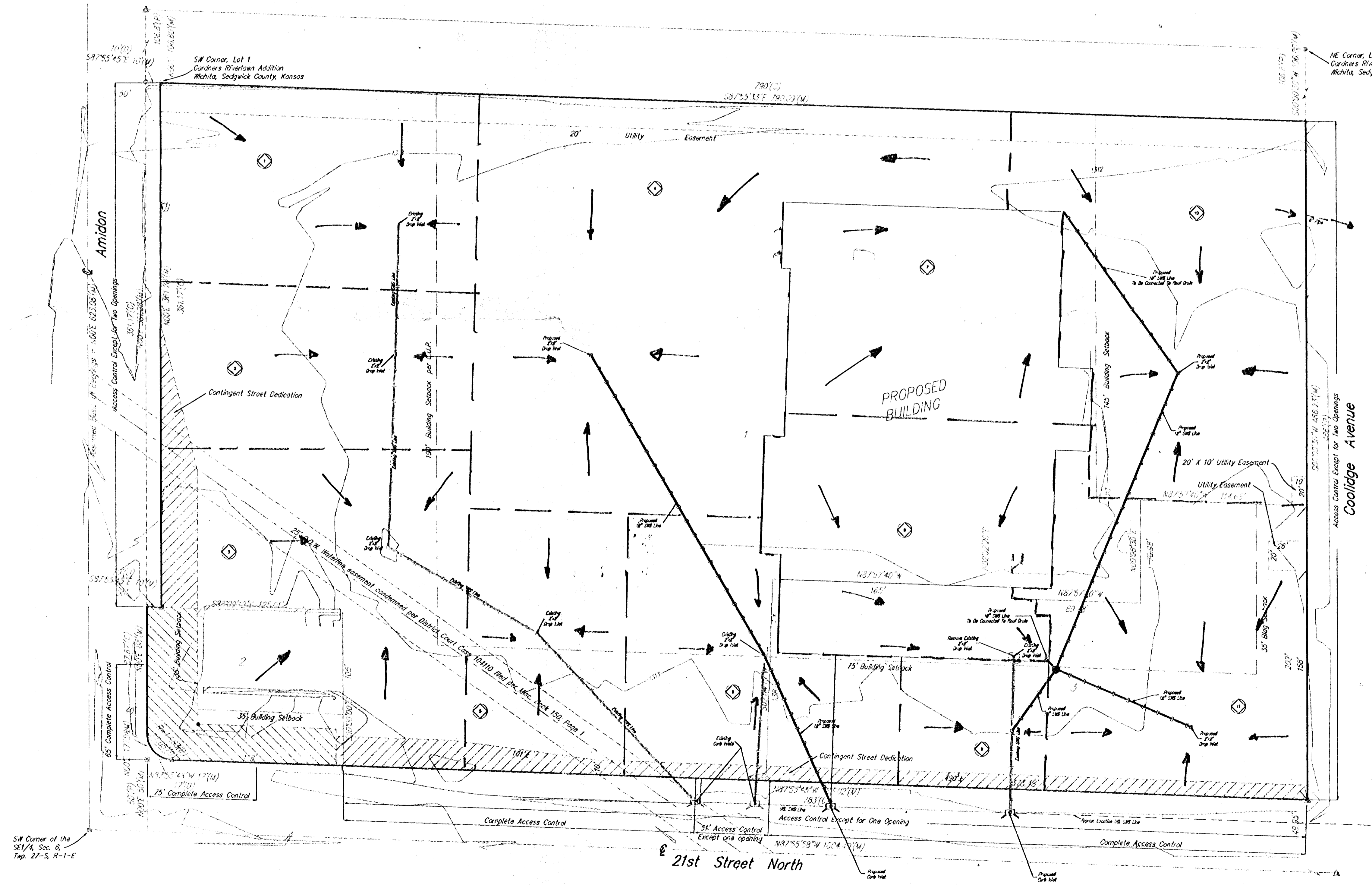
### WICHITA, SEDGWICK COUNTY, KANSAS

Drainage Area	Area (acres)	C <sub>2</sub>	C <sub>100</sub>	I <sub>2</sub> (in/hr)	I <sub>100</sub> (in/hr)	Q <sub>2</sub> (cfs)	Q <sub>100</sub> (cfs)
1	.8	.9	.9	4.56	7.37	3.3	5.3
2	.6	.9	.9	4.56	7.37	2.5	4.0
3	1.1	.9	.9	4.56	7.37	4.5	7.3
4	1.6	.9	.9	4.56	7.37	6.6	10.6
5	.4	.9	.9	4.56	7.37	2.7	1.6
6	.5	.9	.9	4.56	7.37	2.1	3.5
7	.6	.9	.9	4.56	7.37	2.5	4.0
8	.8	.9	.9	4.56	7.37	3.3	5.3
9	.2	.9	.9	4.56	7.37	.8	1.3
10	1.0	.9	.9	4.56	7.37	4.1	6.6
11	.9	.9	.9	4.56	7.37	3.7	6.0



- (P) = Plotted
- (M) = Measured
- (D) = Described
- = 3/4" Iron Pipe Found
- = #4 Boiler Rubber Found
- ⊗ = P.K. Nail Set
- △ = #4 Baughman Rubber Set
- ▲ = 1/2" Iron Pipe Found
- = Trimble Found

**BENCHMARK:**  
 City of Wichita Disc on SE. corner of the  
 Little Arkansas River bridge located on  
 21st Street N.  
 Elev. = 1313.71



Inlet and Pipe Sizes Per  
 Drainage Plan by BSIV Architects  
 Supplied on 8/30/96

**BAUGHMAN COMPANY, P. A.**  
 ENGINEERING & SURVEYING  
 318/222-7211 • 318 BLISS • WICHITA, KANSAS 67211