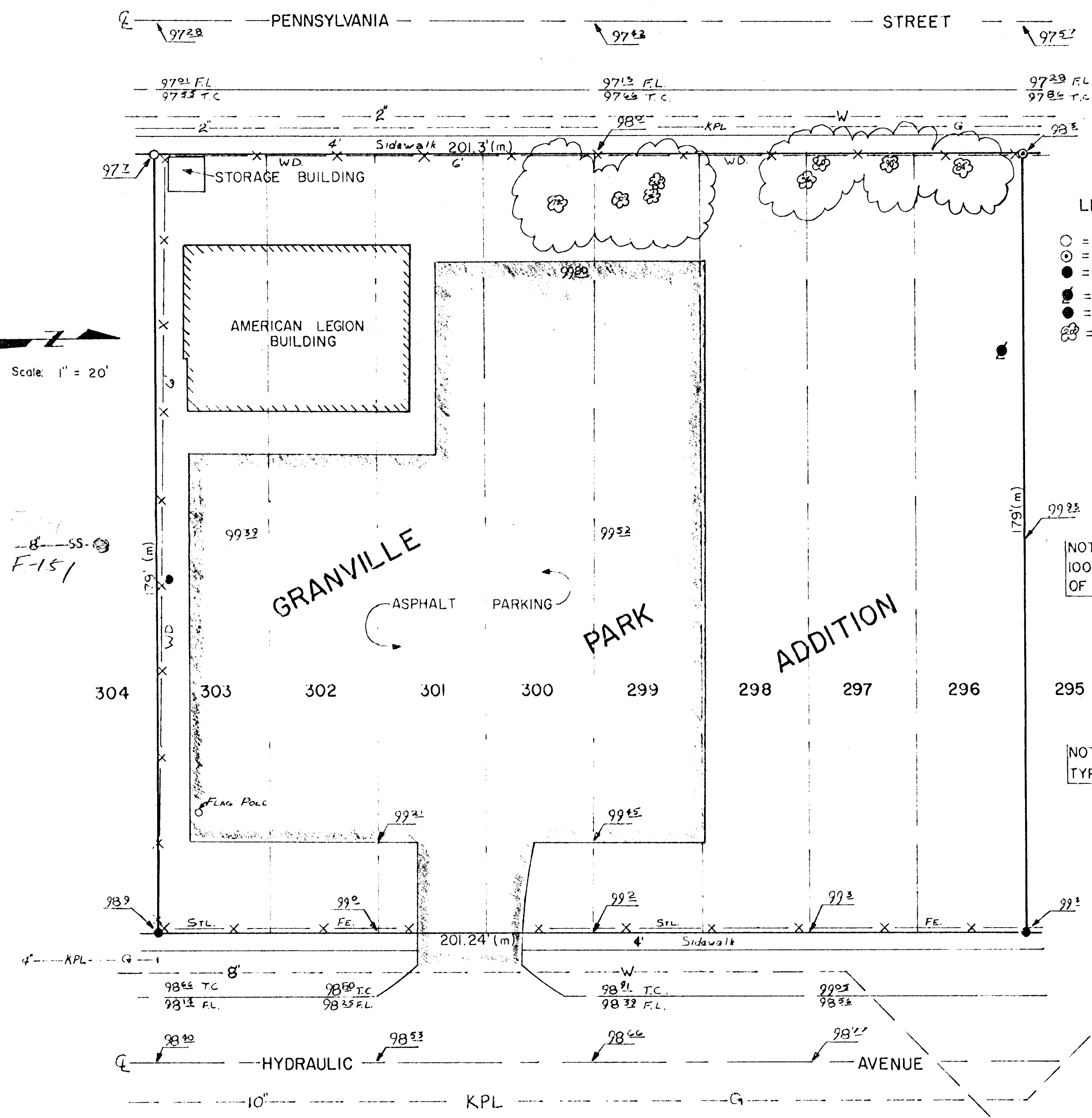


G-179
POST # 273
AMERICAN LEGION ADDITION
 WICHITA, SEDGWICK COUNTY, KANSAS



- LEGEND**
- = Found 3/4" Iron Pipe
 - ⊙ = Found 1/2" Iron Pipe
 - = Found 1/2" Rebar
 - ⦿ = Light Pole
 - ⦿ = Power Pole
 - ⊗ = Tree & Size

NOTE:
 100.00 = ELEVATION OF FOUNDATION
 OF AMERICAN LEGION BUILDING

NOTE:
 TYPICAL LOT SIZE = 25' X 179'

AMERICAN LEGION WICHITA, KANSAS			
SKETCH AMERICAN LEGION ADDITION 1325 N. HYDRAULIC			
CASTLE & ASSOCIATES ENGINEERS WICHITA, KANSAS	DSG TDS	DWG FILE NO 8737-C-10,243	
	CH	APP	SHEET NO 1 OF 1
DATE	JUNE 1987		