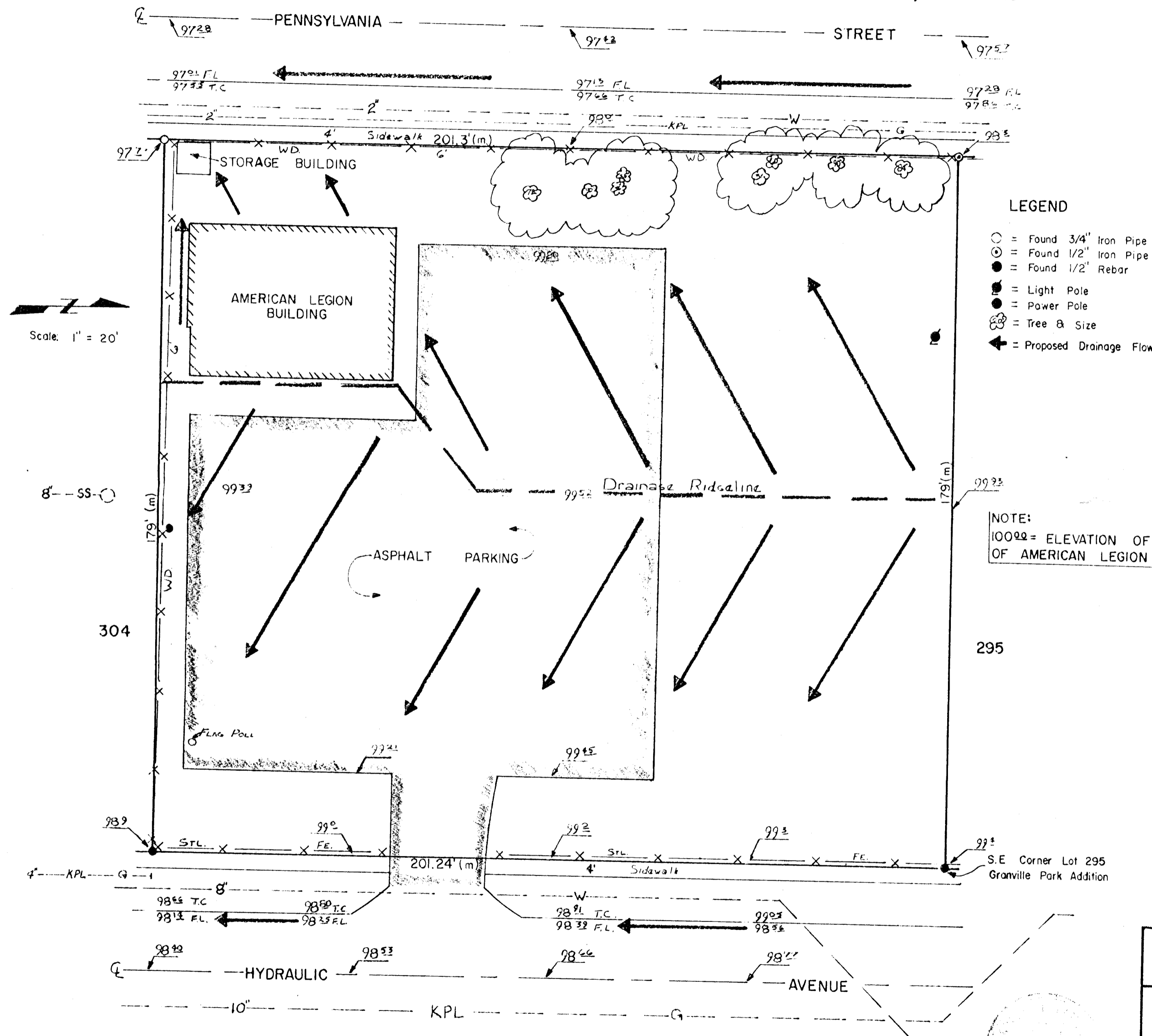


POST # 273 AMERICAN LEGION ADDITION

WICHITA, SEDGWICK COUNTY, KANSAS



- LEGEND**
- = Found 3/4" Iron Pipe
 - = Found 1/2" Iron Pipe
 - = Found 1/2" Rebar
 - = Light Pole
 - = Power Pole
 - ⊗ = Tree & Size
 - ← = Proposed Drainage Flow

NOTE:
100.00 = ELEVATION OF FOUNDATION OF AMERICAN LEGION BUILDING

AMERICAN LEGION WICHITA, KANSAS		
DRAINAGE PLAN AMERICAN LEGION ADDITION 1325 N. HYDRAULIC		
CASTLE & ASSOCIATES ENGINEERS WICHITA, KANSAS	DSG TDS DR TDS CH APP	DWG FILE NO 8737-C-50,038
DATE JUNE 1987	SHEET NO 1 OF 1	REV.