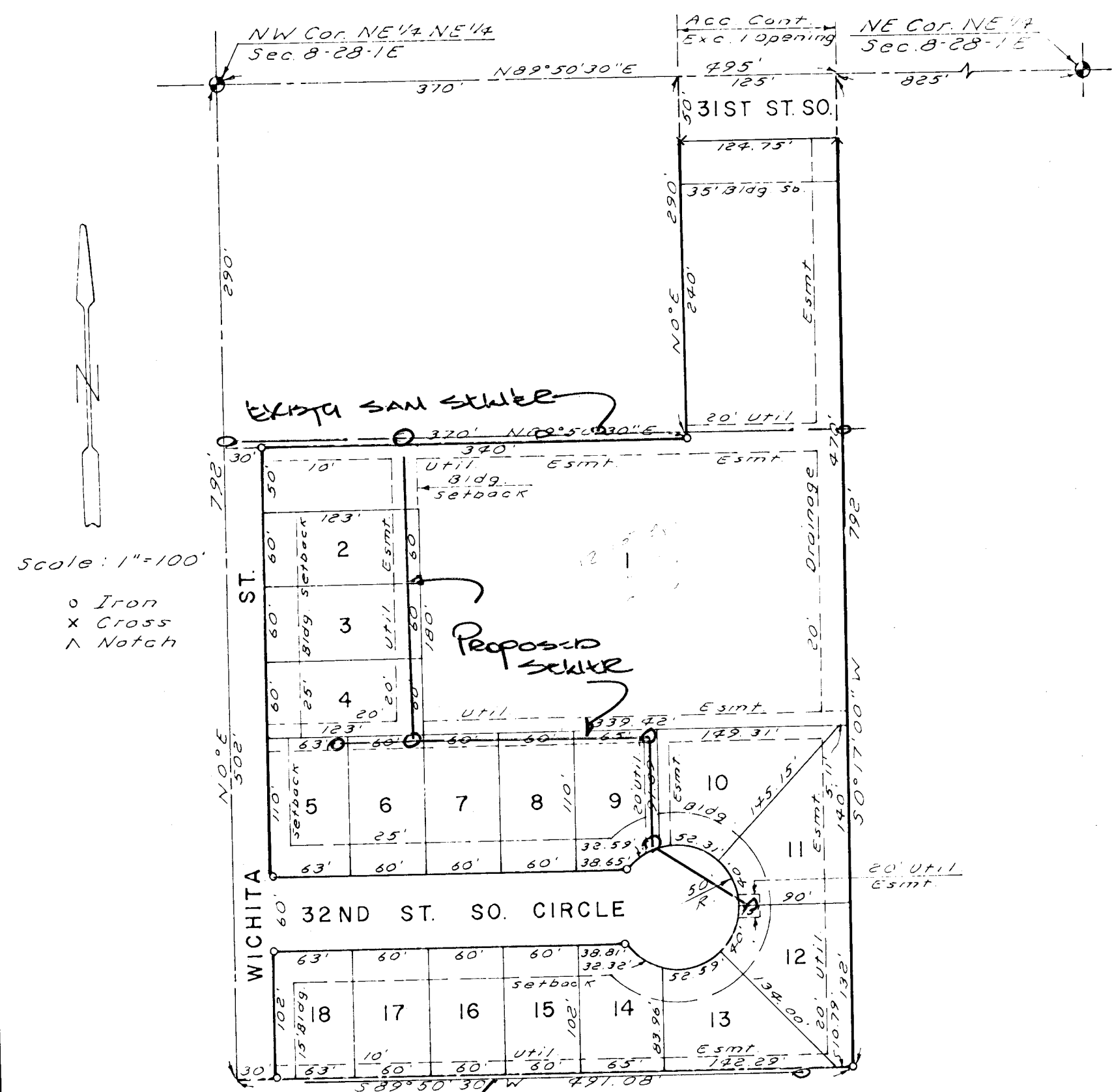


AMERICAN LEGION ADDITION

WICHITA, KANSAS



Return to 11/22

State of Kansas } S.S. We, Baughman Company, P.A.,
 Sedgwick County } Surveyors in aforesaid county and state, do hereby
 certify that we have surveyed and platted
 "AMERICAN LEGION ADDITION", Wichita, Kansas,
 and that the accompanying plat is a true and
 correct exhibit of the property surveyed de-
 scribed as beginning at a point on the north
 line of the NE 1/4 of Section 8, T28S, R1E of
 the 6th P.M., Sedgwick County, Kansas, said
 point being 825 feet west of the NE corner
 thereof; thence southerly, parallel with the
 east line of said NE 1/4, 192 feet; thence
 westerly, parallel with the north line of said
 NE 1/4, 491.08 feet to the west line of the NE 1/4
 of the NE 1/4 of said Section 8; thence northerly,
 along said west line, 722 feet to the NW corner
 thereof; thence easterly, along the north line
 of said NE 1/4, 495 feet to the point of beginning,
 except the north 290 feet of the west 370
 feet thereof.

Date _____ Baughman Company, P.A.
 _____ Surveyor
 John E. Lundblade

Know all men by these presents, that
 we, the undersigned, have caused the land de-
 scribed in the surveyors certificate to be plat-
 ted into lots and streets to be known as
 "AMERICAN LEGION ADDITION", Wichita, Kansas.
 The easements are hereby granted as indicated
 for the construction and maintenance of public
 utilities. The streets are hereby dedicated to
 and for the use of the public. All abutters
 rights of access to 31st St. South are hereby
 granted to the City of Wichita, Kansas, except,
 however, that Lot 1 shall have access at one
 location, said location to be determined by
 the City Engineer.

Air Capitol Post 401

This plat of "AMERICAN LEGION ADDITION",
 Wichita, Kansas, has been submitted to and
 approved by the Wichita-Sedgwick County
 Metropolitan Area Planning Commission,
 Wichita, Kansas. Dated this _____ day of
 _____, 1982.

Wichita-Sedgwick County Metropolitan
 Area Planning Commission

_____ Chairman
 James L. Gardner, II
 _____ Secretary
 Robert A. Larkin

This plat approved and all dedications
 shown hereon accepted by the Board of City
 Commissioners, Wichita, Kansas, this
 day of _____, 1982.

_____ Mayor
 R.C. Brown
 _____ City Clerk
 Donald C. Gistick

This plat approved and all dedications
 shown hereon accepted by the Board of County
 Commissioners, Sedgwick County, Kansas,
 this _____ day of _____, 1982.

_____ Chairman
 Jack Spratt
 _____ Commissioner
 Tim Scott
 _____ Commissioner
 Donald E. Bragg
 _____ County Clerk
 Dorothy K. White

Entered on transfer record this
 day of _____, 1982.

_____ County Clerk
 Dorothy K. White

State of Kansas } S.S. This is to certify that
 Sedgwick County } this plat has been filed for record in the
 Office of the Register of Deeds this _____
 day of _____, 1982, at _____ o'clock, _____ M.
 and is duly recorded.

_____ Register of Deeds
 Betty A. McCarr
 _____ Deputy
 Pat Kerker

State of Kansas } S.S. The foregoing instrument
 Sedgwick County } was acknowledged before me this _____ day
 of _____, 1982, by Air Capitol Post 401,
 by _____
 _____ Notary Public
 My Commission Expires _____