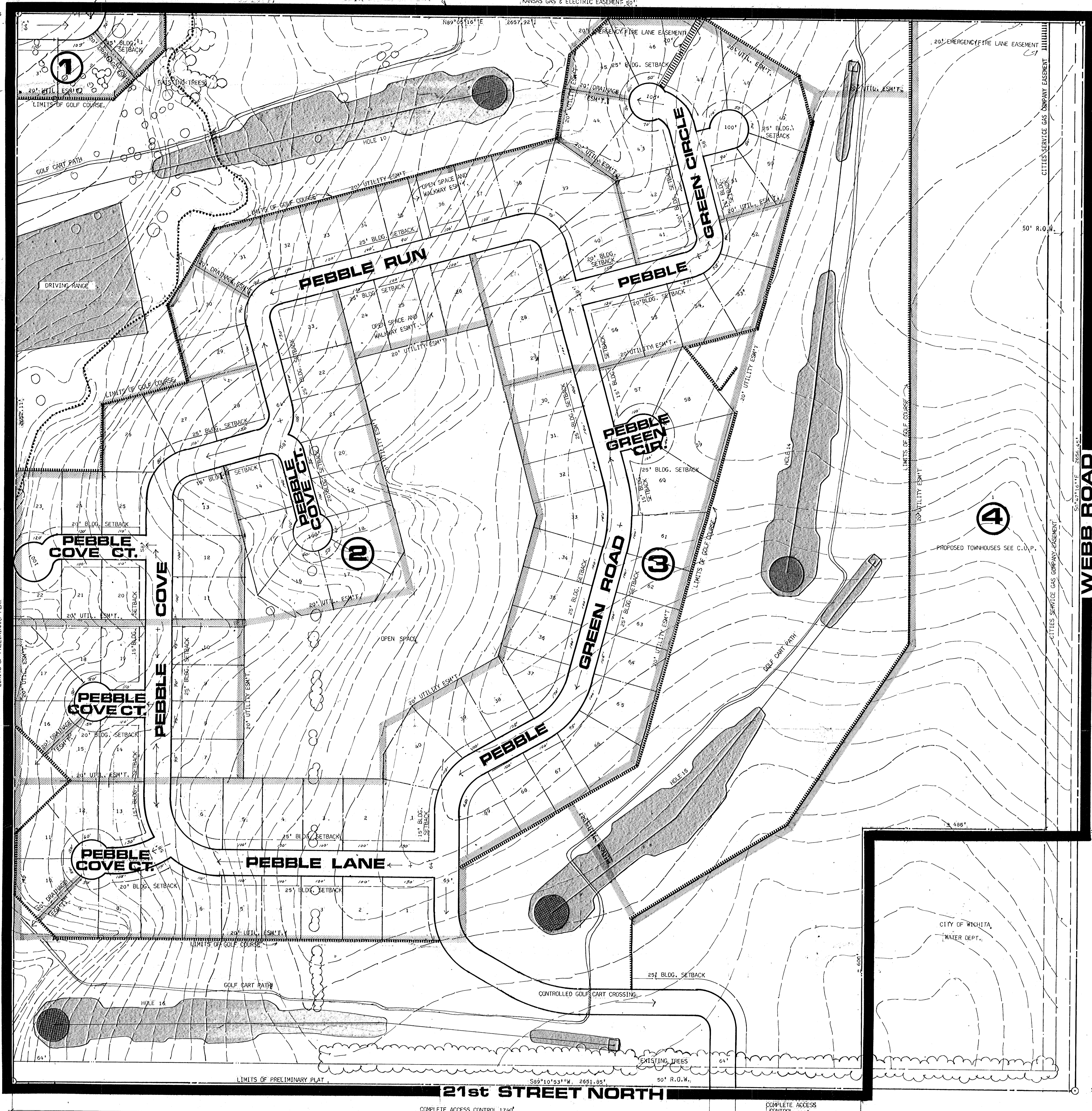


N.W. COR. S.E. 1/4 SEC. 9
T 27 S. R 2 E

STONEHENGE RD.
LIMITS OF PRELIMINARY PLAT
STORAGE
NE 1/4 SECTION 9
WICHITA DEVELOPMENT COMPANY
KANSAS GAS & ELECTRIC EASEMENT 60'

N.E. COR. S.E. 1/4 SEC. 9
T 27 S. R 2 E



GLENROCK GREENS,
SW 1/4 SECTION 9,
WICHITA DEVELOPMENT COMPANY

LIMITS OF PRELIMINARY PLAT
NO. 955 107' W

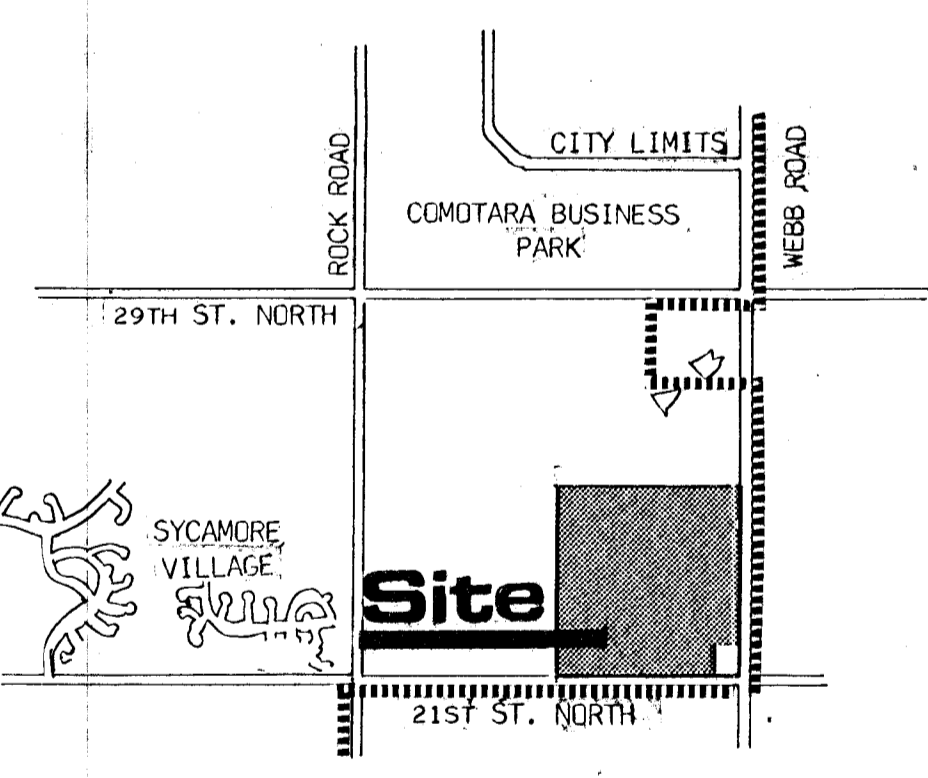
LIMITS OF PRELIMINARY PLAT
COMPLETE ADDRESS CONTROL 2500'

WICHITA PERKINS
CO. (COUNTY)

STELBAR CIL
(COUNTY)

WICHITA DEVELOPMENT CORPORATION

S.E. COR. S.E. 1/4 SEC. 9
T 27 S. R 2 E



LOCATION MAP



PRELIMINARY PLAT

PEBBLE GREENS

OWNER: WICHITA DEVELOPMENT COMPANY DEVELOPER: COMOTARA PROPERTIES, INC. 2225 HATHAWAY CIRCLE, WICHITA, KANSAS 67226

CONSULTING CIVIL ENGINEERS: VAN DOREN-HAZARD-STALLINGS TOPO: VAN DOREN-HAZARD-STALLINGS 1974

1 JUNE 1979

SCALE: 1" = 100' 200' 300' 400' 500' 600'

CONTOUR INTERVAL 1'



BILL G. YUNG DESIGN
1365 NORTH WACO WICHITA, KANSAS 67203 316-264-0876