

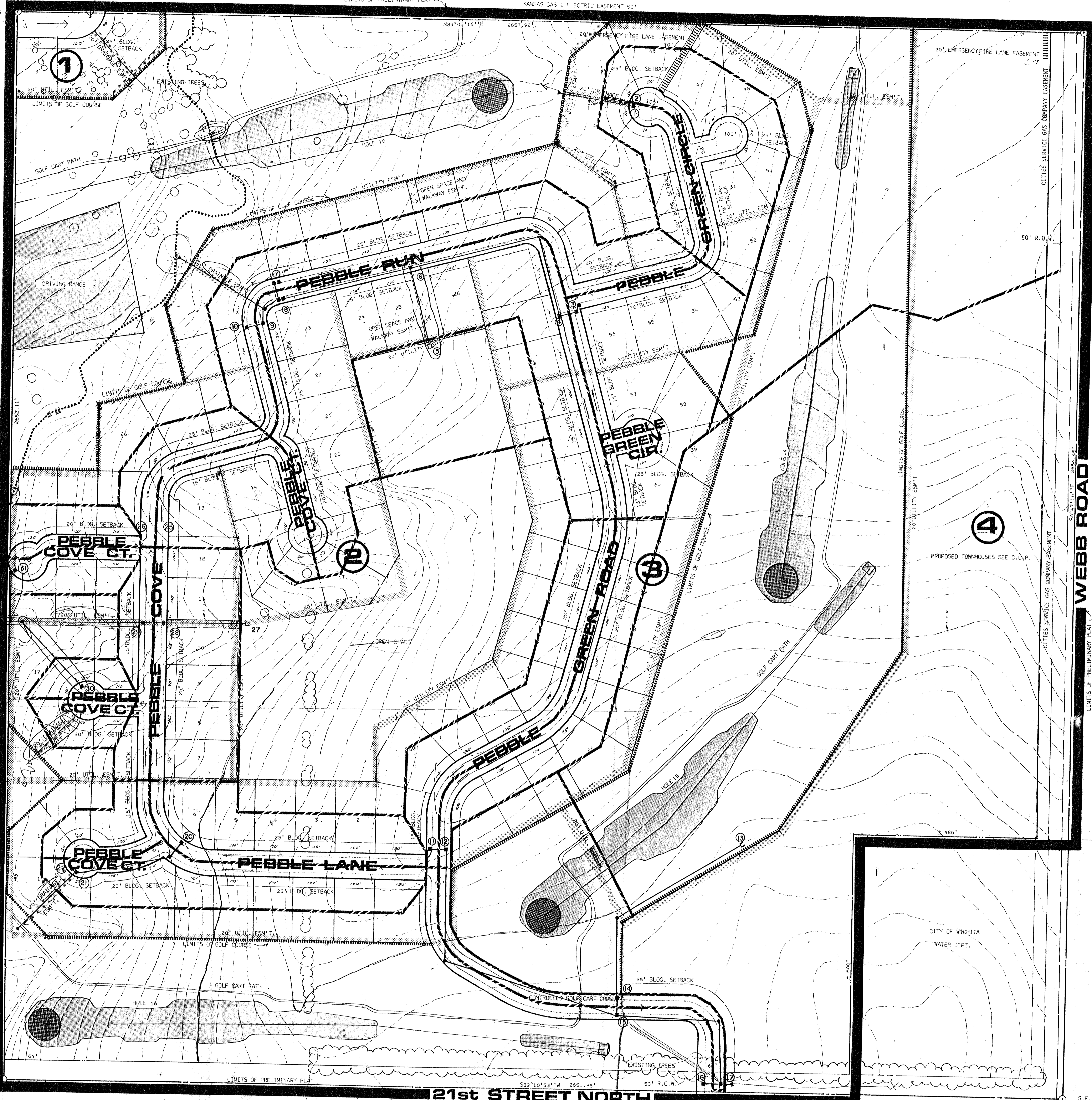
N.W. COR. S.E. 1/4 SEC. 5
T 27 S. R 2 E

STONEHENGE RD.

STONEHENGE
NE 1/4 SECTION 5
WICHITA DEVELOPMENT COMPANY

KANSAS GAS & ELECTRIC EASEMENT 20'

N.E. COR. S.E. 1/4 SEC. 5
T 27 S. R 2 E



GLENNCOCK GREENS
SW 1/4 SECTION 9
WICHITA DEVELOPMENT COMPANY

10°55'10" W
LIMITS OF PRELIMINARY PLAT

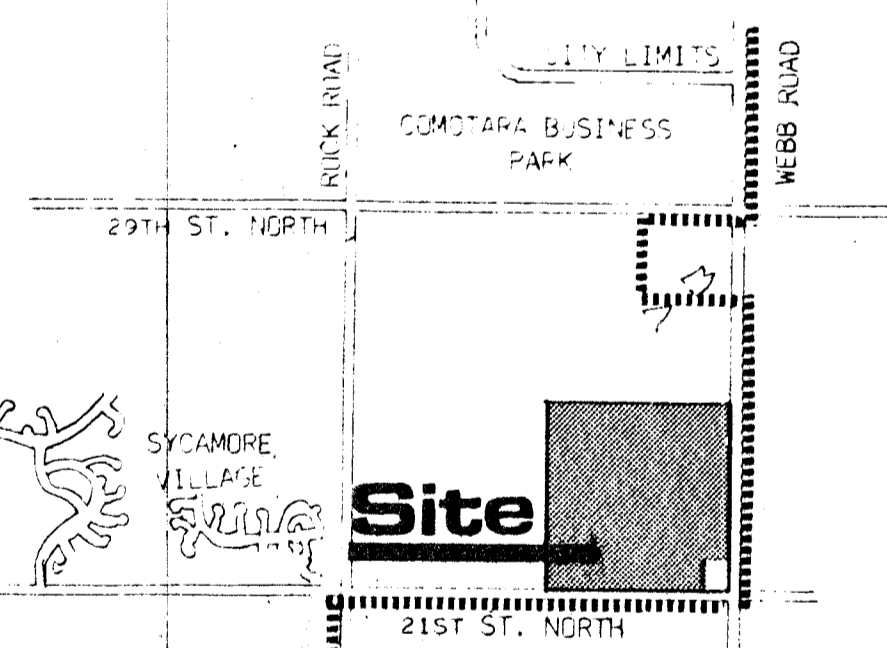
10°55'10" W
LIMITS OF PRELIMINARY PLAT

HAWMAN FERRIS
PL (COUNTY)

STILLBAY OIL
PL (COUNTY)

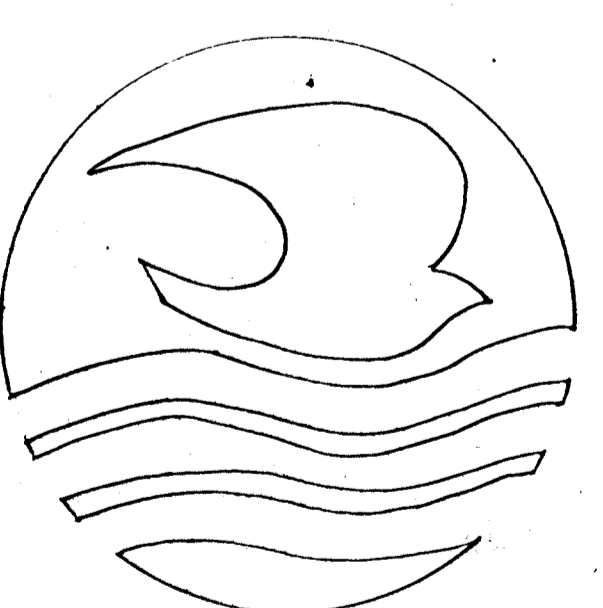
QUANISDA DEVELOPMENT CORPORATION

S.E. COR. S.E. 1/4 SEC. 5
T 27 S. R 2 E



LOCATION MAP

S.W. COR. S.E. 1/4 SEC. 5
T 27 S. R 2 E



PRELIMINARY PLAT

PEBBLE GREENS

OWNER: WICHITA DEVELOPMENT COMPANY DEVELOPER: COMTARA PROPERTIES, INC., 2229 HATHWAY CIRCLE, WICHITA, KANSAS 67226

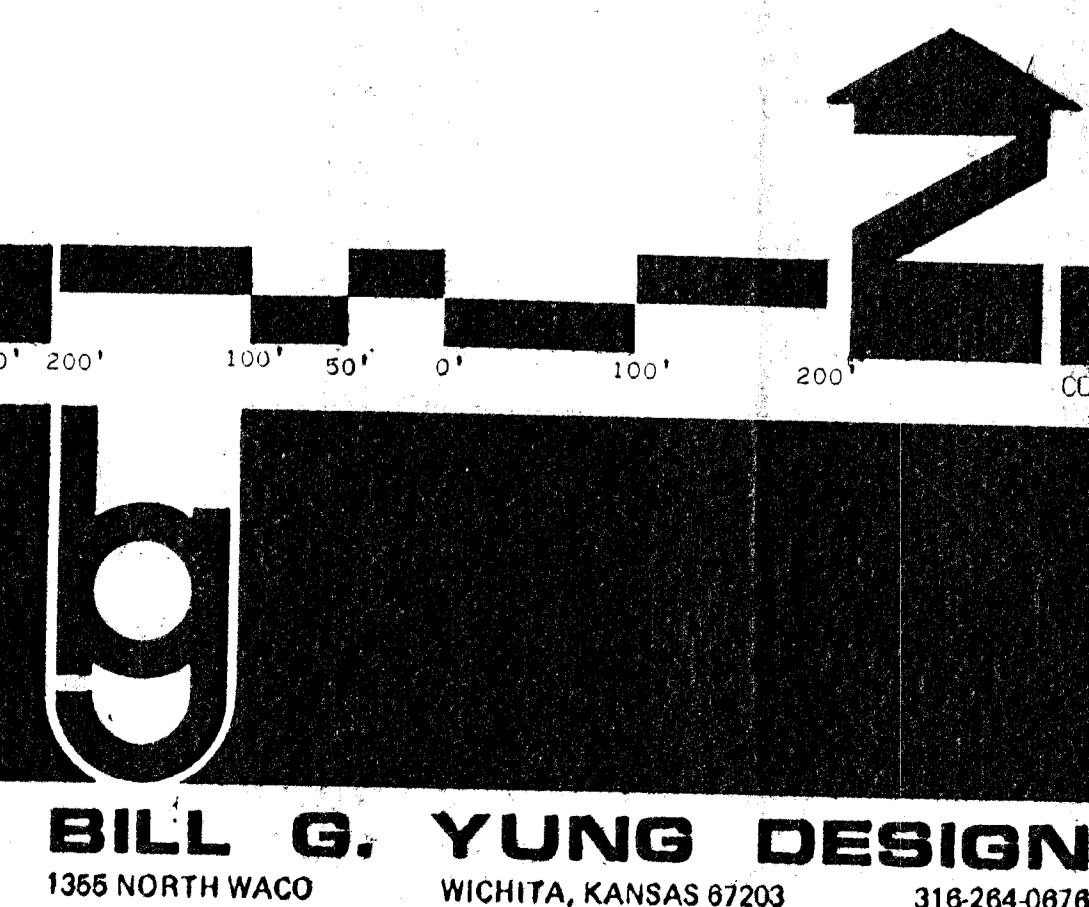
CONSULTING CIVIL ENGINEERS: VAN DOREN-HAZARD-STALLINGS, TOP: VAN DOREN-HAZARD-STALLINGS, 1974

1 JUNE 1979

SCALE 1" = 100' 200' 300' 400' 500' 600'

CONTOUR INTERVAL 1'

Van Doren - Hazard - Stallings
 Architects - Engineers - Planners
 Topeka Wichita Minneapolis



BILL G. YUNG DESIGN
 1365 NORTH WACO WICHITA, KANSAS 67203 316-264-0878