

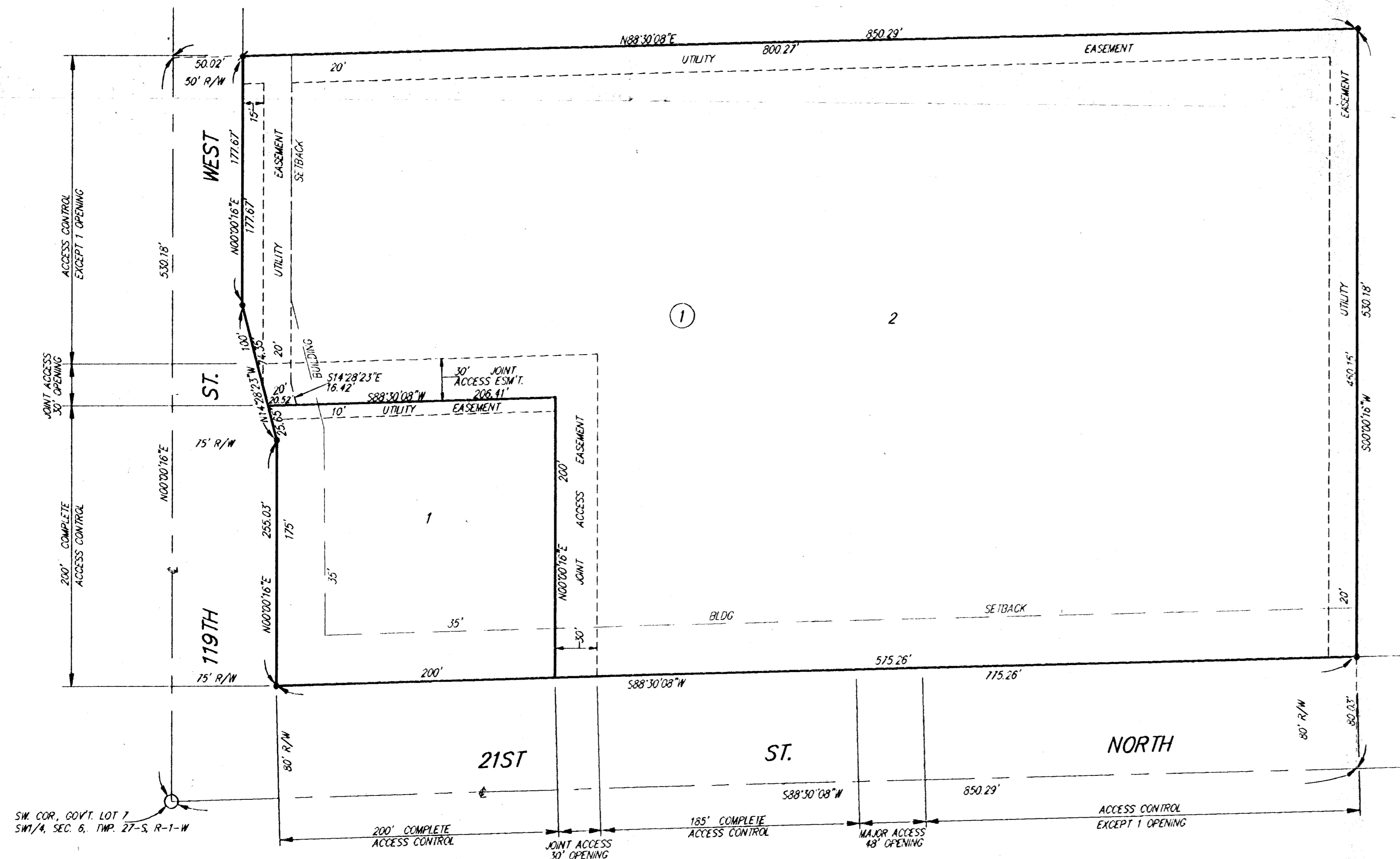
# ABERDEEN COMMERCIAL ADDITION

## WICHITA, SEDGWICK COUNTY, KANSAS



- = REBAR W/ "BAUGHMAN" CAP (SET)
- \* = REBAR W/ "POE & ASSOC." CAP (FOUND)
- = THIMBLE (FOUND)

Additional building setback line requirements are as established in Community Unit Plan 69-218 on 12a with the Wichita-Sedgwick County Metropolitan Area Planning Department.



State of Kansas) SS We, Baughman Company, P.A., Surveyors in Sedgwick County do hereby certify that we have surveyed and platted "ABERDEEN COMMERCIAL ADDITION", Wichita, Sedgwick County, Kansas and that the accompanying plat is a true and correct exhibit of the property surveyed, described as the south 530 feet of the west 850 feet of Government Lot 7 in the SW1/4 of Sec. 6, Twp. 27-S, R-1-W of the 6th P.M., Sedgwick County, Kansas.

Existing easements and dedications being vacated by virtue of K.S.A. 12-512(b).

Baughman Company, P.A.

Gregory F. Severns



This plat of "ABERDEEN COMMERCIAL ADDITION", an Addition to Wichita, Sedgwick County, Kansas has been submitted to and approved by the Wichita-Sedgwick County Metropolitan Area Planning Commission, Wichita, Kansas.  
 Dated this 15th day of June, 1995.  
 Wichita-Sedgwick County Metropolitan Area Planning Commission

John W. McKay, Jr. Chairman  
John W. McKay, Jr.

Marvin S. Krout Secretary  
Marvin S. Krout

This plat approved and all dedications shown hereon accepted by the City Council of the City of Wichita, Kansas, this 29th day of August, 1995.

Bob Knight Mayor  
Pat Burnett Deputy City Clerk  
 Pat Burnett

Know all men by these presents that we, the undersigned, have caused the land in the surveyors certificate to be platted into lots, a block, and streets to be known as "ABERDEEN COMMERCIAL ADDITION", Wichita, Sedgwick County, Kansas. The utility easements are hereby granted as indicated for construction and maintenance of all public utilities. The joint access easements are hereby granted as indicated for purposes of ingress and egress. The streets are hereby dedicated to and for the use of the public. Access controls as depicted on the face of the plat are hereby granted to the City of Wichita, Kansas. The permitted entrance locations shall be as determined by the City Engineer of the City of Wichita, Kansas.

Gregory Alan Neville and Alvin Leon Neville under Trust N/K/A Neville Family Trust dated December 24, 1991

Edward T. Neville, Trustee  
Edward T. Neville

Rita A. Neville, Trustee  
Rita A. Neville

Gregory Alan Neville, Trustee  
Gregory Alan Neville

Alvin Leon Neville, Trustee  
Alvin Leon Neville

Entered on transfer record this \_\_\_\_\_ day of \_\_\_\_\_, 1995.

\_\_\_\_\_  
Susan E. Crockett-Spoon  
County Clerk

State of Kansas) SS The foregoing instrument acknowledged before me, this 5th day of AUGUST, 1995, by Edward T. Neville, Rita A. Neville, Gregory Alan Neville, and Alvin Leon Neville, Trustees for Gregory Alan Neville and Alvin Leon Neville under Trust N/K/A Neville Family Trust dated December 24, 1991.

Philip J. Meyer Notary Public  
PHILIP J. MEYER

My App't. Exp. 5/3/97

State of Kansas) SS This is to certify that this plat has been filed for record in the office of the Register of Deeds, this \_\_\_\_\_ day of \_\_\_\_\_, 1995, at \_\_\_\_\_ o'clock \_\_\_\_\_ M., and is duly recorded.

\_\_\_\_\_  
Pat Kattler  
Register of Deeds

\_\_\_\_\_  
Ed Resa  
Deputy