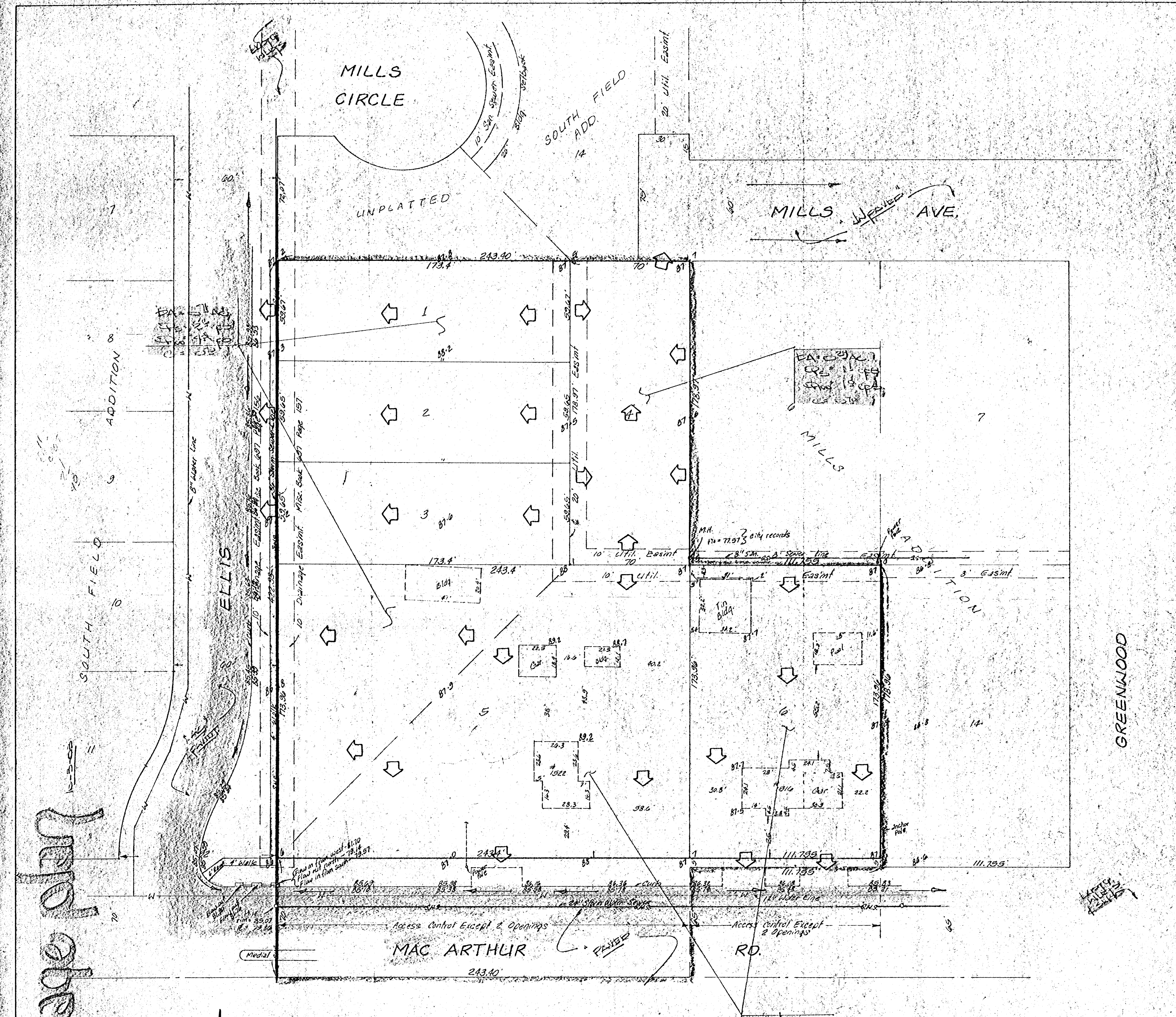


John Blue Addition



**SKETCH PLAT  
JOHN BLUE ADDITION**  
 REPLAT OF LOT 15, MILLS ADDITION  
 TO SEDGWICK COUNTY, KANSAS AND  
 TOGETHER WITH A TRACT IN THE SE 1/4  
 OF SEC. 9, TWP 28-S, R-1-E

OWNERS:  
 JOHN BLUE (CONTRACT PURCHASER)  
 MILES ANDREW GROVES

**BAUGHMAN COMPANY, P.A.**  
 SURVEYING & ENGINEERING  
 314/262-7271 • 330 LAURA • WICHITA, KANSAS 67211

SEPT. 30, 1983