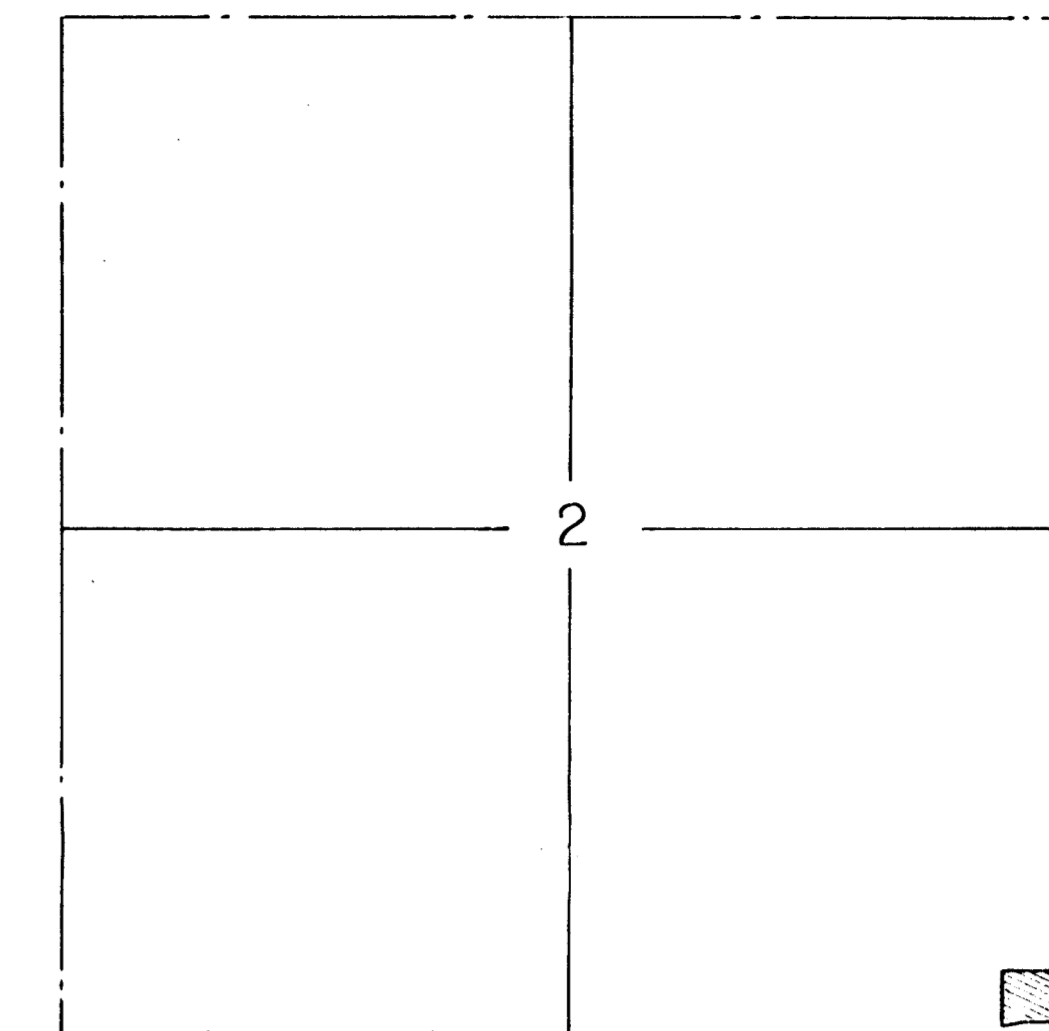
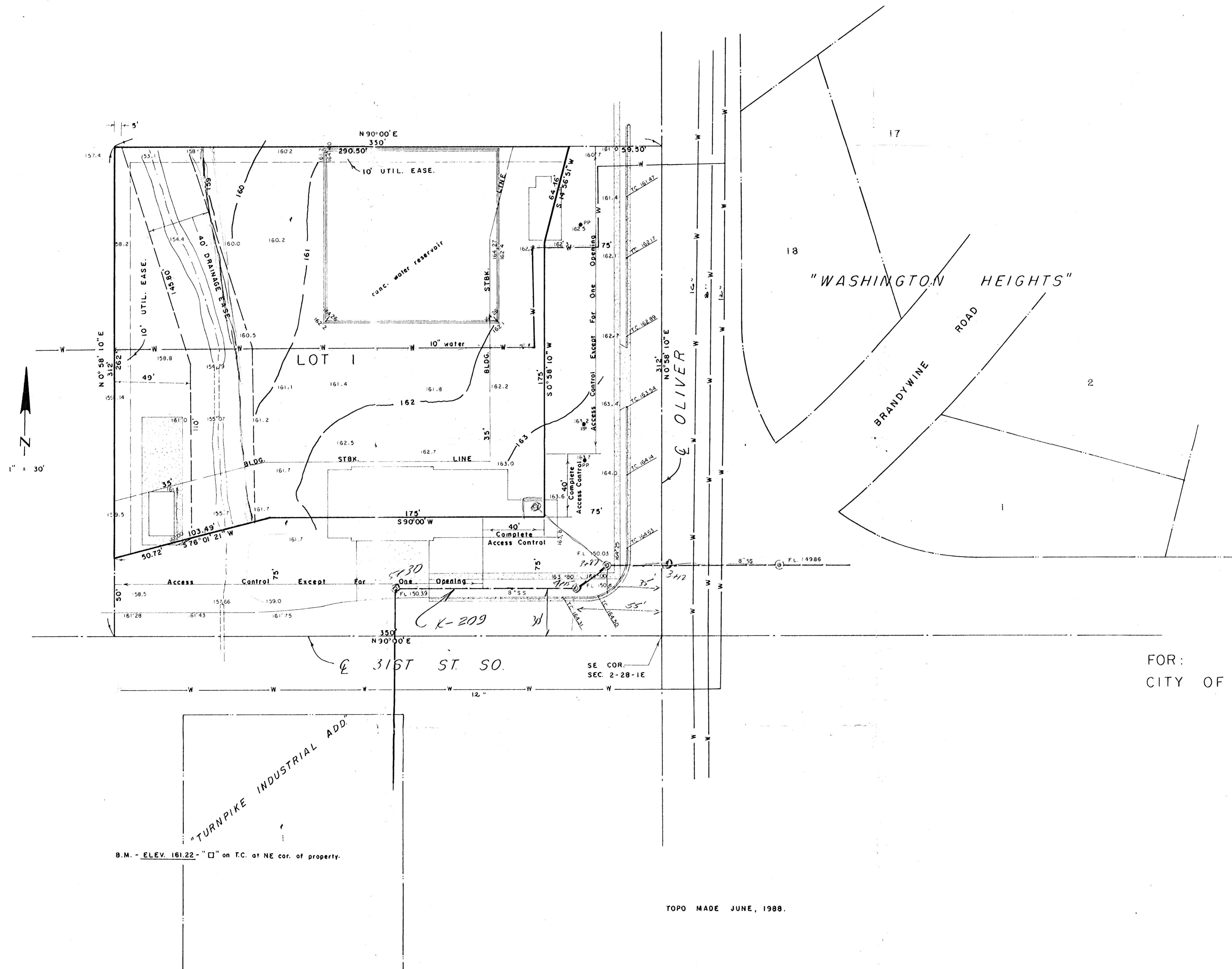


SKETCH PLAT
 ROBERT E. BLEVINS ADDITION,
 WICHITA, SEDGWICK COUNTY, KANSAS



VICINITY MAP
 1" = 1000'



FOR:
 CITY OF WICHITA

B.M. - ELEV. 161.22 - "□" on T.C. at NE cor. of property.

TOPO MADE JUNE, 1988.

LOWELL D. HIGH, L.S.
 1542 S. ST. FRANCIS
 WICHITA, KS 67211