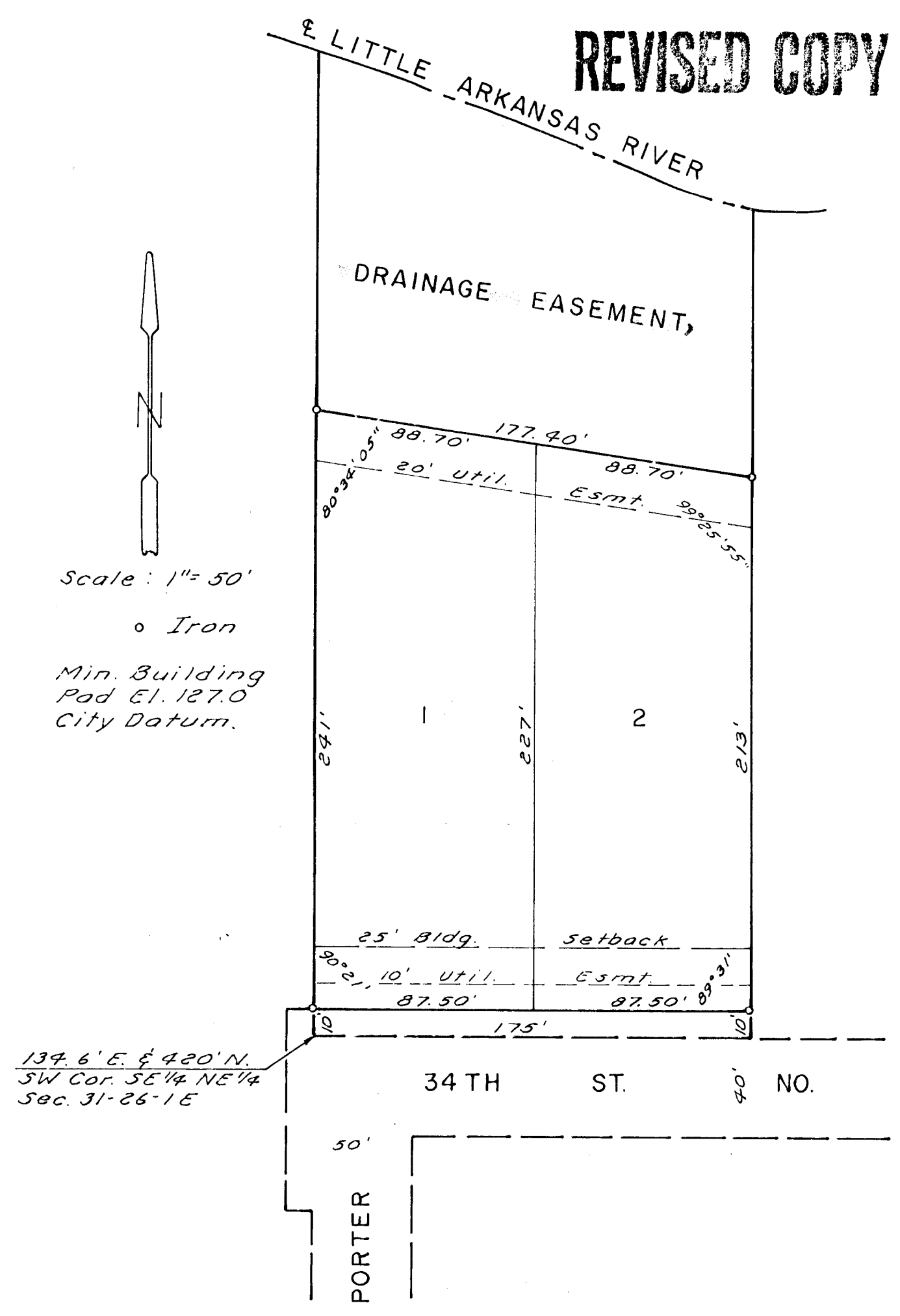


# BLAHA ADDITION

WICHITA, KANSAS

REVISED COPY



State of Kansas } S.S. We, Boughman Company, P.A.,  
 Sedgwick County } Surveyors in aforesaid county and state, do  
 hereby certify that we have surveyed and  
 platted "BLAHA ADDITION", Wichita, Kansas, and  
 that the accompanying plat is a true and  
 correct exhibit of the property surveyed,  
 described as beginning at a point 134.6 feet  
 east and 420 feet north of the SW corner  
 of the SE 1/4 of the NE 1/4 of Section 31, T26 S,  
 R1 E of the 6th P.M., Sedgwick County, Kansas;  
 thence easterly, parallel with the south line  
 of said NE 1/4, 175 feet; thence northerly, par-  
 allel with the west line of the SE 1/4 of said  
 NE 1/4, to the center of the Little Arkansas  
 River; thence northwesterly, along the center  
 of said River, to a point 134.6 feet east of  
 the west line of the SE 1/4 of said NE 1/4;  
 thence southerly, parallel with said west  
 line, to the point of beginning.

Date Aug 2, 1982 Boughman Company, P.A.  
John E. Lundblade Surveyor  
John E. Lundblade

Know all men by these presents, that we  
 the undersigned, have caused the land described  
 in the surveyors certificate to be platted into  
 lots and a street to be known as "BLAHA ADD-  
 ITION", Wichita, Kansas. The easements are hereby  
 granted as indicated for the construction and  
 maintenance of public utilities. The street is  
 hereby dedicated to and for the use of the  
 public. The drainage easement is hereby granted,  
 for drainage and riverbank maintenance purposes.  
 No structure shall be built within the drainage  
 easement, nor shall any change of grade be made  
 without the permission of the Wichita Valley  
 Center Flood Control Office or their successors  
 of office. No building shall be constructed  
 below Elev. 127.0 (city datum)

Joseph R. Blaha Barbara L. Blaha

This plat of "BLAHA ADDITION", Wichita, Kansas,  
 has been submitted to and approved by the Wichita-  
 Sedgwick County Metropolitan Area Planning Com-  
 mission, Wichita, Kansas, Dated this \_\_\_ day of  
 \_\_\_, 1982.

Wichita-Sedgwick County Metropolitan Area  
 Planning Commission

\_\_\_\_\_  
 David Baylath Chairman

\_\_\_\_\_  
 Robert A. Larkin Secretary

This plat approved and all dedications shown  
 hereon accepted by the Board of City Commis-  
 sioners, Wichita, Kansas, this \_\_\_ day of \_\_\_, 1982.

\_\_\_\_\_  
 Albert J. Kirk Mayor

\_\_\_\_\_  
 Donald C. Blach City Clerk

This plat approved and all dedications shown  
 hereon accepted by the Board of County Commis-  
 sioners, Sedgwick County, Kansas, this \_\_\_ day of  
 \_\_\_, 1982.

\_\_\_\_\_  
 Jack Spratt Chairman

\_\_\_\_\_  
 Tom Scott Commissioner

\_\_\_\_\_  
 Donald E. Bragg Commissioner

\_\_\_\_\_  
 Dorothy K. White County Clerk

Entered on transfer record this \_\_\_ day of  
 \_\_\_, 1982.

\_\_\_\_\_  
 Dorothy K. White County Clerk

State of Kansas } S.S. This is to certify that this  
 Sedgwick County } plat has been filed for record in the Office of  
 the Register of Deeds this \_\_\_ day of \_\_\_,  
 1982, at \_\_\_ o'clock, \_\_\_ M., and is duly recorded.

\_\_\_\_\_  
 Della K. McCarr Register of Deeds

\_\_\_\_\_  
 Pat Kettler Deputy

State of Kansas } S.S. The foregoing instrument was  
 Sedgwick County } acknowledged before me this \_\_\_ day of \_\_\_,  
 1982, by Joseph R. Blaha and Barbara L. Blaha,  
 his wife.

\_\_\_\_\_  
 Notary Public

My Commission Expires \_\_\_\_\_