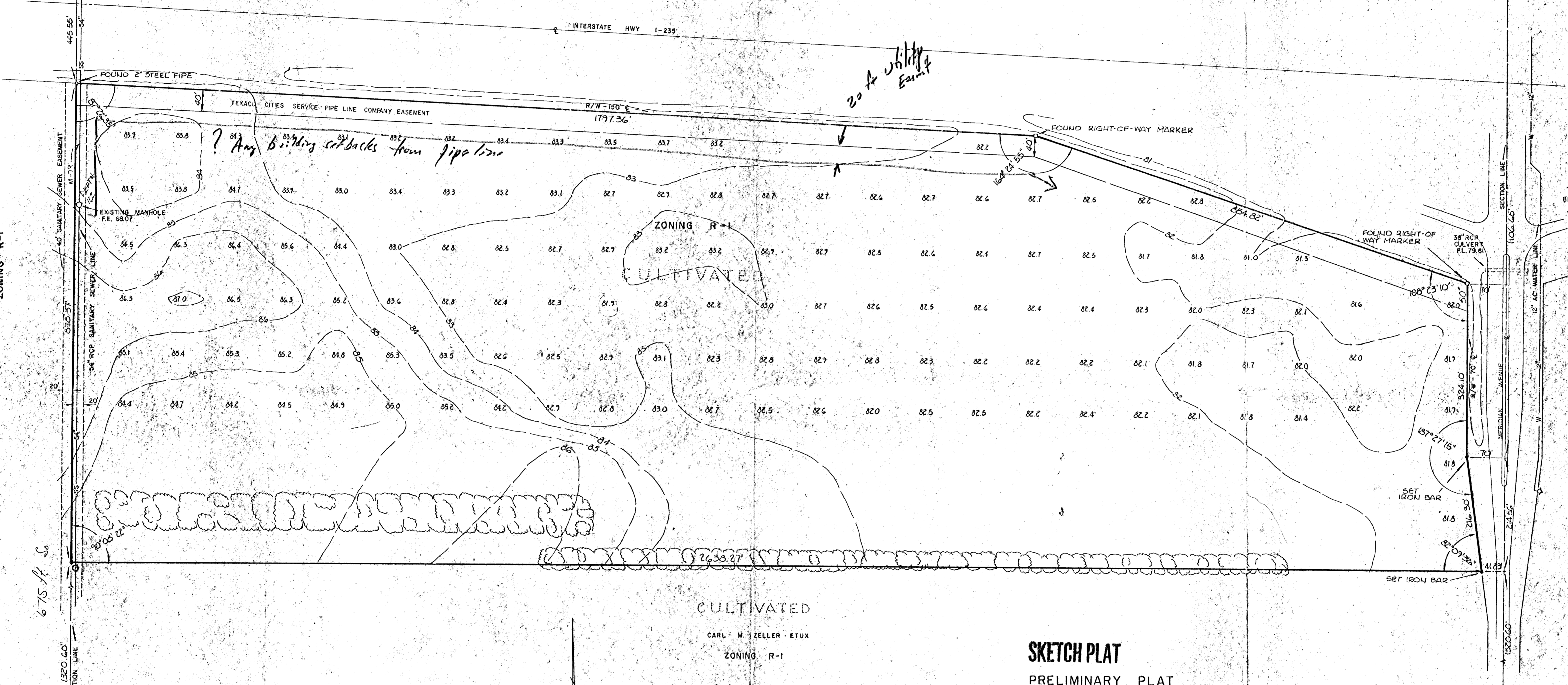


LOCATION MAP  
SCALE: 1" = 4000'

NW CORNER SE 1/4  
SECTION 12, T28S  
R1W, SEDGWICK  
COUNTY, KS.

NE CORNER SE 1/4  
SECTION 12, T28S  
R1W, SEDGWICK  
COUNTY, KS  
(FOUND IRON  
BAR IN THIMBLE)

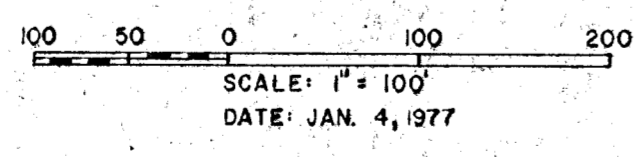


CULTIVATED  
ALFRED. F. MARK ETUX  
ZONING R-1

AERO  
ADDITION  
ZONING R-1

SW CORNER SE 1/4  
SECTION 12, T28S  
R1W, SEDGWICK  
COUNTY, KS  
(FOUND IRON  
BAR IN THIMBLE)

SE CORNER SE 1/4  
SECTION 12, T28S  
R1W, SEDGWICK  
COUNTY, KS  
(FOUND IRON  
BAR IN THIMBLE)



CULTIVATED  
CARL M. ZELLER - ETUX  
ZONING R-1

**SKETCH PLAT**  
PRELIMINARY PLAT  
OF  
**BETHEL ASSEMBLY ADDITION**

OWNER: BETHEL ASSEMBLY OF GOD CHURCH - WICHITA, KS.  
SUBDIVIDER: BETHEL ASSEMBLY OF GOD CHURCH - WICHITA, KS.  
ENGINEER: POE & ASSOCIATES, INC. - WICHITA, KS.  
DATE OF TOPOGRAPHIC SURVEY: 22 DECEMBER, 1976