

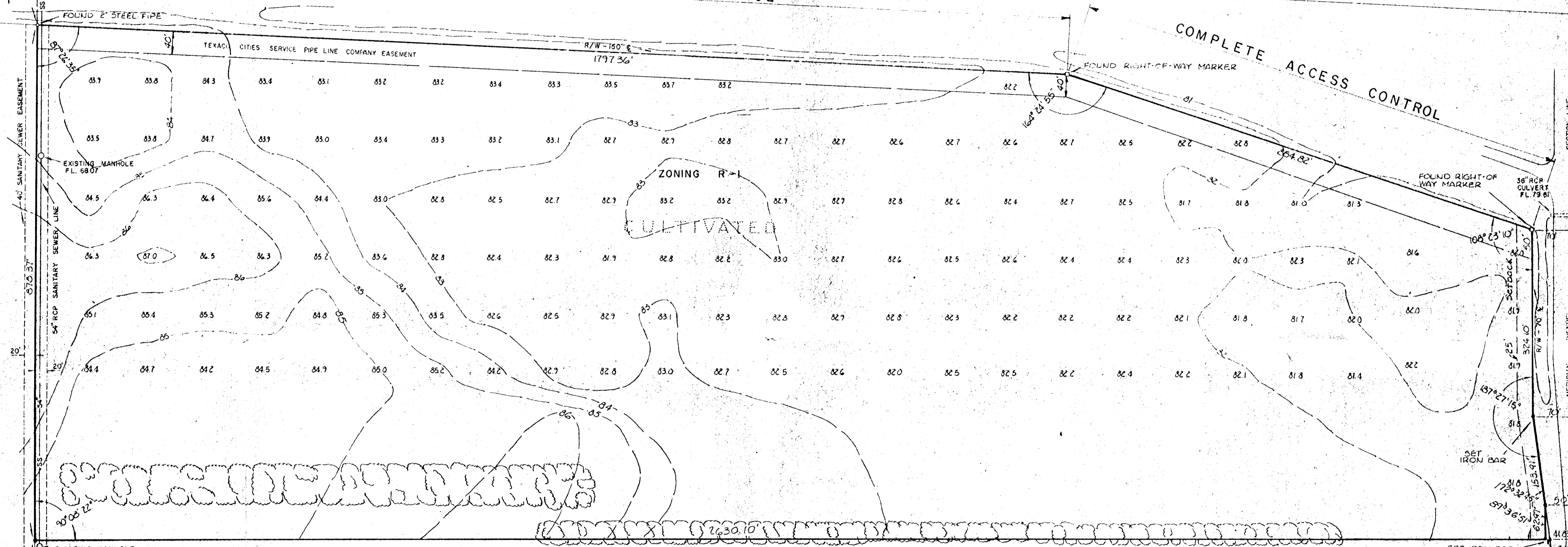
LOCATION MAP  
SCALE: 1" = 400'

NW CORNER SE 1/4  
SECTION 12, T28S  
R1W, SEDGWICK  
COUNTY, KS.

NE CORNER SE 1/4  
SECTION 12, T28S  
R1W, SEDGWICK  
COUNTY, KS.  
(FOUND IRON  
BAR IN THIMBLE)

COMPLETE ACCESS CONTROL

COMPLETE ACCESS CONTROL



CULTIVATED  
ALFRED E. MARK ETUX  
ZONING R-1

ZONING R-1  
CULTIVATED

COMPLETE ACCESS CONTROL  
AERO  
ADDITION  
ZONING R-1

EXISTING MANHOLE  
FL. 67.73

SET IRON BAR

CULTIVATED  
CARL M. ZELLER ETUX  
ZONING R-1

PRELIMINARY PLAT  
OF  
**BETHEL ASSEMBLY ADDITION**

OWNER: BETHEL ASSEMBLY OF GOD CHURCH - WICHITA, KS.  
SUBDIVIDER: BETHEL ASSEMBLY OF GOD CHURCH - WICHITA, KS.  
ENGINEER: POE & ASSOCIATES, INC. - WICHITA, KS.  
DATE OF TOPOGRAPHIC SURVEY: 22 DECEMBER, 1976

SW CORNER SE 1/4  
SECTION 12, T28S  
R1W, SEDGWICK  
COUNTY, KS.  
(FOUND IRON  
BAR IN THIMBLE)

SE CORNER SE 1/4  
SECTION 12, T28S  
R1W, SEDGWICK  
COUNTY, KS.  
(FOUND IRON  
BAR IN THIMBLE)

