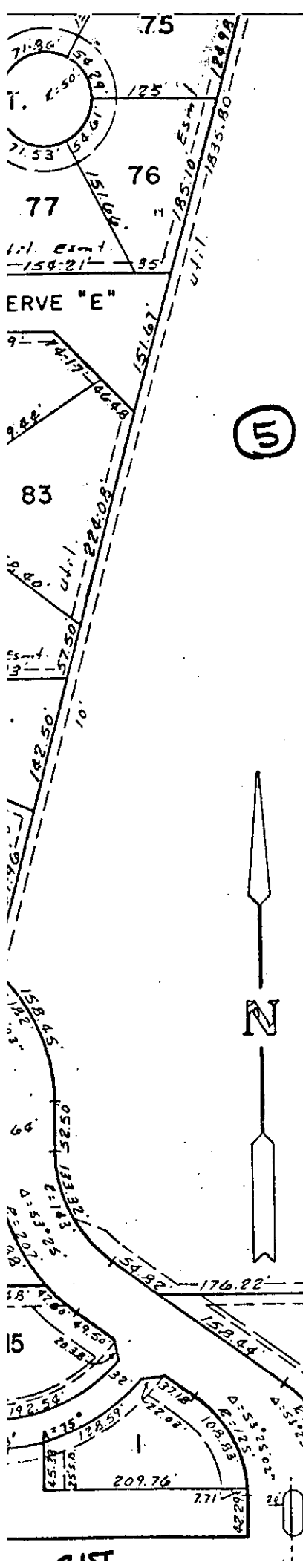


PRIMARY PLAT 38' x 60' STORM WATER SEWER #180 BOOK # C-135

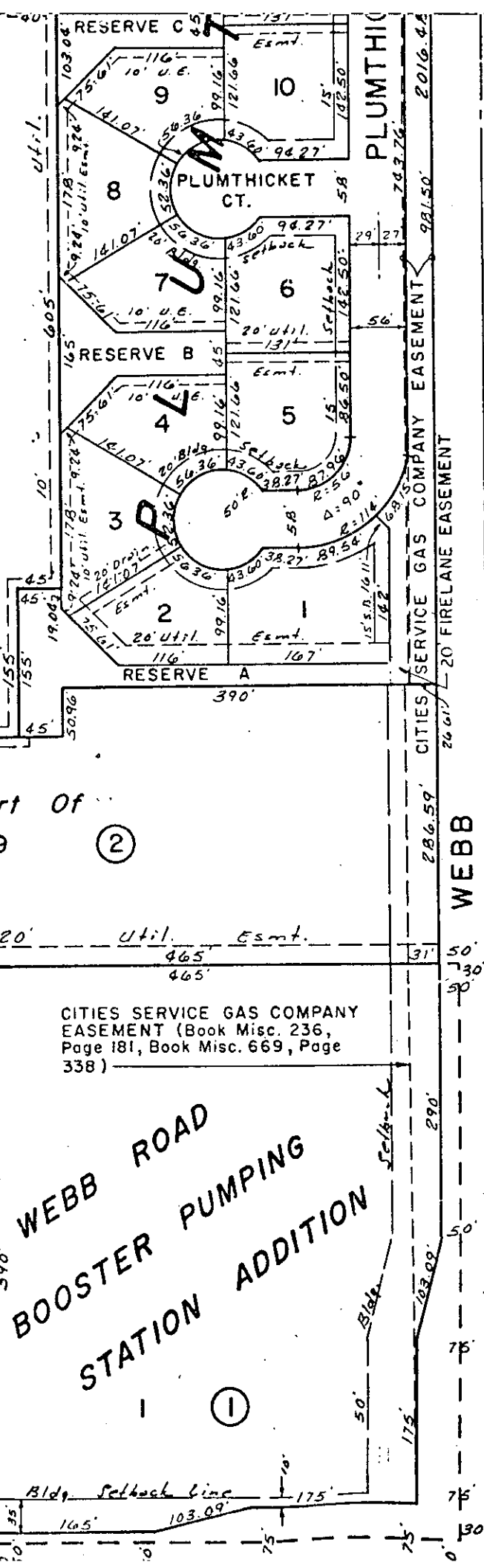
NOTE: SEE TALLGRASS C.O.P. D.P. FOR SETBACK RESERVES 'C', 'D' & 'E' TO PERMIT UTILITY DRAINAGE, PEDESTRIAN WALKWAYS, LANDSCAPE IRRIGATION SYSTEMS. RESERVES 'A' & 'B' TO PERMIT LANDSCAPING. 8" M. I. SIP 50% WEST FACE POWER POLE IN S.E. 1/4 SEC. 6, T26S, R7E 76.0' WEST OF L.E.V. 229.85'

BENT TREE



8
~~4-14-83~~
 SEE ATTACHED SHEET

RESERVE "C"
5 JULY 7, 1983



Part Of
 89 2

CITIES SERVICE GAS COMPANY
 EASEMENT (Book Misc. 236,
 Page 181, Book Misc. 669, Page
 338)

WEBB ROAD
 BOOSTER PUMPING
 STATION ADDITION

1

PLUMTHICKET

CITIES SERVICE GAS COMPANY EASEMENT

20' FIRELANE EASEMENT

WEBB

2016.48

981.50

709.76

286.59

260.17

290

50

50

75

75

130